

# FORD CORTINA TC TD TE & TF (Mk 3-5)

## New Parts Price List

**YESTERFORD Pty Ltd**

### English Small Ford Specialist

Anglia - Capri - Cortina - Escort - Prefect - Thames - Zephyr



This catalogue supersedes all lists prior to **17 June 2026**  
*The most up to date version of this catalogue is on our web site*

**[www.yesterford.com](http://www.yesterford.com)**

*Some parts in this catalogue are imported from overseas, and prices may change due to the fluctuating currency exchange rate and changing supplier & freight costs.*

*If you are emailing an inquiry, please include :*

**Your details :** Name, Phone Number & Postcode (& Country if outside Australia) for delivery.

**Vehicle details** relevant to inquiry : Model, Year, Engine Size, Body Type (eg. 2 door, 4 door, Ute), Transmission, etc

1/21 Burgess Road  
Bayswater North  
VICTORIA 3153  
AUSTRALIA  
Ph: 03 9761 4714  
International Ph: +61 3 9761 4714  
Email: [sales@yesterford.com](mailto:sales@yesterford.com)

### Opening Hours

Monday – Thursday : 9am – 5pm  
Friday : 9am – 4:30pm  
Saturday : By appointment  
Sunday & Public Holidays : CLOSED

# Engine Gaskets & Seals

2.0L - 4 Cylinder parts only are in stock.

Part Description	Unit	\$
Gasket Set - Full Engine	each	\$145.00
Gasket Set - Top Engine (VRS)	each	\$85.00
Gasket Set - Top Engine (VRS) – Felpro Head Gasket	each	\$135.00
Gasket Set - Bottom Engine	each	\$65.00
Gasket - Cylinder Head	each	\$25.00
Gasket - Cylinder Head - Felpro	each	\$75.00
Gasket - Rocker Cover – Cork	each	\$15.00
Gasket - Rocker Cover – Rubber	each	\$32.00
Gasket - Rocker Cover – Cork - Late Wide Type	each	\$15.00
Gasket - Rocker Cover – Rubber - Late Wide Type	each	\$32.00
Gasket - Inlet Manifold	each	\$10.00
Gasket - Exhaust Manifold	set	\$10.00
Gasket - Exhaust Extractor	each	\$20.00
Gasket – Sump **	each	\$25.00
Gasket - Water Pump	each	\$6.00
Gasket - Thermostat Housing	each	\$4.00
Gasket - Front Timing Case	each	\$5.00
Gasket - Rear Cover	each	—
Gasket - Oil Pump	each	—
Gasket - Fuel Pump	each	\$3.00
Seal - Crankshaft Front	each	\$12.00
Seal - Crankshaft Rear	each	\$22.00
Seal - Camshaft	each	\$12.00
Seal - Valve Stem	set	\$15.00
Seal – Aux Shaft	each	\$12.00
“O” Ring - Oil Pump	each	—
“O” Ring - Distributor	each	—
Sump Plug Washer	each	\$2.00

# Engine Components & Accessories

4 Cylinder parts only in stock. 6 Cylinder may be available to order. Please enquire.

Part Description	Unit	\$
Piston & Rings - Most Sizes	set	\$495.00
Piston Rings <b>NOTE#</b>	set	\$230.00
Bearing – Conrod / Big End	set	\$65.00
Bearing - Mains - All Sizes	set	\$65.00
Bearing - Crankshaft Thrust Washers STD	set	\$25.00
Bearing - Crankshaft Thrust Washers 005	set	\$35.00
Bearing - Camshaft	set	\$45.00
Bearing - Aux-Shaft	each	\$55.00
Bearing - Crankshaft Spigot	each	\$25.00
Timing Chain/Belt	each	\$30.00
Grommet - Cam Belt Cover	set 3	\$6.00
Timing Chain/Belt Tensioner	each	\$75.00
Timing Belt Guide Plate - Crankshaft	each	\$19.50
Timing Belt Kit Belt, Tensioner & 3 Oil Seals	each	\$135.00
Camshaft – Mild Road – NEW <a href="#">SEE SPECS</a>	each	\$650.00
Camshaft – Fast Road – NEW <a href="#">SEE SPECS</a>	each	\$650.00
Camshaft Kit STD (incl Camshaft & Followers & Spray Bar)	each	\$350.00
Camshaft Followers	Set 8	\$96.00
Camshaft Follower Retaining Spring - Standard	Set 8	\$48.00
Camshaft Follower Retaining Spring - Heavy Duty	Set 8	\$60.00
Camshaft Spray Bar	each	\$35.00
Camshaft Sprocket - Adjustable	each	\$275.00
Camshaft Retaining Plate	each	\$30.00

**\*\* Piston Rings** - Some 2.0L pistons have 1.6 + 2.0 compression rings, and some have 2.0 + 2.5 **\*\* Please advise bore size and compression ring size you require when ordering**

Crankshaft Sprocket	each	\$110.00
Engine Front Seal Housing	each	\$125.00
Valves - Inlet	each	\$25.00
Valves - Exhaust	each	\$25.00
Valve Springs - Heavy Duty	set	\$80.00
Valve Spring Retaining Caps	set	\$160.00
Valve Spring Retaining Cotters (3 Groove Type)	set	\$80.00
Ring Gear - Flywheel	each	\$125.00
Flywheel Bolt Set (6 Bolts)	set	\$20.00
Oil Pump	each	\$95.00
Oil Pump - High Volume	each	\$185.00
Drive Shaft - Oil Pump	each	\$25.00
Oil Pressure Switch	each	\$15.00
Oil Filler Cap (Plastic) – No Pipe	each	\$15.00
Oil Filler Cap (Plastic) – With Pipe	each	\$19.50
Oil Filler Cap (Alloy) – No Pipe	each	\$75.00
Oil Filler Cap (Alloy) – With Pipe	each	\$95.00
Sump Plug (includes washer)	each	\$8.00
Dipstick & Tube	each	\$95.00
PCV Valve	each	\$18.00
Rubber Seal for PCV Valve	each	\$18.00
Cam Belt Tensioner Tool	each	\$22.50
Cylinder Head Bolt Tool (Suits Original Head Bolts)	each	\$25.00
Head Bolt Set (2.0L)	each	\$75.00
<b>Engine Mounts</b>		
TC TD TE TF - 4 Cyl. - TC TD Six Cylinder - Round	each	\$45.00

**200 & 250 Six Cylinder Engine Parts Available to Order**

# Accelerator Cables, Carbie Kits, Fuel Pumps, Caps & Sports Air Cleaners

<b>Accelerator Cables</b>	<b>Unit</b>	<b>TC/TD</b>	<b>TE/TF</b>
Accelerator Cable - 2000	each	\$175.00	\$175.00
Accelerator Cable - 6 Cyl	each	\$175.00	\$175.00

## **Carburetor**

Overhaul Kit - 1600	each	\$95.00	—
Overhaul Kit - 2000	each	\$115.00	\$115.00

## **Fuel Pumps**

1600 (includes gasket)	each	\$95.00	—
2000 (includes gasket)	each	\$95.00	\$95.00
Fuel Pump Kit – 6 Cyl - <i>Suits Glass Bowl Type Pump ONLY</i>	each	\$95.00	\$95.00
Fuel Pump Spacer	each	\$18.00	\$18.00
Fuel Pump Blanking Plate	each	\$15.00	\$15.00
Gasket - Fuel Pump	each	\$3.00	\$3.00
Fuel Filter	each	\$6.00	\$6.00

## **Chrome Rectangular Sports Air Cleaners**

Cortina 2000	each	\$65.00	\$65.00
Replacement Filter	each	\$25.00	\$25.00

## **Fuel Caps**

Cortina TC TD TE TF Locking	each	\$38.50	\$38.50
Cortina TC TD TE TF Non-Locking	each	\$25.00	\$25.00

## Exhaust

	Unit	\$
Exhaust Extractors	each	\$495.00
Extractor Gasket	each	\$20.00
Inlet Manifold Bolt/Stud Set	set	\$25.00
Exhaust Manifold Stud Set	set	\$35.00
Exhaust Manifold to Pipe Studs	pair	\$10.00
Exhaust Hanger Rings	each	\$5.00

## Tune Up & Service

Part Description	Unit	\$
Spark Plugs	set	\$24.00
Spark Plug Leads	set	\$45.00
Spark Plug Lead Separator Block	each	\$15.00
Contact Points - Lucas Distributor	each	\$12.00
Contact Points - Motorcraft/Fomoco Distributor	each	\$12.00
Contact Points - Bosch Distributor	each	\$12.00
Rotor Button - Lucas Distributor	each	\$25.00
Rotor Button - Motorcraft/Fomoco Distributor	each	\$12.00
Rotor Button - Bosch Distributor	each	\$25.00
Condenser - Lucas Distributor	each	\$12.00
Condenser - Motorcraft/Fomoco Distributor	each	\$18.00
Condenser - Bosch Distributor	each	\$25.00
Distributor Cap - Lucas Distributor	each	\$55.00
Distributor Cap - Motorcraft/Fomoco Distributor	each	\$35.00
Distributor Cap - Bosch Distributor	each	\$35.00
Distributor Cap - Bosch Distributor – Side Entry	each	\$55.00
Distributor - Bosch - Points Type - New	each	\$185.00
Distributor - Bosch - Electronic Type - New	each	\$275.00
Electronic Ignition Kit – Motorcraft/Fomoco	each	\$115.00
Electronic Ignition Kit - Bosch	each	\$125.00
Ignition Coil	each	\$65.00

<b>Part Description</b>	<b>Unit</b>	<b>\$</b>
Filter - Oil	each	\$15.00
Filter - Oil - Budget	each	\$10.00
Filter – Air (TC – TE)	each	\$18.00
Filter – Air (TF)	each	\$25.00
Filter – Fuel - Plastic	each	\$6.00
Filter – Fuel - Metal	each	\$18.50
Wiper Blade Assembly - Stainless Steel	each	\$45.00
Wiper Blade assembly - Black	each	\$25.00
Wiper Arm	each	\$55.00

## **Cooling System**

<b>Part Description</b>	<b>Unit</b>	<b>\$</b>
Water Pump (includes gasket)	each	\$75.00
Gasket - Water Pump	each	\$4.00
Thermostat	each	\$15.00
Thermostat Housing ^^ (includes gasket)	each	\$135.00
Gasket - Thermostat Housing	each	\$4.00
Seal - Rubber - Thermostat Housing	each	\$5.00
Clip - Thermostat Housing	each	\$5.00
Thermostat Housing Kit - Gasket, Rubber Seal & Clip	each	\$15.00
Radiator Hose - Top	each	\$12.00
Radiator Hose - Bottom	each	\$15.00
Radiator Cap	each	\$12.00
Radiator – NEW (4 Cyl only)	each	\$550.00
Fan Belt	each	\$12.00
Temp. Sender Unit	each	\$29.50
Engine Fan	each	\$110.00
Welsh Plug – Brass – Block Side, Rear & Head	each	\$5.00

**^^ For the 2.0L – we can only supply the EARLY type thermostat housing. These have NO threaded hole for pollution fitting.**

# Transmission

Part Description	Unit	TC	TD	TE	TF
Gearbox Mount - Manual & Auto 4 Cyl.	each	\$75.00	\$75.00	\$75.00	\$75.00
Gearbox Mount - Manual & Auto 6 Cyl.	each	\$35.00	\$35.00	\$35.00	\$35.00
Seal - Front Input Shaft	each	\$15.00	\$15.00	\$15.00	\$15.00
Seal - Extension Housing	each	\$15.00	\$15.00	\$15.00	\$15.00
Seal - Speedo Drive	each	\$8.00	\$8.00	\$8.00	\$8.00
Speedo Gear Plug	each	\$29.50	\$29.50	\$29.50	\$29.50
Bearing - Front	each	\$35.00	\$35.00	\$35.00	\$35.00
Bearing – Main Shaft	each	\$95.00	\$95.00	\$95.00	\$95.00
Bearing - Rear	each	\$35.00	\$35.00	\$35.00	\$35.00
Synchro Rings	each	\$75.00	\$75.00	\$75.00	\$75.00
Layshaft Rollers	set	\$70.00	\$70.00	\$70.00	\$70.00
Thrust Washers - Cluster Gear	pair	\$25.00	\$25.00	\$25.00	\$25.00
Extension Housing Rear Bush	each	\$95.00	\$95.00	\$95.00	\$95.00
Gasket Set - 4 Cyl. Manual Gearbox - 4 speed	set	\$25.00	\$25.00	\$25.00	\$25.00
Gasket Set - 4 Cyl. Manual Gearbox - 5 speed	set	\$45.00	\$45.00	\$45.00	\$45.00
Gear Lever to Selector Shaft Saddle - 4 speed (Plastic)	each	\$5.00	\$5.00	\$5.00	\$5.00
Gear Lever to Selector Shaft Saddle - 5 speed (Plastic)	each	\$15.00	\$15.00	\$15.00	\$15.00
Gear Lever to Selector Shaft Saddle - 5 speed (Brass)	each	\$25.00	\$25.00	\$25.00	\$25.00
Gear Lever - New - Quick Shift - 4 or 5 Speed	each	\$125.00	\$125.00	\$125.00	\$125.00
Gear Lever – New – 4 Speed – Original Style '73 - <a href="#">PHOTO</a>	each	\$245.00	\$245.00	\$245.00	\$245.00
Gear Lever * <a href="#">Reconditioned / Change Over</a> – 4 Speed	C/O(2)	\$145.00	\$145.00	\$145.00	\$145.00
Gear Lever Repair Kit – 4 Speed <a href="#">PHOTO</a>	each	\$110.00	\$110.00	\$110.00	\$110.00
Gear Lever Knob – Original Style <a href="#">PHOTO</a> . <i>Please refer to attached photo and advise which style you require</i>	each	\$65.00	\$65.00	\$65.00	\$65.00
Gear Lever Knob – After Market Type	each	\$19.50	\$19.50	\$19.50	\$19.50

Part Description	Unit	TC	TD	TE	TF
Tailshaft Centre Bearing - 2 Piece Shaft	each	\$25.00	\$25.00	\$25.00	\$25.00
Tailshaft Centre Bearing - 2 Piece Shaft – WITH End Caps	each	\$45.00	\$45.00	\$45.00	\$45.00
Tailshaft Centre Bearing Support	each	\$45.00	\$45.00	\$45.00	\$45.00
Universal Joint - Tailshaft	each	\$35.00	\$35.00	\$35.00	\$35.00
Reverse Light Switch - 4 Cyl Manual	each	\$45.00	\$45.00	\$45.00	\$45.00
Inhibitor Switch - 4 Cyl BW35 Auto	each	\$75.00	—	—	—
Drive Plate - BW35 Auto	each	\$55.00	\$55.00	—	—
Drive Plate - C3 Auto <b>*Reconditioned / Change Over</b>	C/O(3)	—	\$250.00	\$250.00	\$250.00
Seal - Front - B/W 35 Auto	each	\$15.00	\$35.00	\$35.00	\$35.00
Seal - Front - C3 Auto	each	—	\$45.00	\$45.00	\$45.00
Seal - Extension Housing - C3 Auto	each	—	\$35.00	\$35.00	\$35.00
Auto Pan Gasket & Filter Kit - BW 35 & C3	each	\$15.00	\$15.00	\$15.00	\$15.00

## Starter Motor & Alternator

Part Description	Unit	\$
Starter Motor - New	each	—
Starter Motor - New - High Torque	each	\$695.00
Starter Motor - Pinion	each	—
Alternator – New Lucas 18ACR (45 Amp)	each	\$325.00
Alternator Mount - Bush Repair Kit (includes Bushes & Bolts)	each	\$45.00
Alternator Adjusting Bracket	each	\$25.00

### \*Reconditioned / Change Over

Items available as **\*Reconditioned / Change Over** require a change over unit from the customer.

A deposit will be charged for all Change Over units when core units are not supplied at the time of purchase.

All deposits are refunded when the change over unit is received from the customer (we appreciate prompt return of change over units).

Deposit required : C/O(2) = \$30.00, C/O(3) = \$50.00, C/O(4) = \$100.00

# Speedo Cables

**Check the speedo has not seized BEFORE fitting a new speedo cable**

Part Description	Unit	TC	TD	TE	TF
Speedo Cable - Manual - 4 Cyl.	each	\$65.00	\$65.00	\$65.00	\$65.00
Speedo Cable - Auto - BW35 - 4 Cyl.	each	\$65.00	\$65.00	—	—
Speedo Cable - Auto - C3 - 4 Cyl.	each	—	\$65.00	\$65.00	\$65.00
Speedo Cable - Auto & Man - 6 Cyl.	each	\$65.00	\$65.00	\$65.00	\$65.00
Speedo Cable Circlip - Manual - 4 Cyl.	each	\$2.00	\$2.00	\$2.00	\$2.00
Speedo Gear Plug	each	\$29.50	\$29.50	\$29.50	\$29.50

# Brake

Part Description	Unit	TC	TD	TE	TF
Brake Disc – TC (1971-72)	each	\$115.00	—	—	—
Brake Disc – TC/TD (1972-77)	each	\$115.00	\$115.00	—	—
Brake Disc – TE/TF	each	—	—	\$65.00	\$65.00
Brake Disc Pads (set of 4 pads)	set	\$55.00	\$55.00	\$45.00	\$45.00
Brake Disc Pad Fitting Kit	each	\$25.00	\$25.00	—	—
Brake Disc to Hub Lock Tab	Set 4	\$20.00	\$20.00	—	—
Brake Caliper Kit	each	\$25.00	\$25.00	\$25.00	\$25.00
Brake Caliper Piston	each	\$45.00	\$45.00	\$30.00	\$30.00
Brake Caliper – New (Includes Disc Pad Fitting Kit)	pair	\$395.00	\$395.00	—	—
Brake Caliper <b>*Reconditioned / Change Over</b>	pair C/O(4)	\$395.00	\$395.00	\$395.00	\$395.00
Brake Caliper Spacer Kit - 1 kit per car (Used to fit vented discs to existing calipers)	kit	\$95.00	\$95.00	—	—
Brake Caliper Mounting Bolt Lock Tab	pair	\$10.00	\$10.00	—	—
Brake Shoes (set of 4 shoes) <b>*Reconditioned / Change Over</b>	set C/O(3)	\$65.00	\$65.00	\$65.00	\$65.00

### **\*Reconditioned / Change Over**

Items available as **\*Reconditioned / Change Over** require a change over unit from the customer.  
 A deposit will be charged for all Change Over units when core units are not supplied at the time of purchase.  
 All deposits are refunded when the change over unit is received from the customer (we appreciate prompt return of change over units).  
 Deposit required : C/O(2) = \$30.00, C/O(3) = \$50.00, C/O(4) = \$100.00

Part Description	Unit	TC	TD	TE	TF
Brake Drum ( <i>Does <b>NOT</b> Fit 6 Cyl Station Wagon</i> )	each	\$145.00	\$145.00	—	—
Brake Hose – Front – TC – 422mm Long <i>Please check hose length before ordering</i>	each	\$75.00	—	—	—
Brake Hose – Front – TD – 539mm Long <i>Please check hose length before ordering</i>	each	—	\$75.00	—	—
Brake Hose – Rear	each	\$75.00	\$75.00	—	—
Brake Master Cylinder Repair Kit	each	\$85.00	\$85.00	\$85.00	\$55.00
Brake Wheel Cylinders	each	\$30.00	\$30.00	\$30.00	\$30.00
Brake Pedal Pad - Manual	each	\$9.50	\$9.50	\$9.50	\$9.50
Brake Pedal Pad - Auto 8/72 on	each	\$25.00	\$25.00	\$25.00	\$25.00
Switch - Brake Stop Light	each	\$21.50	\$21.50	\$21.50	\$21.50

## Clutch

Part Description	Unit	TC	TD	TE	TF
Clutch Cable 4 Cyl.	each	\$165.00	\$165.00	\$165.00	\$165.00
Clutch Cable 6 Cyl.	each	\$165.00	\$165.00	\$165.00	\$165.00
Clutch Kit - 2000 - New <i>Spacer &amp; Long Bolt are NOT required Kit includes Spigot Bearing &amp; Alignment Tool</i>	each	\$295.00	\$295.00	\$295.00	\$295.00
Clutch Driven Plate - 2000	each	\$125.00	\$125.00	\$125.00	\$125.00
Clutch Release Bearing – 2000	each	\$35.00	\$35.00	\$35.00	\$35.00
Clutch Release Bearing - English 2000 Clutch	each	\$75.00	\$75.00	\$75.00	\$75.00
Clutch Release Lever Pivot Spacer & Bolt - 2.0L <i>Not Needed if Using English 2.0L Clutch</i>	each	\$25.00	\$25.00	\$25.00	\$25.00
Clutch Pedal Pad	each	\$9.50	\$9.50	\$9.50	\$9.50
Bearing - Crank Spigot	each	\$25.00	\$25.00	\$25.00	\$25.00
Bush - Clutch Cable to Bell Housing	each	\$10.00	\$10.00	\$10.00	\$10.00

### \*Reconditioned / Change Over

Items available as **\*Reconditioned / Change Over** require a change over unit from the customer.

A deposit will be charged for all Change Over units when core units are not supplied at the time of purchase.

All deposits are refunded when the change over unit is received from the customer (we appreciate prompt return of change over units).

Deposit required : C/O(2) = \$30.00, C/O(3) = \$50.00, C/O(4) = \$100.00

## Suspension and Steering

Part Description	Unit	TC	TD	TE	TF
FRONT Shockers – GAZ Adjustable	pair	\$395.00	\$395.00	—	—
FRONT Shockers – Gas	pair	\$175.00	\$175.00	—	—
REAR Shockers – GAZ Adjustable	pair	\$395.00	\$395.00	—	—
REAR Shockers – Gas	pair	\$175.00	\$175.00	\$195.00	\$195.00
Ball Joint – Upper (Includes Boot)	each	\$85.00	\$85.00	\$55.00	\$55.00
Ball Joint – Lower (Includes Boot)	each	\$55.00	\$55.00	\$65.00	\$65.00
Tie Rod End – Outer (Includes Boot)	each	\$25.00	\$25.00	\$25.00	\$25.00
Boot - Tie Rod End	pair	\$12.00	\$12.00	\$12.00	\$12.00
Steering Rack Ends (Tie Rod)	each	\$55.00	\$55.00	\$55.00	\$55.00
Steering Rack Boots	pair	\$65.00	\$65.00	\$65.00	\$65.00
Steering Rack Internal Bush	each	\$18.00	\$18.00	\$25.00	\$25.00
Steering Rack Mount Bush	kit	\$39.50	\$39.50	\$30.00	\$30.00
Steering Coupling – Urethane <i>*Reconditioned / Change Over</i>	C/O(2)	—	—	\$90.00	\$90.00
Steering Coupling Repair Kit – Urethane <i>NOTE: Coupling Kits For Flexible End Only</i>	each	\$65.00	\$65.00	\$65.00	\$65.00

## Front and Rear Axle

Part Description	Unit	TC	TD	TE	TF
Bearing & Seal Kit - Front Hub (One Wheel Set)	each	\$49.50	\$49.50	\$49.50	\$49.50
Seal - Front Hub	each	\$10.00	\$10.00	\$10.00	\$10.00
Bearing - Rear Axle	each	\$65.00	\$65.00	\$65.00	\$65.00
Seal - Rear Axle	each	\$15.00	\$15.00	\$15.00	\$15.00
Seal - Diff Pinion	each	\$15.00	\$15.00	\$15.00	\$15.00
Gasket - BW Diff	each	\$10.00	\$10.00	\$10.00	\$10.00
Tail Shaft to Diff Bolt Set <i>Suits models with threaded diff flange</i>	set	\$10.00	\$10.00	\$10.00	\$10.00
Wheel Nuts – STD (Set of 16)	set	\$30.00	\$30.00	\$30.00	\$30.00

# Urethane Suspension Bush Kits

## Front End

	<b>Kits Required</b>	<b>TC</b>	<b>TD</b>	<b>TE</b>	<b>TF</b>
Sway Bar Mount (Check Size)	1	\$25.00	\$25.00	\$25.00	\$25.00
Sway Bar Link	1	\$25.00	\$25.00	\$25.00	\$25.00
Lower Control Arm – Inner	1	—	—	\$110.00	\$110.00
Lower Control Arm - Inner - 12mm. ID	1	\$65.00	\$65.00	—	—
Lower Control Arm - Inner - 14mm. ID	1	\$75.00	\$75.00	—	—
Upper Control Arm - Inner - 33mm OD. (12mm Bolt)	1	\$155.00	—	—	—
Upper Control Arm - Inner - 36mm OD. (14mm Bolt)	1	\$145.00	\$145.00	—	—
Upper Control Arm - Inner	1	—	—	\$140.00	\$140.00
Radius Rod	1	\$95.00	\$55.00	\$75.00	\$75.00
Crossmember to Chassis Mount - Front	1	—	\$95.00	—	—
Crossmember to Chassis Mount - Rear	1	—	\$95.00	—	—
Steering Coupling Repair Kit - Flexible End Only	1	\$65.00	\$65.00	\$65.00	\$65.00
Steering Rack Internal Bush	1	\$18.00	\$18.00	\$30.00	\$30.00
Steering Rack Mount	1	\$45.00	\$45.00	\$45.00	\$45.00

## Rear End


	<b>Kits Required</b>	<b>TC</b>	<b>TD</b>	<b>TE</b>	<b>TF</b>
Lower Arm - Front Eye - To 8/72	1	\$65.00	—	—	—
Lower Arm - Front Eye - From 8/72	1	\$65.00	\$65.00	\$65.00	\$65.00
Lower Arm - Rear Eye	1	\$65.00	\$65.00	\$65.00	\$65.00
Upper Arm - Front Eye	1	\$65.00	\$65.00	\$65.00	\$65.00
Upper Arm - Rear Eye	1	\$65.00	\$65.00	\$65.00	\$65.00
Shocker Mount - Top	1	\$12.00	\$12.00	\$12.00	\$12.00
Shocker Mount - Bottom	1	\$12.00	\$12.00	\$12.00	\$12.00

# Lighting & Electrical

Part Description	Unit	TC	TD	TE	TF
Head Light - Round 7" Sealed Beam	each	\$30.00	\$30.00	—	—
Head Light - Round 7" H4 - Flat Glass – With Park Lamp	each	\$30.00	\$30.00	—	—
Head Light - Round 5 3/4" High/Low Beam **	each	\$30.00	—	—	—
Head Light - Round 5 3/4" High Beam **	each	\$30.00	—	—	—
Head Light – LH ONLY	each	—	—	\$75.00	\$75.00
Head Light Wiring Plug	each	\$10.00	\$10.00	\$10.00	\$10.00
Front Indicator Lens – ORANGE	each	\$69.00	\$69.00	—	—
Front Indicator Lens – CLEAR	each	\$120.00	\$120.00	—	—
Front Indicator Assembly - LH ONLY - Aftermarket	each	—	—	\$30.00	—
Globe - Head Light - H4	each	\$10.00	\$10.00	\$10.00	\$10.00
Globe - Stop/Tail Light	each	\$3.00	\$3.00	\$3.00	\$3.00
Globe - Indicator	each	\$3.00	\$3.00	\$3.00	\$3.00
Globe - Indicator - Orange (For Clear Lens)	each	\$4.00	\$4.00	\$4.00	—
Globe - Park Light	each	\$2.00	\$2.00	\$2.00	\$2.00
Globe - Number Plate Light	each	\$2.00	\$2.00	\$2.00	\$2.00
Number Plate Light	each	—	—	\$60.00	—
Switch - Brake Stop Light	each	\$21.50	\$21.50	\$21.50	\$21.50
Indicator Flasher Can	each	\$20.00	\$20.00	\$20.00	\$20.00
PVC Wiring Harness Tape - Non Adhesive Black or Grey	each	\$15.00	\$15.00	\$15.00	\$15.00

**\*\* Available in sealed or semi-sealed beam. Supplied with globe.**

# Body Parts

Part Description	Unit	TC	TD	TE	TF
Panel - Lock Down Panel	each	—	—	\$95.00	—
Clip - Bonnet Stay (Please Specify if SIDE Entry or TOP Entry type is required)	each	\$5.00	\$5.00	\$5.00	\$5.00
Grommet - Bonnet Stay	each	\$5.00	\$5.00	\$5.00	\$5.00
Bonnet Release Handle	each	\$18.00	\$18.00	\$18.00	\$18.00
Door Mirrors - L & R 	each	\$175.00	\$175.00	\$175.00	—
Exterior Door Handle - Black or Chrome	each	—	—	\$30.00	\$30.00
Interior Door Handle Surrounds - Black	each	\$9.00	\$9.00	—	—
Interior Door Handle Surrounds - Chrome	each	\$10.50	\$10.50	—	—
Window Winder Handle Insert	each	\$15.00	\$15.00	—	—
Window Winder Handle Caps/Discs - Chrome	set 4	\$24.00	\$24.00	\$24.00	\$24.00
FORD Oval Grille Badge	each	—	—	\$55.00	\$55.00
Carpet Set – Includes Front & Rear Floors Please advise : Colour, Auto or Manual, 2 or 4 door. <a href="#">See HERE for Colours</a> – Please allow for difference caused by camera flash & individual device screens. Available in Plush or Loop.	set	\$320.00	\$320.00	\$320.00	\$320.00

# Rubber Seals & Weather Strips

Part Description	Unit	TC	TD	TE	TF
Seal - Windscreen – Front <b>**TC-TD Note1 below</b>	each	\$125.00	\$125.00	\$165.00	—
Seal - Windscreen – Rear - Sedan	each	\$125.00	\$125.00	\$185.00	—
Seal - Windscreen – Rear – Station Wagon	each	\$165.00	\$165.00	\$165.00	—
Chrome (Plastic) Locking Strip - Windscreen Seal - Front or Rear	each	\$35.00	\$35.00	\$35.00	\$35.00
Black Locking Strip – 11mm Wide – Incl Joiner - Windscreen Seal - Front or Rear	each	\$35.00	\$35.00	—	—
Seal - Door – Front / Rear	each	\$75.00	\$75.00	\$65.00	\$65.00
Seal - Door – MITERED - Front / Rear	each	\$75.00	\$75.00	\$65.00	—
Lower Door Seal Kit (1 Kit = 4 doors) <b>**TC-TD Note2 below</b>	kit	\$75.00	\$75.00	\$85.00	\$85.00
Weather Strip - Front Door Outer (Door Belt) (TD & TE includes clips)	each	NLA	\$55.00	\$65.00	\$35.00
Weather Strip - Front Door Inner (Door Belt)	each	\$42.50	\$42.50	\$45.00	\$45.00
Weather Strip - Rear Door Outer (Door Belt) (TD & TE includes clips)	each	NLA	\$55.00	\$65.00	\$35.00
Weather Strip - Rear Door Inner (Door Belt)	each	\$42.50	\$42.50	\$45.00	\$45.00
Bailey Channel (Glass Runner) – Front / Rear	each	\$39.50	\$39.50	\$39.50	\$39.50
Bailey Channel (Glass Runner) MITERED – Front / Rear	each	\$40.00	\$40.00	\$45.00	\$45.00
Seal - Boot Lid	each	\$55.00	\$55.00	\$55.00	\$55.00
Seal – Tail Gate to Body (WAGON ONLY)	each	\$65.00	\$65.00	\$65.00	\$65.00
Bonnet Bump Stops (Front Round Stops)	pair	\$15.00	\$15.00	\$15.00	\$15.00
Grommet - Bonnet Rod Retainer	each	\$5.00	\$5.00	\$5.00	\$5.00

**NOTE 1: TC-TD front windscreen rubbers.**

The front windscreen rubber we supply will only fit cars with the plastic chrome locking strip. It will **not** fit vehicles with XL-XLE chrome trims.

**NOTE2: For TC/TD Sedan & Wagon there are 2 different Lower Door Seal Kits**

“LONG” Lower Door Seal Kit – contains 4 pieces that are **all a similar length**

“SHORT” Lower Door Seal Kit – contains 4 pieces. **2 are long & 2 are short**

**Please advise which Kit you require**

Confused by the different  
rubber seals ?  
[See here for details](#)

# Rubber Seal Kits

Our Rubber Kits can be purchased as complete Kits, or we can customise a kit with only the parts you require.  
Please inquire / advise at time of ordering

<b>CORT5</b>	<b>Cortina TC - 4 Door</b>	<b>\$1105.00</b>
	<b>MITERED Bailey Channels</b> Option of <b>MITERED or Standard Door Seals</b>	
1	Front Windscreen Seal	
1	Rear Windscreen Seal	
2	Windscreen Locking Strips	
4	Door Seals	
1 <b>##NOTE</b>	Lower Door Seal Kit (Kit=4 doors)	
0	Door Belts OUTER ( <b>NOT AVAIL</b> )	
4	Door Belts INNER	
4	Bailey Channel	
1	Boot Seal	

<b>CORT7</b>	<b>Cortina TD - 4 Door</b>	<b>\$1330.00</b>
	<b>MITERED Bailey Channels</b> Option of <b>MITERED or Standard Door Seals</b>	
1	Front Windscreen Seal	
1	Rear Windscreen Seal	
2	Windscreen Locking Strips	
4	Door Seals	
1 <b>##NOTE</b>	Lower Door Seal Kit (Kit=4 doors)	
4	Door Belts OUTER (includes clips)	
4	Door Belts INNER	
4	Bailey Channel	
1	Boot Seal	

<b>CORT6</b>	<b>Cortina TC - Wagon</b>	<b>\$1160.00</b>
	<b>MITERED Bailey Channels</b> Option of <b>MITERED or Standard Door Seals</b>	
1	Front Windscreen Seal	
1	Rear Windscreen Seal	
2	Windscreen Locking Strips	
4	Door Seals	
1 <b>##NOTE</b>	Lower Door Seal Kit (Kit=4 doors)	
0	Door Belts OUTER ( <b>NOT AVAIL</b> )	
4	Door Belts INNER	
4	Bailey Channel	
1	Tail Gate to Body Seal	

<b>CORT8</b>	<b>Cortina TD - Wagon</b>	<b>\$1380.00</b>
	<b>MITERED Bailey Channels</b> Option of <b>MITERED or Standard Door Seals</b>	
1	Front Windscreen Seal	
1	Rear Windscreen Seal	
2	Windscreen Locking Strips	
4	Door Seals	
1 <b>##NOTE</b>	Lower Door Seal Kit (Kit=4 doors)	
4	Door Belts OUTER (includes clips)	
4	Door Belts INNER	
4	Bailey Channel	
1	Tail Gate to Body Seal	

**##NOTE:** For TC/TD Sedan & Wagon there are 2 different Lower Door Seal Kits  
 "LONG" Lower Door Seal Kit – contains 4 pieces that are all a similar length  
 "SHORT" Lower Door Seal Kit – contains 4 pieces. 2 are long & 2 are short  
 Please advise which Kit you require

Confused by the different rubber seals ?  
[See here for details](#)

**CORT9 Cortina TE - 4 Door \$1410.00**

**MITERED Bailey Channels**  
Option of  
**MITERED or Standard Door Seals**

- 1 Front Windscreen Seal
- 1 Rear Windscreen Seal
- 2 Windscreen Locking Strips
- 4 Door Seals
- 1 Lower Door Seal Kit (Kit=4 doors)
- 4 Door Belts OUTER (includes clips)
- 4 Door Belts INNER
- 4 Bailey Channel
- 1 Boot Seal

**CORT11 Cortina TF - 4 Door \$940**

**MITERED Bailey Channels**  
**Standard Door Seals**

- 0** Front Windscreen Seal (**NOT AVAIL**)
- 0** Rear Windscreen Seal (**NOT AVAIL**)
- 2 Windscreen Locking Strips
- 4 Door Seals
- 1 Lower Door Seal Kit (Kit=4 doors)
- 4 Door Belts OUTER
- 4 Door Belts INNER
- 4 Bailey Channel
- 1 Boot Seal

**CORT10 Cortina TE - Wagon \$1405.00**

**MITERED Bailey Channels**  
Option of  
**MITERED or Standard Door Seals**

- 1 Front Windscreen Seal
- 1 Rear Windscreen Seal
- 1 Windscreen Locking Strip - Front
- 1 Windscreen Locking Strip - Rear
- 4 Door Seals
- 1 Lower Door Seal Kit (Kit=4 doors)
- 4 Door Belts OUTER (includes clips)
- 4 Door Belts INNER
- 4 Bailey Channel
- 1 Tail Gate to Body Seal

**CORT12 Cortina TF - Wagon \$1130**

**MITERED Bailey Channels**  
**Standard Door Seals**

- 0** Front Windscreen Seal (**NOT AVAIL**)
- 1 Rear Windscreen Seal
- 1 Windscreen Locking Strip - Front
- 1 Windscreen Locking Strip - Rear
- 4 Door Seals
- 1 Lower Door Seal Kit (Kit=4 doors)
- 4 Door Belts OUTER
- 4 Door Belts INNER
- 4 Bailey Channel
- 1 Tail Gate to Body Seal

*Our Rubber Kits can be purchased as complete Kits, or we can customise a kit with only the parts you require.*

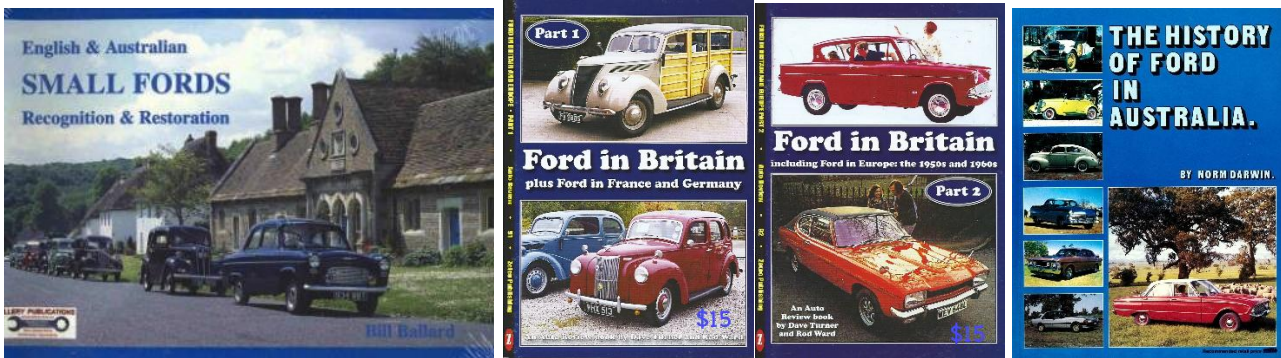
*Please inquire / advise at time of ordering*

Confused by the different rubber seals ?

[See here for details](#)

# Books

Book - English & Australian Small Fords Recognition & Restoration By Bill Billard	each	\$25.00
Book – Ford Popular and the Small Side Valves / By Dave Turner	Each	\$55.00
Book - Part 1 : Ford in Britain, : Plus Ford in France and Germany	each	\$15.00
Book - Part 2 : Ford in Britain : Including Ford in Europe in the 1950s and 1960s	each	\$15.00
Book - Part 3 : Ford in Britain : Plus Ford in Europe	each	\$15.00
Book – The History of Ford in Australia / By Norm Darwin	each	\$45.00



# Workshop Manuals

**Our stock of 2<sup>nd</sup> hand workshop manuals changes regularly. Please inquire about our current stock available**

TC Cortina 4 Cyl.	S/P – 2 <sup>nd</sup> Hand	\$35.00
TC Cortina 4 Cyl.	Genuine Ford – 2 <sup>nd</sup> Hand	\$65.00
TC Cortina 6 Cyl.	Genuine Ford – 2 <sup>nd</sup> Hand	\$65.00
TD Cortina 4 Cyl. & 6 Cyl.	Genuine Ford – 2 <sup>nd</sup> Hand	\$75.00
TE Cortina 4 Cyl.	S/P – 2 <sup>nd</sup> Hand	\$35.00
TE Cortina 4 Cyl. & 6 Cyl.	Genuine Ford – 2 <sup>nd</sup> Hand	\$65.00
TF Cortina 4 Cyl.	S/P – 2 <sup>nd</sup> Hand	\$35.00
TF Cortina 6 Cyl.	S/P - NEW	\$45.00