

# FORD CAPRI MkI

## New Parts Price List

**YESTERFORD Pty Ltd**

### English Small Ford Specialist

Anglia - Capri - Cortina - Escort - Prefect - Thames - Zephyr



This catalogue supersedes all lists prior to **22 June 2026**

*The most up to date version of this catalogue is on our web site*

**[www.yesterford.com](http://www.yesterford.com)**

*Some parts in this catalogue are imported from overseas, and prices may change due to the fluctuating currency exchange rate and changing supplier & freight costs.*

*If you are emailing an inquiry, please include :*

***Your details :*** Name, Phone Number & Postcode (& Country if outside Australia) for delivery.

***Vehicle details*** relevant to inquiry : Model, Year, Engine Size, Body Type (eg. 2 door, 4 door, Ute), Transmission, etc

1/21 Burgess Road  
Bayswater North  
VICTORIA 3153  
AUSTRALIA  
Ph: 03 9761 4714  
International Ph: +61 3 9761 4714  
Email: [sales@yesterford.com](mailto:sales@yesterford.com)

### Opening Hours

Monday – Friday : 9am – 4:00pm  
Saturday : By appointment  
Sunday & Public Holidays : CLOSED

# Model Information





## Capri Mk1 1969-73

Engine Code	Type
D	1600 cc 1V
F	1600 cc 2V
P	3000 cc 2V

Transmission	Type
V	4 Speed Floor Shift
X	4 Speed GT Floor Shift
Y	3 Speed Auto Floor Shift

Engine	Cyl.	Bore	Stroke	Capacity
1600 cc	4	3.1881"	3.056"	1598 cc
3000 cc	6	3.687"	2.851"	3000 cc

Firing Order	Spark Plugs
1600	1.2.4.3. 
3000	142536 

Fluid Capacity		
Engine - Oil	1600	4.1 Litre (includes filter)
	3000	4.8 Litre (includes filter)
Trans - Oil	Manual 1600	1.1 Litre
	Manual 3000	1.7 Litre
	Auto	6.4 Litre
Rear Axle - Oil		1.1 Litre
Fuel Tank	1600	47.6 Litre
	3000	61.4 Litre
Cooling System	1600	6.5 Litre
	3000	11.7 Litre

# Engine Gaskets and Seals

<b>Part Description</b>	<b>Unit</b>	<b>1600 OHV X/Flow</b>	<b>3000 V6</b>
Gasket Set - Full Engine	each	\$120.00	—
Gasket Set - Full Engine – D Port Heads <i>** Can be modified to fit Oval Port Heads</i>	each	—	\$190.00
Gasket Set - Top Engine (VRS)	each	\$65.00	—
Gasket Set - Top Engine (VRS) - Felpro Head Gasket	each	\$115.00	—
Gasket Set - Top Engine (VRS) - D Port Heads <i>** Can be modified to fit Oval Port Heads</i>	each	—	\$130.00
Gasket Set - Bottom Engine	each	\$55.00	\$60.00
Gasket - Cylinder Head	each	\$35.00	\$45.00
Gasket - Cylinder Head - Felpro	each	\$75.00	—
Gasket - Rocker Cover (V6 requires 2 of these gaskets)	each	\$15.00	\$15.00
Gasket - Rocker Cover - Rubber	each	\$22.50	—
Gasket - Inlet Manifold	each	\$8.00	—
Gasket - Inlet Manifold – D Port Heads <i>** Can be modified to fit Oval Port Heads</i>	each	—	\$28.00
Gasket - Exhaust Manifold	set	\$8.00	\$18.00
Gasket - Exhaust Extractor	each	\$20.00	—
Gasket - Sump	each	\$35.00	\$25.00
Gasket - Water Pump	each	\$3.00	\$6.00
Gasket - Thermostat Housing	each	\$4.00	\$4.00
Gasket - Front Timing Case	each	\$6.00	\$15.00
Gasket - Rear Cover	each	\$4.50	\$5.00
Gasket - Oil Pump	each	\$6.00	—
Gasket - Fuel Pump	each	\$3.00	\$3.00

Seal - Crankshaft Front	each	\$15.00	\$19.50
Seal - Crankshaft Rear	each	\$22.00	\$22.00
Seal - Valve Stem	set	\$15.00	\$32.00
“O” Ring - Oil Pump	each	\$3.00	—
“O” Ring - Distributor	each	\$1.00	—
Sump Plug Washer	each	\$2.00	\$2.00

## Engine Components & Accessories

Part Description	Unit	1600 OHV X/Flow	3000 V6
Piston & Rings - Most Sizes	set	\$395.00	—
Piston & Rings – V6 STD +020 +030 +040 & +060	set	—	\$950.00
Piston Rings - All Sizes	set	\$165.00	\$225.00
		<b>#NOTE</b>	
Bush - Small End	each	\$9.50	—
Bearing - Conrod - All Sizes	set	\$65.00	\$125.00
Bearing - Mains - All Sizes <i>(if motor is fitted with STD back main bearings)</i>	set	\$85.00	\$110.00
Bearing - Mains – STD, .010, .020, .030 or .040 <i>(if motor is fitted with .015 back main bearings)</i>	set	\$145.00	—
Bearing - Crankshaft Thrust Washers STD	set	\$25.00	\$35.00
Bearing - Crankshaft Thrust Washers OVERSIZE Please advise size: .0025 .005 .0075 or .010	set	\$65.00	\$65.00
Bearing - Camshaft	set	\$65.00	\$95.00

### #NOTE – Piston rings

Some 1600 pistons have all 2.0 compression rings, and some have 1.5 + 2.0  
Please advise piston bore size and compression ring size you require

<b>Part Description</b>	<b>Unit</b>	<b>1600 OHV X/Flow</b>	<b>3000 V6</b>
Timing Chain	each	\$18.00	—
Timing Chain Tensioner	each	\$45.00	—
Timing Chain Tensioner Pad	each	\$15.00	—
Timing Chain Tensioner Pad – For Double Row Chain	each	\$35.00	—
Timing Chain Kit - Chain, Tensioner & Pad & Gears	each	\$145.00	—
Double Row Timing Chain & Gear Set - Adjustable	set	\$275.00	—
Timing Gear Set	set	—	\$450.00
Rocker Shaft	each	\$65.00	—
Camshaft – STD – New <i>(includes Camshaft Sprocket)</i>	each	\$450.00	—
Camshaft - GT – NEW <a href="#">SEE SPECS</a>	each	\$495.00	—
Camshaft – Fast Road – Kit <a href="#">SEE SPECS</a> (Incl Cam Followers + Springs)	kit	—	\$1,950.00
Camshaft Followers (1600 - set of 8) (V6 – set of 12)	set	\$160.00	\$180.00
Camshaft Sprocket	each	\$45.00	—
Camshaft Sprocket Lock Tab	each	\$5.00	—
Camshaft Retaining Plate	each	\$85.00	—
Camshaft Retaining Plate Lock Tab	each	\$5.00	—
Crankshaft Front Pulley - Heavy Duty	each	\$275.00	—
Crankshaft Front Pulley –STD – Reconditioned	each	\$95.00	—
Crankshaft Sprocket	each	\$25.00	—
Valves - Inlet	each	\$25.00	\$30.00
Valves - Exhaust	each	\$25.00	\$33.00
Valve Springs - Heavy Duty	set	\$160.00	\$180.00
Valve Springs - Standard	set	\$80.00	\$120.00
Valve Spring Retaining Cap	set	\$135.00	—
Valve Spring Retaining Cotters (3 Groove Type)	set	\$60.00	—
Push Rods (set of 12)	set	—	\$395.00

Push Rod Guide Plate	each	—	\$35.00
Ring Gear - Flywheel	each	—	\$175.00
Ring Gear – Flywheel – 254 ID	each	\$175.00	—
Ring Gear – Flywheel – 257ID	each	\$175.00	—
Flywheel Bolt Set (6 Bolts)	set	\$32.00	\$32.00
Oil Pump	each	—	\$125.00
Oil Pump Drive Shaft	each	—	\$35.00
Oil Pump - Screw on Filter Type ( <i>use Z418 Filter</i> )	each	\$125.00	—
Oil Pump - High Volume ( <i>use Z418 Filter</i> )	each	\$195.00	—
Oil Pressure Switch	each	\$15.00	\$15.00
Oil Filler Cap (Plastic) – No Pipe	each	\$15.00	\$15.00
Oil Filler Cap (Plastic) – With Pipe	each	\$19.50	\$19.50
Oil Filler Cap (Alloy) – No Pipe	each	\$75.00	\$75.00
Oil Filler Cap (Alloy) – With Pipe	each	\$95.00	\$95.00
Sump Plug (includes washer)	each	\$8.00	\$8.00
Alloy Rocker Cover <a href="#">SEE PHOTO</a>	each	\$495.00	—
PCV Valve	each	\$18.00	\$18.00
PCV Valve Rubber Seal	each	\$18.00	\$18.00
Engine Bolt Set	set	\$20.00	—
<b>Engine Mounts</b> - Rubber 1600 = 50mm ; V6 = 37mm	each	\$45.00	\$45.00

## Exhaust

Exhaust Extractors	each	\$485.00	\$695.00
Extractor Gasket	each	\$20.00	—
Inlet Manifold Bolt/Stud Set	set	\$25.00	—
Exhaust Manifold Stud Set	set	\$35.00	
Exhaust Hanger Rubber Rings	each	\$5.00	\$5.00

# Accelerator Cables, Carbie Kits, Fuel Pumps & Sports Air Cleaners

Part Description	Unit	1600 OHV X/Flow	3000 V6
Accelerator Cable Clip	each	\$8.00	\$8.00
Accelerator Pedal Pad	each	\$18.00	\$18.00
Carburetor Overhaul Kit – 1600	each	\$115.00	—
Carburetor Overhaul Kit – 1600 GT	each	\$115.00	—
Carburetor Overhaul Kit - V6 - 38DGAS <i>(Six Screws in Top)</i>	each	—	\$115.00
Carburetor Overhaul Kit - V6 - 40DFAV <i>(Five Screws in Top)</i>	each	—	\$115.00
Fuel Pump - Sealed Type (includes gasket)	each	\$95.00	\$95.00
Fuel Pump – Glass Bowl Type (includes gasket) <i>*Reconditioned / Change Over</i>	C/O(2)	\$155.00	\$155.00
Fuel Pump Repair Kit – Glass Bowl Type	each	\$95.00	\$95.00
Fuel Pump Spacer	each	\$18.00	—
Fuel Pump Blanking Plate	each	\$30.00	\$30.00
Gasket - Fuel Pump	each	\$3.00	\$3.00
Filter – Fuel - Plastic	each	\$6.00	\$6.00
Filter – Fuel - Metal	each	\$18.50	\$18.50
Chrome Rectangular Sports Air Cleaners -1600 GT	each	\$65.00	—
Replacement Filter	each	\$25.00	—
Alloy Rocker Cover - Black (with Gasket)	each	\$350.00	—

## Tune Up & Service

Part Description	Unit	1600 OHV X/Flow	3000 V6
Spark Plugs	set	\$24.00	\$36.00
Spark Plug Leads	set	\$45.00	\$49.50
Spark Plug Lead Separator Block	each	\$18.00	—

Contact Points - Lucas Distributor *	each	\$12.00	—
Contact Points - Motorcraft/Fomoco Distributor *	each	\$12.00	\$12.00
Rotor Button - Australian Lucas Distributor *	each	\$19.50	—
Rotor Button - Lucas Distributor – 25D4*	each	\$12.00	—
Rotor Button - Lucas Distributor – 45D4*	each	\$16.50	—
Rotor Button - Motorcraft/Fomoco Distributor *	each	\$18.00	\$18.00
Rotor Button - Bosch Distributor *	each	—	\$25.00
Condenser - Lucas Distributor *	each	\$12.00	—
Condenser - Motorcraft/Fomoco Distributor *	each	\$18.00	\$18.00
Condenser - Bosch Distributor *	each	—	\$25.00
Distributor Cap - To Suit a Lucas Distributor *	each	\$35.00	—
Distributor Cap - To Suit an Australian Lucas Distributor *	each	\$55.00	—
Distributor Cap - To Suit a Motorcraft/Fomoco Distributor *	each	\$35.00	\$55.00
Distributor Cap - To Suit a Bosch Distributor *	each	—	\$55.00
Distributor - Lucas - Points Type - New	each	\$155.00	—
Distributor - Electronic Type - New	each	\$275.00	\$350.00
Electronic Ignition Kit – To Suit a Lucas Distributor *	each	\$125.00	\$95.00
Electronic Ignition Kit – To Suit a Fomoco Distributor *	each	\$125.00	\$135.00
Electronic Ignition Kit – To Suit V6 Replacement Distributor*	each	—	\$135.00
Ignition Coil	each	\$65.00	\$65.00
Filter - Oil - Baldwin	each	—	\$25.00
Filter - Oil - Ryco	each	—	\$39.50
Filter - Oil - Original Pump	each	\$18.00	—
Filter - Oil - Aftermarket Pump	each	\$12.00	—
Filter - Air	each	\$19.50	\$19.50
Filter – Sport Air Filter – Round <i>Suits original Carby with 59mm top</i>	each	\$35.00	—
Filter - Fuel	each	\$6.00	\$6.00
Wiper Blade Assembly - Stainless Steel	each	\$45.00	\$45.00
Wiper Arm	each	\$55.00	\$55.00

\* When ordering Contact Points, Rotor Buttons, Condenser, Distributor Caps and Ignition Kits, please advise the make of your existing distributor

# Cooling System

Part Description	Unit	1600 OHV X/Flow	3000 V6
Water Pump (includes gasket)	each	\$75.00	\$125.00
Gasket - Water Pump	each	\$3.00	\$6.00
Thermostat	each	\$15.00	\$15.00
Thermostat Housing	each	\$85.00	\$135.00
Thermostat Housing with provision for thermostat Fan Switch, etc	each	\$145.00	—
Gasket - Thermostat Housing (includes gasket)	each	\$4.00	\$4.00
Fan Bearing 24mm.	each	—	\$45.00
Fan Bearing 30mm.	each	—	\$45.00
Radiator Hose - Top	each	\$18.00	—
Radiator Hose - Top - V6 – Mk1 Early (to 10/1971) **	each	—	\$25.00
Radiator Hose - Top - V6 – Mk1 Late (10/1971 on) **	each	—	\$65.00
Radiator Hose - Bottom	each	\$15.00	—
Radiator Hose - Bottom - V6 - Mk1 Early (to 10/1971) **	each	—	\$25.00
Radiator Hose - Bottom - V6 – Mk1 Late (10/1971 on) **	each	—	\$65.00
Radiator Cap	each	\$12.00	\$12.00
Fan Belt	each	\$12.00	\$15.00
Temp. Sender Unit	each	\$29.50	\$29.50
Water Outlet - Inlet Manifold	each	\$12.00	—
Water Pump Inlet - Heater Hose	each	\$12.00	—
Engine Fan	each	\$110.00	\$110.00
Welsh Plug – Brass – Block Side & Head – V6	each	—	\$4.00
Welsh Plug - Brass – Block Side & Head – 1600	each	\$4.00	—
Welsh Plug – Brass – Block Rear	each	\$5.00	\$5.00

**\*\* NOTE :** these dates are not necessarily a clear indication as to the radiator hose required. Please check [TOP HOSE](#)



and [BOTTOM HOSE](#)



photos to determine if you require the early or late hoses.

Top hoses - there is only a small difference of 20mm in length

Bottom hose – are quite a different shape and size

# Starter Motor & Alternator

Part Description	Unit	1600 OHV X/Flow	3000 V6
Starter Motor - New - High Torque	each	\$650.00	\$695.00
Starter Motor - Pinion	each	\$75.00	—
Starter Solenoid	each	\$65.00	—
Alternator - New Lucas 18ACR (45 Amp)	each	\$325.00	\$325.00
Alternator Wiring Plug ( <i>suits English Lucas Alternator</i> )	each	\$15.00	\$15.00

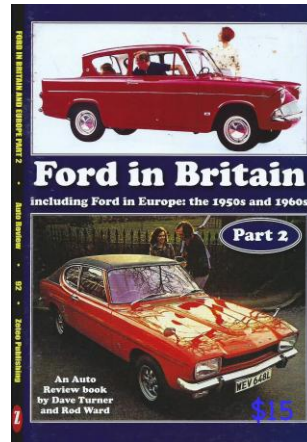
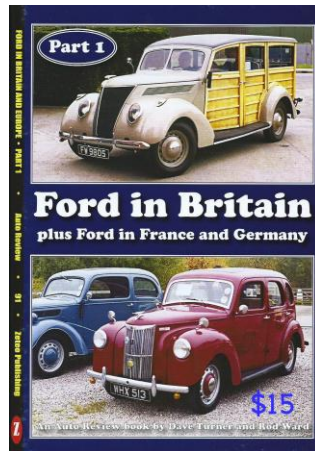
### \*Reconditioned / Change Over

Items available as **\*Reconditioned / Change Over** require a change over unit from the customer.

A deposit will be charged for all Change Over units when core units are not supplied at the time of purchase.

All deposits are refunded when the change over unit is received from the customer (we appreciate prompt return of change over units).

Deposit required : C/O(2) = \$30.00, C/O(3) = \$50.00, C/O(4) = \$100.00



Ford in Britain books - \$15 each

### \*Reconditioned / Change Over

Items available as **\*Reconditioned / Change Over** require a change over unit from the customer.

A deposit will be charged for all Change Over units when core units are not supplied at the time of purchase.

All deposits are refunded when the change over unit is received from the customer (we appreciate prompt return of change over units).

Deposit required : C/O(2) = \$30.00, C/O(3) = \$50.00, C/O(4) = \$100.00

# Transmission

Part Description	Unit	1600 OHV X/Flow	3000 V6
Gearbox Mount - Manual or Automatic	each	\$55.00	\$55.00
Gearbox - Small Parts Kit <b>***1 Note below</b>	each	\$460.00	\$385.00
<u>Gasket Set - Manual Gearbox</u>	set	\$35.00	\$25.00
Gasket – Bell Housing	each	\$5.00	—
<u>Seal - Front Input Shaft – 1600</u> <b>***2 Note below</b>	each	\$15.00	—
<u>Seal - Front Input Shaft - V6</u> <b>***3 Note below</b>	each	—	\$15.00
<u>Seal - Extension Housing</u>	each	\$15.00	\$15.00
<u>Seal - Speedo Drive</u>	each	\$8.00	—
<u>Seal - Selector Shaft (3 Required)</u>	each	—	\$10.00
<u>Bearing - Front</u>	each	\$35.00	\$45.00
<u>Bearing - Rear</u>	each	\$35.00	\$75.00
<u>Bearing - Main Shaft Pilot</u>	each	\$75.00	\$110.00
Syncro Rings	each	\$75.00	\$75.00
<u>Layshaft – Only available for 1600</u>	each	\$175.00	—
<u>Layshaft Rollers</u>	set	\$65.00	\$55.00
Thrust Washers - Cluster Gear (1600 OHV X/Flow)	pair	\$135.00	—
Thrust Washer - Cluster Gear (3000 V6) <i>Front ONLY is available</i>	each	—	\$25.00
Ex/Housing Rear Bush	each	\$95.00	—
Tailshaft Centre Bearing - 2 Piece Shaft	each	\$25.00	—
Tailshaft Centre Bearing - 2 Piece Shaft – WITH End Caps	each	\$45.00	—
Tailshaft Centre Bearing Support Rubber	each	\$45.00	—
Universal Joint - Tailshaft	each	\$35.00	\$35.00

**Notes:** **\*\*\*1 Underlined Parts are Included in Small Parts Kit**

**\*\*\*2 There are 4 possible front seal sizes. Please advise the size required.**

**□ 35 x 22 x 6.5   □ 41.3 x 22 x 9.5   □ 40 x 27 x 9.5   □ 41.3 x 27 x 9.5**

**\*\*\*3 There are 2 possible front seal sizes. Please advise the size required.**

**□ 41.3 x 27 x 95   □ 40 x 28 x 8**

Part Description	Unit	1600 OHV X/Flow	3000 V6
Gear Lever Knob – Original Style <a href="#">PHOTO</a> <i>Please refer to attached photo and advise which style you require</i>	each	\$65.00	—
Gear Lever Knob – After Market Type	each	\$19.50	\$19.50
Gear Lever Pivot Ball	each	\$20.00	—
Gear Lever *Reconditioned / Change Over	C/O(2)	\$145.00	—
Reverse Light Switch -12 mm Thread	each	\$75.00	—
Reverse Light Switch -14 mm Thread	each	\$45.00	\$45.00
Bell Housing Sandwich Plate. <i>(Please advise if 2 bolt or 3 bolt starter motor)</i>	each	\$75.00	—
Speedo Cable – Manual <b>Check the speedo has not seized BEFORE fitting a new speedo cable</b>	each	\$65.00	\$65.00
Speedo Cable - Auto <b>Check the speedo has not seized BEFORE fitting a new speedo cable</b>	each	\$65.00	\$65.00
Speedo Cable Circlip - 1600 Manual, V6 Automatic	each	\$2.00	\$2.00
Pan Gasket & Filter Kit - Automatic	each	\$15.00	\$15.00
Drive Plate - BW35 Automatic	each	\$55.00	—
Inhibitor Switch - BW35 Automatic	each	\$75.00	\$75.00
Kickdown Cable - Automatic	each	\$95.00	\$95.00
Seal - Front - BW35	each	\$15.00	\$15.00

## Clutch

Part Description	Unit	1600 OHV X/Flow	3000 V6
Clutch Cable	each	\$95.00	\$165.00
Clutch Kit - New	each	\$295.00	—
Clutch Driven Plate	each	\$110.00	\$235.00
Clutch Release Bearing	each	\$55.00	\$55.00
Clutch Pedal Pad	each	\$10.00	\$10.00
Clutch Fork Boot	each	\$45.00	—
Bearing - Crankshaft Spigot	each	\$25.00	\$10.00
Bush - Clutch Cable to Bell Housing	each	\$10.00	\$10.00

# Brake

Part Description	Unit	1600 OHV X/Flow	3000 V6
Brake Disc	each	\$125.00	\$125.00
Brake Disc - Vented, Cross Drilled & Groved <i>** Metal pipe will need to be changed to metric</i>	each	\$175.00	\$175.00
Brake Disc Pads (set of 4 pads)	set	\$55.00	\$55.00
Brake Disc Pad Fitting Kit - Shims & Retaining Pins	each	\$25.00	\$25.00
Brake Disc to Hub Lock Tab	Set 4	\$20.00	\$20.00
Brake Caliper Kit	each	\$25.00	\$25.00
Brake Caliper Pistons	each	\$45.00	\$45.00
Brake Caliper – New (Includes Disc Pad Fitting Kit)	pair	\$395.00	—
Brake Caliper – Reconditioned <b>(We require your existing calipers to recondition)</b>	pair	\$395.00	\$395.00
Brake Caliper Mounting Bolt Lock Tab	pair	\$10.00	\$10.00
Brake Caliper Spacer Kit - 1 kit per car (Used to fit vented discs to existing calipers)	kit	\$95.00	\$95.00
Brake Shoes (set of 4 shoes) <i>*Reconditioned / Change Over</i>	set C/O(2)	\$65.00	\$75.00
Brake Master Cylinder - Repair Kit <a href="#">Mk1 - PHOTO</a> <i>**Please advise bore size. 19.05mm or 20.64mm</i>	each	\$35.00	\$35.00
Brake Booster <i>*Reconditioned / Change Over</i>	C/O(3)	\$695.00	\$695.00
Brake - Rear Wheel Cylinder	each	\$45.00	\$45.00
Brake - Rear Wheel Cylinder Repair Kit	each	\$15.00	\$15.00
Brake - Rear Wheel Cylinder Retaining Clip Set <i>1 set per car</i>	set	\$20.00	\$20.00
Dust Boot - Rear Wheel Cylinder - Hand Brake Lever	each	\$15.00	\$15.00
Brake Hose - Front or Rear	each	\$45.00	\$45.00
Brake Pedal Pad - Manual	each	\$10.00	\$10.00
Brake Pedal Pad - Auto	each	\$75.00	\$75.00
Hand Brake Cable - Front	each	\$95.00	\$95.00
Hand Brake Cable - Rear (Cross Cable)	each	\$75.00	\$75.00
Bush - Brake & Clutch Pedal Pivot	set 4	\$30.00	\$30.00
Switch - Brake Light	each	\$21.50	\$21.50

## Front and Rear Axle

Part Description	Unit	1600 OHV X/Flow	3000 V6
Bearing & Seal Kit - Front Hub (One Wheel Set)	each	\$75.00	\$75.00
Seal - Front Hub	each	\$15.00	\$15.00
Front Hub Nut & Washer Set (Does Both Sides)	set	\$30.00	\$30.00
Front Hub Grease Cap	each	\$25.00	\$25.00
Bearing - Rear Axle ( <i>Incl. Lock Ring</i> )	each	\$75.00	\$75.00
Bearings - Diff Centre	set	\$195.00	\$475.00
Seal - Diff Pinion	each	\$25.00	\$35.00
Diff Pinion Flange ( <i>suit STD &amp; GT with English Diff</i> )	each	\$225.00	—
Diff Pinion Flange Nut	each	\$29.50	\$29.50
Collapsible Spacer - Diff Pinion (English Diff)	each	\$45.00	—
Collapsible Spacer - Diff Pinion (Atlas Diff)	each	—	\$45.00
Gasket - Diff Centre to Axle Housing	each	\$6.00	\$15.00
Tail Shaft to Diff Bolt Set <i>Suits models with threaded diff flange</i>	set	\$10.00	\$10.00
Crown Wheel & Pinion Set - New <b>(Note ^^)</b>	set	\$850.00	—
Crown Wheel Bolt Set (6 Bolts)	set	\$32.00	\$32.00
Diff Rebuild Kit for ENGLISH DIFF – <i>Includes: Bearings, Collapsible Spacer, Pinion Seal, Gasket</i>	kit	\$270.00	—
Diff Centre - Reco (Customer Supplied Centre) <u>(New</u> Crown Wheel & Pinion) (New Flange)	each	\$1550.00	—
Helical Limited Slip Diff Unit (Suits English Diff)	each	\$895.00	—
Wheel Nuts – STD (Set of 16)	set	\$30.00	\$30.00

**Note (^^) Available in 4.4, 4.1, 3.89, 3.77, 3.54**

# Suspension and Steering

Part Description	Unit	1600 OHV X/Flow	3000 V6
Strut Inserts – GAZ Adjustable <b>**Advise if 1/2 or 5/8 centre hole</b>	pair	\$650.00	\$650.00
Top Strut Mounts – Original Type	pair	\$450.00	\$450.00
Top Strut Mounts – Roller Bearing Type (incl Adapters & Strut Caps) <i>(May raise car approx 20mm)</i>	pair	\$350.00	\$350.00
Rear Shockers – GAZ Adjustable	pair	\$595.00	\$595.00
Lower Control Arm With Ball Joint & Rubber Bushes & Boot	each	\$95.00	\$95.00
Lower Control Arm With Ball Joint & Urethane Bushes & Boot – <i>Aftermarket Style</i>	pair	\$250.00	\$250.00
Lower Control Arm With Ball Joint & Urethane Bushes & Boot – <i>Original Style</i>	pair	\$335.00	\$335.00
Boot - Control Arm Ball Joint	pair	\$12.00	\$12.00
Bush – Control Arm – Outer (Rubber)	pair	\$20.00	\$20.00
Sway Bar Nut & Washer Set	set	\$30.00	\$30.00
Sway Bar Clamp (Front)	pair	\$45.00	\$45.00
Tie Rod End – Outer (Includes Boot)	each	\$25.00	\$25.00
Boot - Tie Rod End	pair	\$12.00	\$12.00
Steering Arms	pair	\$145.00	\$145.00
Steering Arm Bolt Set	set	\$45.00	\$45.00
Boot - Steering Rack	pair	\$45.00	\$45.00
Steering Rack Clamps	pair	\$45.00	\$45.00
Steering Rack Mounts - Rubber	pair	\$20.00	\$20.00
Steering Coupling Repair Kit - 13 mm. Thick - Urethane <i>Coupling Kits Are For Flexible End Only</i>	each	\$65.00	\$65.00
Steering Coupling Repair Kit - 21 mm. Thick - Urethane <i>Coupling Kits Are For Flexible End Only</i>	each	\$65.00	\$65.00
Steering Coupling Repair Kit - 26.5 mm. Thick – Urethane <i>Coupling Kits Are For Flexible End Only</i>	each	\$65.00	\$65.00
Lowering Blocks - 1" <i>(Kit includes U Bolts)</i>	kit	\$115.00	\$115.00
Lowering Blocks - 1 1/2" <i>(Kit includes U Bolts)</i>	kit	\$125.00	\$125.00
Lowering Blocks - 2" <i>(Kit includes U Bolts)</i>	kit	\$135.00	\$135.00
Lowering Blocks - 2 1/2" <i>(Kit includes U Bolts)</i>	kit	\$145.00	\$145.00
U Bolt Set	set	\$55.00	\$55.00

## Urethane Suspension Bush Kits

Front End	Kits Required Per Vehicle	1600 OHV X/Flow	3000 V6
Sway Bar Front Mount	1	\$25.00	\$25.00
Lower Control Arm - Inner	1	\$55.00	\$55.00
Lower Control Arm - Outer	1	\$45.00	\$55.00
Steering Rack Mount	1	\$30.00	\$30.00
Steering Coupling Repair Kit - 13 mm. Thick <i>Coupling Kits For Flexible End Only</i>	1	\$65.00	\$65.00
Steering Coupling Repair Kit - 21 mm. Thick <b>NLA</b>	1	—	—
Steering Coupling Repair Kit - 26.5 mm. Thick <i>Coupling Kits For Flexible End Only</i>	1	\$65.00	\$65.00

Rear End	Kits Required Per Vehicle	1600 OHV X/Flow	3000 V6
Rear Spring - Front Eye (Spring Eye I.D. 48 mm) ***	1	\$85.00	\$85.00
Rear Spring - Front Eye (Spring Eye I.D. 52 mm) ^^	1	\$140.00	\$140.00
Rear Spring - Rear Eye (Spring Eye I.D. 41mm.) ***	1	\$55.00	\$55.00
Rear Spring - Rear Eye (Spring Eye I.D. 48mm.) ***	1	\$85.00	\$85.00
Shackle to Chassis ***	1	\$35.00	\$35.00
Rear Spring Sandwich Pad	1	\$95.00	\$95.00
Diff Location Arms - Front Eye	1	\$65.00	\$65.00
Diff Location Arms - Rear Eye	1	\$75.00	\$75.00

\*\*\* Also available in rubber. See below

^^ Required sleeves are supplied with the bushes for the ID 52mm

## Rubber Suspension Bush Kits

Rear End	Kits Required Per Vehicle	1600 OHV X/Flow	3000 V6
Rear Spring - Front Eye (Spring Eye I.D. 48 mm)	2	\$45.00 ea	\$45.00 ea
Rear Spring - Front Eye (Spring Eye I.D. 52 mm)	-	ONLY IN	URETHANE
Rear Spring - Rear Eye (Spring Eye I.D. 41mm.)	2	\$35.00 ea	\$35.00 ea
Rear Spring - Rear Eye (Spring Eye I.D. 48mm.)	2	\$35.00 ea	\$35.00 ea
Shackle to Chassis	4	\$6.00 ea	\$6.00 ea

# Lighting & Electrical

Part Description	Unit	\$
Head Lamp / Head Light	each	\$110.00
Head Light Wiring Plug	each	\$10.00
Lens - Front Indicator	each	\$95.00
Switch - Indicator Control (Lucas) <i>Minor Modification Required</i> <a href="#">SEE PHOTO</a> <a href="#">SEE MODIFICATION&amp; WIRING INSTRUCTIONS</a>	each	\$125.00
Switch - Brake Light	each	\$21.50
Switch – Door Switch / Courtesy Light - <i>Require a screw to be fitted</i> <a href="#">SEE PHOTO</a>	pair	\$30.00
Switch – Door Switch / Courtesy Light <a href="#">SEE PHOTO</a>	pair	\$45.00
Lens - Tail Light - (LH &RH)	each	\$75.00
Tail Light Body (L or R) - NO Lens, includes Seal	each	\$195.00
Tail light Chrome Surrounds	pair	\$130.00
Seal - Tail Light Lens to Tail Light Housing	each	\$18.00
Seal - Tail Light (Housing to Body) Set of 2 pieces	set	\$70.00
Globe - Head Light - H4	each	\$10.00
Globe - Stop/Tail Light	each	\$3.00
Globe - Indicator	each	\$3.00
Globe - Park Light/Number Plate Light	each	\$3.00
Wiring Loom Retainer – Loop Type	each	\$2.00
Wiring Loom Retainer -Two Prong Type – Grey OR Black	each	\$2.00
Indicator Flasher Can	each	\$20.00
Interior Light Assembly	each	\$75.00

# Body Parts

Part Description	Unit	\$
Clip - Bonnet Stay (Side Entry Type)	each	\$5.00
Grommet - Bonnet Stay	each	\$5.00
Boot Lid Badge "Capri"	each	\$55.00
Boot Lock Gasket	each	\$5.00
Door Hinge Pins	each	\$4.00
Door Locking Knob - Black	each	\$12.50
Chrome Sports Mirror (1960's Bullet Style) <a href="#">SEE PHOTO</a> Mounting Holes - 50mm hole centre to hole centre	each	\$65.00
Bumper Bar Bolt Set (Set of 4)	set	\$45.00
<b>Carpet Set</b> – Includes Front & Rear Floors	set	\$320.00

**Please advise : Colour, Auto or Manual**

[See HERE for Colours](#) – Please allow for difference caused by camera flash & individual device screens. Available in Plush or Loop.

# Rubber Seal Kit

Capri Mk1 1969/73      \$910.00

## Contents

- 1 Front Windscreen Seal
- 1 Rear Windscreen Seal
- 2 Windscreen Chrome Locking Strips
- 2 Door Seals
- 2 Outer Door Belts (Weather Strips)
- 2 Inner Door Belts (Weather Strips)
- 2 Bailey Channel (Glass Runner)
- 1 Boot Seal
- 1 Boot Lip Seal

*Our Rubber Kits can be purchased as complete Kits, or we can customise a kit with only the parts you require.*

*Please inquire / advise at time of ordering*

## Rubber Seals, Weather Strips & other Rubber Parts

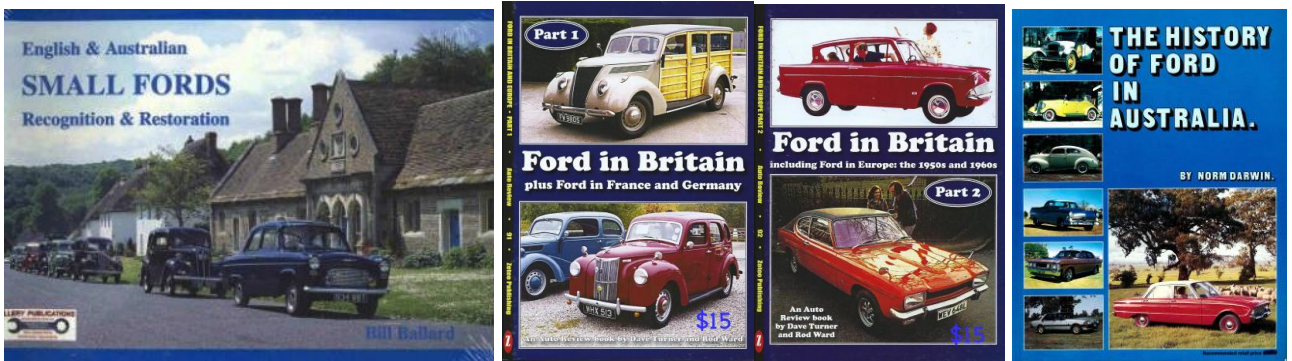
Part Description	Unit	\$
Seal - Windscreen - Front	each	\$165.00
Seal - Windscreen - Rear	each	\$165.00
Chrome (Plastic) Locking Strip - Windscreen Seal - Front or Rear	each	\$35.00
Chrome Locking Strip - Straight Joiner	each	\$10.00
Black Locking Strip - Windscreen Seal - Front or Rear - With Joiner	each	\$35.00
Seal - Door Opening (Mitered / Moulded)	each	\$75.00
Door Belt Outer (Weather Strip)	each	\$45.00
Door Belt Inner (Weather Strip)	each	\$45.00
Bailey Channel (Glass Runner)	each	\$45.00
Seal - Boot Lid	each	\$55.00
Seal - Boot Lid Lip	each	\$35.00
Bonnet Bump Stop – Front - (Round Stop) (pair)	pair	\$15.00
Bonnet Rod Clip – Top Entry	each	\$5.00
Grommet - Bonnet Stay	each	\$5.00

Confused by the different parts of the rubber kit?

[See here for details](#)

# Books

Book - English & Australian Small Fords Recognition & Restoration By Bill Ballard	each	\$25.00
Book – Ford Popular and the Small Side Valves / By Dave Turner	each	\$55.00
Book - Part 1 : Ford in Britain, : Plus Ford in France and Germany	each	\$15.00
Book - Part 2 : Ford in Britain : Including Ford in Europe in the 1950s and 1960s	each	\$15.00
Book - Part 3 : Ford in Britain : Plus Ford in Europe	each	\$15.00
Book – The History of Ford in Australia / By Norm Darwin	each	\$45.00



# Workshop Manuals

Our stock of 2<sup>nd</sup> hand workshop manuals changes regularly. Please inquire about our current stock available

Mk1 Capri 1600	S/P – 2 <sup>nd</sup> Hand	\$35.00
Mk1 Capri 3000 V6	Haynes – 2 <sup>nd</sup> Hand	\$45.00