

# FORD

# ZEPHYR Mk 1, 2 & 3

# CONSUL Mk 1 & 2

## New Parts Price List

**YESTERFORD Pty Ltd**

**English Small Ford Specialist**

Anglia - Capri - Cortina - Escort - Prefect - Thames - Zephyr



This catalogue supersedes all lists prior to **5 June 2026**  
*The most up to date version of this catalogue is on our web site*

**[www.yesterford.com](http://www.yesterford.com)**

*Some parts in this catalogue are imported from overseas, and prices may change due to the fluctuating currency exchange rate and changing supplier & freight costs.*

*If you are emailing an inquiry, please include :*

***Your details :*** Name, Phone Number & Postcode (& Country if outside Australia) for delivery.

***Vehicle details*** relevant to inquiry : Model, Year, Engine Size, Body Type (eg. 2 door, 4 door, Ute), Transmission, etc

1/21 Burgess Road  
Bayswater North  
VICTORIA 3153  
AUSTRALIA  
Ph: 03 9761 4714  
International Ph: +61 3 9761 4714  
Email: [sales@yesterford.com](mailto:sales@yesterford.com)

### Opening Hours

Monday – Friday : 9am – 4pm  
Saturday : By appointment  
Sunday & Public Holidays : CLOSED

# Engine Gaskets & Seals

Part Description	Unit	MK1	MK2	MK3
Gasket Set - Full Engine - Six Cylinder	each	\$245.00	\$245.00	\$245.00
Gasket Set - Full Engine - Four Cylinder	each	\$220.00	\$220.00	\$220.00
Gasket Set - Top Engine - VRS - Six Cylinder 	each	\$175.00	\$175.00	\$175.00
Gasket Set - Top Engine - VRS - Four Cylinder 	each	\$145.00	\$145.00	\$145.00
Gasket Set - Bottom Engine - Six  & 4  Cylinder	each	\$75.00	\$75.00	\$75.00
Gasket - Head	each	\$95.00	\$95.00	\$95.00
Gasket - Inlet Manifold	set	\$10.00	\$10.00	\$10.00
Gasket - Sump	each	\$16.00	\$16.00	\$16.00
Gasket - Side Plate	each	\$12.00	\$12.00	\$12.00
Gasket - Rocker Cover	each	\$15.00	\$15.00	\$15.00
Gasket -Timing Cover	each	\$10.00	\$10.00	\$10.00
Gasket -Thermostat Housing	each	\$4.00	\$4.00	\$4.00
Gasket - Water Pump	each	\$5.00	\$5.00	\$5.00
Gasket - Fuel Pump	each	\$3.00	\$3.00	\$3.00
Gasket – Carburetor Base	each	\$4.00	\$4.00	\$4.00
Seal - Rear Main Set	each	\$30.00	\$30.00	\$30.00
Seal - Front	each	\$15.00	\$15.00	\$15.00
Seal - Valve Stem - 4 Cyl.	set	\$30.00	\$30.00	\$30.00
Seal - Valve Stem - 6 Cyl.	set	\$45.00	\$45.00	\$45.00
Welsh Plug - Brass 1 5/8"	each	\$4.00	\$4.00	\$4.00

## Change Over Core Deposits

Items requiring a change over unit are displayed as C/O(2), C/O(3) or C/O(4)

A deposit will be charged for all Change Over units when core units are not supplied at the time of purchase.

All deposits are refunded when the change over unit is received from the customer (if returned within 30 days).

Deposit required :

Change Over (2) = C/O(2) = \$30.00, Change Over (3) = C/O(3) = \$50.00, Change Over (4) = C/O(4) = \$100.00

# Engine Components & Accessories

Part Description	Unit	MK1	MK2	MK3
Piston & Ring Assembly - All Sizes <i>Available in 3 or 4 Ring Type</i>	each	195.00	\$195.00	\$195.00
Piston Rings - 4 Cyl.	set	\$150.00	\$150.00	\$150.00
Piston Rings - 6 Cyl.	set	\$120.00	\$225.00	\$225.00
Crankshaft Thrust Washers	set	\$45.00	\$35.00	\$35.00
Bearings - Main - 4 Cyl.	set	\$85.00	\$145.00	\$145.00
Bearings - Main - 6 Cyl.	set	\$110.00	\$195.00	\$195.00
Bearings - Conrod - 4 Cyl.	set	\$85.00	\$150.00	\$150.00
Bearings - Conrod - 6 Cyl.	set	\$125.00	\$195.00	\$195.00
Bearings - Camshaft - 4 Cyl.	set	\$70.00	\$70.00	\$70.00
Bearings - Camshaft - 6 Cyl.	set	\$95.00	\$95.00	\$95.00
Bush - Small End	each	—	\$15.00	\$15.00
Valves - Inlet **	each	\$35.00	\$35.00	\$35.00
Valves - Inlet - .015 O/S Stem	each	\$15.00	\$15.00	—
Valves – Exhaust **	each	\$35.00	\$35.00	\$35.00
Valve Guides	each	\$15.00	—	—
Valve Springs	each	\$15.00	\$15.00	\$15.00
Camshaft – 6 Cyl.	each	\$650.00	\$650.00	\$650.00
Camshaft – 4 Cyl.	each	\$475.00	\$475.00	\$475.00
Camshaft Sprocket	each	\$195.00	\$195.00	\$195.00
Camshaft Followers	each	\$19.50	\$19.50	\$19.50
Camshaft Gear Lock Tab	each	\$6.00	\$6.00	\$6.00
Camshaft Thrust Plate Lock Tab	each	\$6.00	\$6.00	\$6.00
Camshaft Block Plug	each	\$18.50	\$18.50	\$18.50
Crankshaft Sprocket	each	\$135.00	\$135.00	\$135.00

**\*\* Please measure and confirm head size of valves when ordering.**

Originally, measurements are as follow:

Mk1/2 - Inlet Valves 36.5mm, Exhaust Valves 30mm

Mk3 - Inlet Valves 39.7mm, Exhaust Valves 34.5mm

<b>Part Description</b>	<b>Unit</b>	<b>MK1</b>	<b>MK2</b>	<b>MK3</b>
Timing Chain	each	\$35.00	\$35.00	\$35.00
Ring Gear - Flywheel	each	\$195.00	\$195.00	\$125.00
Flywheel Lock Tab Plate	each	\$15.00	\$15.00	\$15.00
Oil Pressure Switch	each	\$12.00	\$12.00	\$12.00
Sump Plug (includes washer)	each	\$20.00	\$20.00	\$20.00
Engine Breather Pipe Elbow	each	—	—	\$35.00
Rocker Shaft	each	\$195.00	\$195.00	\$195.00
Rocker Shaft with Rocker Arms	each	\$450.00	\$450.00	\$450.00
Rocker Arm	each	\$33.50	\$33.50	\$33.50

### **Engine Mounts**

Engine Mount - Round Type - 51/53	each	\$45.00	—	—
Engine Mount - Square Type - 53/56	each	\$75.00	—	—
Engine Mount	each	—	\$65.00	\$65.00

### **Fuel Pumps**

Fuel & Vacuum Pump (includes gasket) <i>*Reconditioned / Change Over</i>	C/O(4)	\$295.00	\$295.00	—
Fuel Pump Repair Kit	each	\$110.00	\$110.00	\$55.00
Fuel Pump Blanking Plate	each	\$30.00	\$30.00	\$30.00
Gasket - Fuel Pump	each	\$2.00	\$2.00	\$2.00
Vacuum Pump Repair Kit	each	\$110.00	\$110.00	—
Flexible Fuel Line	each	\$85.00	—	—
Inlet Manifold Studs	each	\$5.00	\$5.00	\$5.00

### **Fuel Caps**

Sedan - Plain Chrome Style - Non Locking	each	\$55.00	\$55.00	\$55.00
Sedan - Original Style with Ford Script <a href="#">SEE PHOTO</a>	each	\$125.00	\$125.00	\$125.00
Ute - Plain Chrome Style - Locking	each	—	\$38.50	—
Ute - Plain Chrome Style - Non Locking	each	—	\$35.00	—

<b>Part Description</b>	<b>Unit</b>	<b>MK1</b>	<b>MK2</b>	<b>MK3</b>
<b>Carburetor</b>				
Hose - Carburetor to Air Cleaner	each	—	\$45.00	—
Carburetor Overhaul Kit	each	\$95.00	\$250.00	\$250.00
Carburetor Overhaul Kit - Consul Mk2 EARLY – 34WIA	each	—	\$250.00	—
Carburetor Overhaul Kit - Consul Mk2 LATE – VN34	each	—	\$95.00	—
Carburetor Overhaul Kit - Zodiac Mk3 (42WIA)	each	—	—	\$115.00
Carburetor Needle & Seat	each	\$45.00	\$75.00	\$75.00
Carburetor Gasket Kit (with insulator block)	each	\$25.00	\$95.00	\$95.00

## Exhaust

<b>Part Description</b>	<b>Unit</b>	<b>MK1</b>	<b>MK2</b>	<b>MK3</b>
Extractors (Includes Spacer Block Set)	set	\$850.00	\$850.00	\$850.00
Extractors Spacer Block Set	set	\$75.00	\$75.00	\$75.00
Exhaust Manifold To Pipe Ring	each	\$30.00	\$30.00	\$30.00
Exhaust Manifold (Hockey Stick)	each	\$250.00	\$250.00	\$250.00
Muffler - Mk2 Consul - Sedan Only (Original Type) <i>Will Fit Mk2 Zephyr with Modification</i>	each	—	\$95.00	—

# Starter Motor & Generator

Part Description	Unit	MK1	MK2	MK3
Starter Motor <i>*Reconditioned / Change Over</i>	C/O(3)	\$295.00	\$295.00	\$295.00
Pinion - Starter Motor	each	\$65.00	\$65.00	\$65.00
Starter Motor Brush Set	set	\$20.00	\$20.00	\$20.00
Starter Solenoid <a href="#">PHOTO</a>	each	\$115.00	\$115.00	\$115.00
Generator Brush Set	set	\$15.00	\$15.00	\$15.00
Generator Rear Bush	each	\$10.00	\$10.00	\$10.00
Generator - New	each	\$450.00	\$450.00	\$450.00
Generator Regulator - New	each	\$125.00	\$125.00	\$125.00
Dynamator C39/C40 Positive OR Negative Earth ***	each	\$495.00	\$495.00	\$495.00

**\*\*\* PLEASE ADVISE IF YOU REQUIRE NEG OR POS EARTH :** The Dynamator is an alternator in the same shape as the original generator. It will fit onto the original brackets. Use and fit the old generator pulley to the unit and modify the wiring as per instructions included with dynamator.

## Change Over Core Deposits

Items requiring a change over unit are displayed as C/O(2), C/O(3) or C/O(4)

A deposit will be charged for all Change Over units when core units are not supplied at the time of purchase.

All deposits are refunded when the change over unit is received from the customer (if returned within 30 days).

Deposit required :

Change Over (2) = C/O(2) = \$30.00, Change Over (3) = C/O(3) = \$50.00, Change Over (4) = C/O(4) = \$100.00

# Windscreen Wipers

Part Description	Unit	MK1	MK2	MK3
Wiper Blade Assembly - Stainless Steel	each	\$35.00	\$35.00	\$45.00
Wiper Arm	each	\$55.00	\$55.00	\$55.00
Electric Windscreen Washer Kit - Bag Type	each	\$39.00	\$39.00	\$39.00

# Tune Up & Service

Part Description	Unit	MK1	MK2	MK3
Spark Plugs	each	\$6.00	\$6.00	\$6.00
Contact Points <b>##</b>	each	\$25.00	\$25.00	\$12.00
Rotor Button	each	\$12.00	\$12.00	\$12.00
Condenser	each	\$12.00	\$12.00	\$12.00
Distributor Cap - 4 Cyl.	each	\$45.00	\$45.00	\$45.00
Distributor Cap - 6 Cyl.	each	\$55.00	\$55.00	\$45.00
Distributor – Points Type - New	each	\$195.00	\$195.00	\$195.00
Distributor Low Tension Lead Assembly	each	—	—	\$35.00
Electronic Ignition Kit - Positive Earth	each	\$135.00	\$135.00	\$115.00
Electronic Ignition Kit - Negative Earth	each	\$135.00	\$135.00	\$115.00
Ignition Coil <b>^^</b>	each	\$65.00	\$65.00	\$65.00
Universal Spark Plug Lead Kit <b>^^</b>	each	\$45.00	\$45.00	\$45.00
Filter - Oil	each	\$32.00	\$32.00	\$32.00
Filter – Oil ( <i>Z89A – Spin On Filter – Suits Kit below</i> )	each	\$10.00	\$10.00	\$10.00
Oil Filter Kit <i>– to convert to a spin on Filter, includes the Z89A Filter.</i>	each	\$245.00	\$245.00	\$245.00
Filter - Air	each	—	—	\$19.50
Filter – Fuel - Plastic	each	\$6.00	\$6.00	\$6.00
Filter – Fuel - Metal	each	\$18.50	\$18.50	\$18.50

**\*\* NOTE :** It is essential to establish if you require positive or negative earth and advise us correctly

**## Consul & Zephyr Mk1 Points** - When ordering points for these models it is essential to establish the type of points fitted. Early points have slotted springs and are known as **Side Fitting Types** - Suit DM6 Distributor. Late points have looped springs and are known as **Upright Fitting Types** - Suit DM6A Distributor

**^^ NOTE :** Some coils have “screw in” lead type & some have “push in” lead type. Please advise when ordering coils and leads what type you require.

# Cooling System

Part Description	Unit	MK1	MK2	MK3
Water Pump *Reconditioned / Change Over (includes gasket) <b>** Mk2 &amp; Mk3 Please advise if your water pump is running a heater (some do, some do not)</b>	C/O(3)	\$195.00	\$195.00	\$195.00
Water Pump - Repair Kit	each	\$125.00	\$125.00	\$125.00
Water Pump - Seal	each	\$25.00	\$25.00	\$25.00
Gasket - Water Pump	each	\$5.00	\$5.00	\$5.00
Thermostat	each	\$15.00	\$15.00	\$15.00
Gasket - Thermostat Housing	each	\$4.00	\$4.00	\$4.00
Radiator Hose - Top - 4 Cyl. & 6 Cyl.	each	\$29.50	\$29.50	\$29.50
Radiator Hose - Bottom - 4 Cyl.	each	\$35.00	\$35.00	\$35.00
Radiator Hose - Bottom - 6 Cyl.	each	\$39.50	\$35.00	\$35.00
Radiator Cap	each	\$12.00	\$12.00	\$12.00
Fan Belt (Mk1 51/54 15mm wide)	each	\$20.00	—	—
Fan Belt (Mk1 54/56 11mm wide)	each	\$12.00	\$12.00	\$12.00
Bypass Tube Kit	each	—	\$25.00	\$25.00

### Change Over Core Deposits

Items requiring a change over unit are displayed as C/O(2), C/O(3) or C/O(4)

A deposit will be charged for all Change Over units when core units are not supplied at the time of purchase.

All deposits are refunded when the change over unit is received from the customer (if returned within 30 days).

Deposit required :

Change Over (2) = C/O(2) = \$30.00, Change Over (3) = C/O(3) = \$50.00, Change Over (4) = C/O(4) = \$100.00

# Transmission

Part Description	Unit	MK1	MK2	MK3
Gearbox - Small Parts Kit **	each	\$330.00	\$320.00	\$360.00
Gearbox - Small Parts Kit with Overdrive**	each	\$355.00	\$355.00	—
<u>Bearing - Front</u>	each	\$45.00	\$45.00	\$45.00
<u>Bearing - Rear</u>	each	\$45.00	\$45.00	\$75.00
Bearing - Overdrive	each	\$45.00	\$45.00	—
<u>Bearing - Main Shaft Pilot</u>	each	\$40.00	\$40.00	\$110.00
Syncro Rings	each	\$42.00	\$42.00	\$75.00
Syncro Hub Assembly	each	\$195.00	\$195.00	—
Syncro Hub Blocker Bar	each	\$8.00	\$8.00	—
Syncro Hub Blocker Bar Spring	each	\$8.00	\$8.00	—
Input Shaft	each	\$195.00	\$195.00	—
First & Reverse Sliding Gear – 3 speed	each	\$125.00	\$125.00	—
Second Gear – 3 Speed	each	\$145.00	\$145.00	—
Cluster Gear – With Teeth = 34-28-19-14	each	\$275.00	\$275.00	—
Cluster Gear – With Teeth = 35-28-17-14 <i>Gives a lower 1<sup>st</sup> gear ratio</i>	each	\$225.00	\$225.00	—
<u>Layshaft</u>	each	\$65.00	\$65.00	—
<u>Layshaft Rollers</u>	set	\$65.00	\$65.00	\$70.00
Layshaft Thrust Washer - Front (set of 3)	set	\$75.00	\$75.00	—
<u>Gasket Kit</u>	each	\$25.00	\$25.00	\$25.00
<u>Seal - Front Input</u>	each	—	—	\$15.00
<u>Seal - Ex/Housing</u>	each	\$25.00	\$15.00	\$15.00
<u>Seal - Selector Shaft</u>	each	\$10.00	\$10.00	\$10.00
Bush - Selector Linkage	each	\$15.00	\$15.00	\$15.00

\*\* Underlined Parts are Included in Small Parts Kit.  
Kit for overdrive models also include the overdrive bearing

<b>Part Description</b>	<b>Unit</b>	<b>MK1</b>	<b>MK2</b>	<b>MK3</b>
Mount - Gearbox - Mk1 Round - 51/53 (1 per Car)	each	\$25.00	—	—
Mount - Gearbox - Mk1 Square - 53/- (2 per Car)	each	\$35.00	—	—
Mount - Gearbox	each	—	\$95.00	\$95.00
Gearbox Crossmember Bush Kit	kit	—	—	\$55.00
Speedo Cable - Manual <span style="color: red;">#</span> <b>Check the speedo has not seized BEFORE fitting new cable</b>	each	\$75.00	\$75.00	\$65.00
Speedo Cable Adapter - Manual <span style="color: red;">#</span>	each	—	\$35.00	—
Universal Joint - Tailshaft	each	\$35.00	\$35.00	\$35.00
Inhibitor Switch	each	—	—	\$75.00
Seal - Front BW Auto	each	—	—	\$15.00
Seal – Front DG Auto	each	—	\$39.50	—
Auto Pan Gasket	each	—	—	\$15.00
Speedo Cable - Auto <span style="color: red;">#</span> <b>Check the speedo has not seized BEFORE fitting new cable</b>	each	—	\$75.00	\$65.00
Speedo Cable Adapter - Auto <span style="color: red;">#</span>	each	—	\$35.00	—
Auto Kick-Down Cable	each	—	—	\$125.00

**Notes:**

# Our Mk2 Speedo Cable and Adapter Replace Original Speedo Cable. Future Replacement Requires Our Mk2 Speedo Cable Only.

*Some parts in this catalogue are imported from overseas, and prices may change due to the fluctuating currency exchange rate and changing supplier & freight costs.*

*If you are emailing an inquiry, please include :*

**Your details** : Name, Phone Number & Postcode (& Country if outside Australia) for delivery.

**Vehicle details** relevant to inquiry : Model, Year, Engine Size, Body Type (eg. 2 door, 4 door, Ute), Transmission, etc

*Some parts in this catalogue are imported from overseas, and prices may change due to the fluctuating currency exchange rate and charges from suppliers.*

*Some parts in this catalogue are remanufactured either in Australia or overseas. Sometimes new items become available, sometimes current items are discontinued. Whilst we endeavour to keep the catalogue up to date with any stock and price changes, sometimes we are unaware of changes until we are in communication with our suppliers.*

# Brake

Part Description	Unit	MK1	MK2	MK3
Brake Shoes - Front (set of 4 shoes) <i>*Reconditioned / Change Over</i>	C/O(2)	\$95.00	\$95.00	—
Brake Shoes - Rear (set of 4 shoes) <i>*Reconditioned / Change Over</i> <b># see note</b>	C/O(2)	\$95.00	\$95.00	\$95.00
Disc Pads (set of 4 pads)	set	—	\$95.00	\$95.00
Brake Caliper - Repair Kit	each	—	\$35.00	\$35.00
Brake Caliper Piston	each	—	\$30.00	\$30.00
Brake Caliper - Reconditioned <b>(We require your existing calipers to recondition)</b>	pair	—	\$440.00	\$440.00
Wheel Cylinder - Front	each	\$75.00	\$75.00	—
Wheel Cylinder - Repair Kit - Front	each	\$15.00	\$15.00	—
Wheel Cylinder - Repair Kit – Rear <b>##see note for Mk3</b>	each	\$19.50	\$19.50	\$19.50
Wheel Cylinder – Rear – New <b>###see note for Mk1</b>	each	\$95.00	\$75.00	\$145.00
Brake Master Cylinder <i>*Reconditioned / Change Over</i>	C/O(3)	—	—	\$275.00
Brake Master Cylinder – New – Budget ( <i>plastic lid</i> )	each	—	\$75.00	—
Brake Master Cylinder – New – Girling ( <i>metal lid</i> )	each	—	\$225.00	—
Brake Master Cylinder - Repair Kit	each	\$35.00	\$25.00	—
Brake Master Cylinder - Repair Kit - 7/8 or 13/16 Bore	each	—	—	\$25.00
Brake Master Cylinder - Cap – Small (incl. seal)	each	—	\$25.00	\$25.00
Brake Master Cylinder - Cap – Large (incl. seal)	each	—	\$35.00	\$35.00
Brake Master Cylinder - Cap – Small - Seal	each	—	\$5.00	\$5.00
Brake Master Cylinder - Cap – Large - Seal	each	—	\$10.00	\$10.00
Brake Booster <i>*Reconditioned / Change Over</i>	C/O(4)	—	—	\$695.00
Remote Brake Booster	each	\$175.00	\$175.00	—

## NOTES

**# Mk2 Rear Brake Shoes** - Please Advise if Snail Adjusting Cam is at the Top or Bottom of the Backing Plate. Brake Shoes do Differ.

**## Mk3 Rear Wheel Cylinder Repair Kits** some cylinders are 3/4, and some are 7/8. Please check and order appropriate size kit.

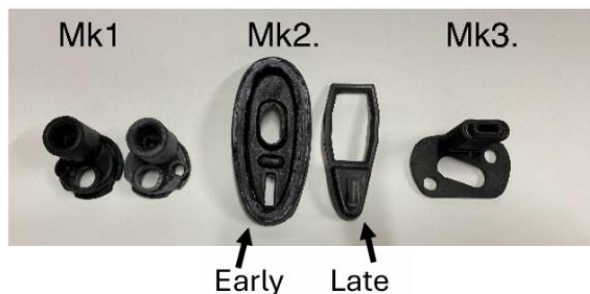
**### Mk1 Rear Wheel Cylinders** do not come with cup expanders or spring. You need to re-use the ones from your old Rear Wheel Cylinder [MORE DETAILS](#)

Part Description	Unit	MK1	MK2	MK3
Brake Stop Light Switch	each	\$29.50	\$29.50	\$29.50
Brake Pedal Pad - Manual	each	\$10.00	\$10.00	\$10.00
Brake Pedal Pad – Auto	each	—	\$75.00	\$75.00
Brake Hose - Front	each	\$45.00	\$45.00	\$45.00
Brake Hose - Rear	each	\$45.00	\$45.00	\$45.00
Hand Brake Cable - Front	each	\$125.00	\$125.00	\$25.00
Hand Brake Cable - Intermediate	each	—	—	\$35.00
Hand Brake Cable - Rear	each	\$65.00	\$325.00	\$325.00
Handbrake Cable Guide Pad	each	—	\$12.00	—
		<a href="#">SEE PHOTO</a> 2 are required per car		
Dust Boot - Brake Wheel Cylinder - Hand Brake Lever	pair	\$30.00	\$30.00	\$40.00
		<b>**Please refer to these photos and advise which dust boot you require. <a href="#">SEE PHOTO</a></b>		
Dust Boot - Brake Wheel Cylinder - Hand Brake Lever Metal Retaining Plate	pair	—	—	\$40.00

### Zephyr

#### Dust Boot

(Brake Wheel Cylinder - Hand Brake Lever)



#### Change Over Core Deposits

Items requiring a change over unit are displayed as C/O(2), C/O(3) or C/O(4)

A deposit will be charged for all Change Over units when core units are not supplied at the time of purchase. All deposits are refunded when the change over unit is received from the customer (if returned within 30 days).

Deposit required :

Change Over (2) = C/O(2) = \$30.00, Change Over (3) = C/O(3) = \$50.00, Change Over (4) = C/O(4) = \$100.00

# Clutch

Part Description	Unit	MK1	MK2	MK3
Clutch Kit <i>*Reconditioned / Change Over</i>	C/O(3)	\$465.00	\$465.00	\$465.00
Clutch Pressure Plate <i>*Reconditioned / Change Over</i>	C/O(3)	\$195.00	\$195.00	\$195.00
Clutch Driven Plate <i>*Reconditioned / Change Over</i>	C/O(3)	\$175.00	\$175.00	—
Clutch Driven Plate	each	—	—	\$195.00
Clutch Release Bearing	each	\$95.00	\$95.00	\$95.00
Clutch Master Cylinder <b>**</b> <i>*Reconditioned / Change Over</i>	C/O(3)	—	—	\$195.00 <b>**</b>
Clutch Master Cylinder – New – Girling ( <i>metal lid</i> ) <b>**</b>	each	—	\$225.00	\$225.00 <b>**</b>
Clutch Master Cylinder – New – Budget ( <i>plastic lid</i> ) <b>^</b>	each	—	\$75.00	\$75.00 <sup>^</sup>
Clutch Master Cylinder - Repair Kit	each	\$35.00	\$25.00	—
Clutch Master Cylinder - Repair Kit - .70 or .75 Bore	each	—	—	\$25.00
Clutch Master Cylinder - Cap (incl. seal)	each	—	\$25.00	\$25.00
Clutch Master Cylinder - Cap - Seal	each	—	\$5.00	\$5.00
Clutch Slave Cylinder - New	each	\$145.00	—	—
Clutch Slave Cylinder – New (Mk2 ONLY) <i># Will fit Mk3 with a small modification</i>	each	—	\$175.00	<b>#</b> \$175.00
Clutch Slave Cylinder - Repair Kit	each	\$19.50	\$19.50	\$19.50
Clutch Slave Cylinder - Circlip	each	—	\$3.00	\$3.00
Clutch Pedal Pad	each	\$10.00	\$10.00	\$10.00
Clutch Flexible Hose	each	\$45.00	\$45.00	\$45.00
Bearing - Crankshaft Spigot	each	\$12.00	\$12.00	\$12.00

**\*\*** These fit the LATER Mk3 that have a 45° angled type cylinder

**^** These fit the EARLY Mk3 that have a 90° right angled type cylinder

# Suspension & Steering - Front End

<b>Part Description</b>	<b>Unit</b>	<b>MK1</b>	<b>MK2</b>	<b>MK3</b>
Strut Top Bearing	each	\$145.00	\$145.00	\$145.00
Rubber Cap - Strut Top Mounting	pair	\$35.00	\$35.00	\$35.00
Drag Link Assembly	each	—	\$195.00	\$195.00
Drag Link Repair Kit (Mk3 02/62 to 6/64)	each	—	\$65.00	\$65.00
Idler Arm Lock Washer	each	\$5.00	\$5.00	—
Front End Pivot and Lock Washer	set	\$75.00	\$75.00	\$75.00
Sway Bar Outer Lock Washer (2 required per car)	each	\$8.00	\$8.00	\$8.00
Sway Bar Inner Lock Washer (2 required per car)	each	\$8.00	\$8.00	\$8.00
Sway Bar to Chassis Lock Tab (4 required per car)	each	\$6.00	\$6.00	\$6.00
Tie Rod End – Outer (Includes Boot)	each	\$95.00	—	\$95.00
Tie Rod End - Inner (Includes Boot)	each	\$65.00	—	\$95.00
Tie Rod End - Outer 14 mm. (Early Series) (Includes Boot)	each	—	\$95.00	—
Tie Rod End - Inner 14 mm. (Early Series) (Includes Boot)	each	—	\$65.00	—
Tie Rod End - Outer 18 mm. (Late Series) (Includes Boot)	each	—	\$95.00	—
Tie Rod End - Inner 18 mm. (Late Series) (Includes Boot)	each	—	\$95.00	—
Tie Rod End - Boot	each	\$6.00	\$6.00	\$6.00

Part Description	Unit	MK1	MK2	MK3
Track Control Arm – Mk2 - NEW	each	—	\$175.00	—
Track Control Arm – Mk3 <i>*Reconditioned / Change Over</i>	each	—	—	\$175.00
Track Control Arm - Ball Joint (Includes Boot)	each	\$95.00	—	—
Track Control Arm - Ball Joint Repair Kit <b>(Note #)</b> (Includes Boot)	each	—	\$195.00	\$110.00
Ball Joint Boot	pair	\$15.00	\$15.00	\$15.00
Bush - Track Control Arm - Inner – <b>Rubber</b> (2 per car)	each	\$40.00	\$40.00	\$40.00
Bush - Track Control Arm - Outer – <b>Rubber</b> (4 per car)	each	\$25.00	\$25.00	\$25.00
Bush - Sway Bar - Front Mount – <b>Rubber</b> (4 per car)	each	\$12.00	\$12.00	\$12.00
Bush Set - Front End - <b>Rubber</b> - 10 Bushes	kit	\$220.00	\$220.00	\$220.00
Bush - Track Control Arm - Inner - <b>Urethane</b>	kit	\$55.00	\$55.00	\$55.00
Bush - Track Control Arm - Outer - <b>Urethane</b>	kit	\$55.00	\$55.00	\$55.00
Bush - Sway Bar - Front Mount - <b>Urethane</b>	kit	\$45.00	\$45.00	\$45.00
Bush Set - Front End - <b>Urethane</b> - 10 Bushes	kit	\$155.00	\$155.00	\$155.00
Sway Bar Boots	pair	\$20.00	\$20.00	\$20.00
Steering Box – Reconditioned <i>**Customer is required to supply their old unit for reconditioning</i>	each	\$550.00	\$550.00	\$550.00
Steering Box - Peg & Ball Kit	each	\$65.00	—	—
Steering Box Seal	each	\$3.00	\$12.00	\$12.00

**Note # : Mk3 Ball Joint Repair Kits**

Early ball joints had metal seats & late ball joints had plastic seats. Kits will not inter-change.

When ordering, it is most helpful when you quote

- Vehicle Model (eg Escort MkI, Zephyr MkII)
- Vehicle Year (and even the month) of manufacture
- Engine Size
- Transmission Type (Manual or Automatic)
- Body Type (eg. 2 door, 4 door, ute, panel van)
- Any relevant modifications

Supplying all of this information will assist us to identify the correct part for your model car.

## Suspension - Rear End

Part Description	Unit	MK1	MK2	MK3
Rear Shocker Link	each	\$85.00	\$85.00	\$85.00
Bush - Rear Spring - Front Eye - Steel & Rubber 1951-54 2 Bushes per Car	each	\$45.00	—	—
Bush - Rear Spring - Front Eye - Rubber 1954-56 4 Bushes per Car	each	\$12.50	—	—
Bush - Rear Spring - Front Eye - Urethane 1954-56	kit	\$35.00	—	—
Bush - Rear Spring - Front Eye – Rubber 4 Bushes per Car	each	\$18.50	—	\$12.00
Bush - Shackle - Lower - Rubber - 4 Bushes per Car	each	\$18.50	—	\$9.00
Bush - Shackle - Upper - Rubber - 4 Bushes per Car	each	\$18.50	—	\$9.00
Bush - Rear Spring - Front Eye - Urethane	Kit	—	\$35.00	\$95.00
Bush - Shackle - Lower & Upper - Urethane	Kit	\$70.00	\$70.00	\$85.00
Bush Set - Rear End - Urethane	Kit	—	\$105.00	\$180.00
Rear Spring - Sandwich Pad - Urethane	kit	—	\$95.00	\$95.00
Shackle	each	\$25.00	—	\$25.00

## Front & Rear Axle

Part Description	Unit	MK1	MK2	MK3
Bearing & Seal Kit - Front Hub	each	\$85.00	\$75.00	\$75.00
Hub Seal - Front	each	—	\$15.00	\$15.00
Hub Seal – Front EARLY 1951-53 - 1 3/8" ID <b>#NOTE</b>	each	\$18.00	—	—
Hub Seal – Front LATE 1953-55 - 1 9/16" ID <b>#NOTE</b>	each	\$35.00	—	—
Front Hub Grease Cap	each	—	\$25.00	\$25.00
Bearing - Rear Hub	each	\$45.00	\$45.00	\$45.00
Hub Seal - Rear	each	\$25.00	\$25.00	\$25.00
Rear Hub Nut	each	—	\$35.00	\$35.00
Hub Nut Lock Washer - Rear	each	\$8.00	\$8.00	\$8.00

**#NOTE – Please confirm the size of Hub Seal required**

Gasket - Rear Hub to Axle	each	\$5.00	\$5.00	\$5.00
Gasket - Diff Centre	each	\$10.00	\$10.00	\$10.00
Seal - Diff Pinion	each	\$45.00	\$55.00	\$55.00
Seal - Inner Axle Housing	each	\$15.00	\$15.00	\$25.00
Rear Axle Bump Stops – Early or Late <a href="#">SEE PHOTO</a>	pair	\$40.00	\$40.00	\$40.00
Rear Axle - S/H	each	\$75.00	—	—
Diff Bearings	set	\$425.00	\$250.00	\$250.00
Wheel Nuts – STD (Set of 20)	set	\$35.00	\$35.00	\$35.00

## Lighting & Electrical

Part Description	Unit	MK1	MK2	MK3
Head Light - Sealed Beam <i>**Wiring Plug Also Required</i>	each	\$30.00	\$30.00	\$30.00
Head Light - Semi-Sealed Beam Headlight – Lucas - Takes Original Globe	each	\$115.00	\$115.00	\$115.00
Head Light - Semi-Sealed Beam Headlight - H4 – Curved Glass <i>**Wiring Plug Also Required</i>	each	\$30.00	\$30.00	\$30.00
Head Light Wiring Plug	each	\$10.00	\$10.00	\$10.00
Head Light Bowl / Bucket Assembly ( <i>Round 7"</i> )	pair	\$90.00	\$90.00	\$90.00
Globe - Head Light	each	\$10.00	\$10.00	\$10.00
Globe - Head Light - H4	each	\$10.00	\$10.00	\$10.00
Globe - Front Park/Indicator	each	\$3.00	\$3.00	\$3.00
Globe -Rear Indicator	each	\$3.00	\$3.00	\$3.00
Globe - Rear Brake/Tail Light	each	\$3.00	\$3.00	\$3.00

<b>Part Description</b>	<b>Unit</b>	<b>MK1</b>	<b>MK2</b>	<b>MK3</b>
Front Indicator/Park Lamp Assembly	each	\$65.00	—	—
Front Indicator/Park Lamp Boot	each	\$15.00	—	—
Lens - Front Indicator/Park Light - Round Type	each	\$18.00	\$55.00	\$55.00
Lens - Front Indicator/Park Light - Oval Type	each	—	\$55.00	—
Lens - Rear Indicator Light (Mk2 Early Series)	each	—	\$45.00	—
Lens - Rear Indicator Light (Mk2 Late Series) <b># NOTE</b>	each	—	\$35.00	—
Lens - Rear Indicator Light (Mk2 Consul 56-2/59)	each	—	\$52.50	—
Lens - Rear Indicator Light (Mk2 Consul 2/59 on)	each	—	\$75.00	—
Lens - Rear Indicator Light	each	—	—	\$39.50
Lens - Rear Indicator Light (Mk3 Zodiac)	each	—	—	\$75.00
Lens - Rear Indicator Light - Ute (Butler Type)	each	—	\$52.50	—
Lens - Rear Indicator Light - Ute (Lucas Type)	each	—	\$39.50	—
Lens - Brake/Tail Light	each	\$45.00	—	\$95.00
Lens - Brake/Tail Light (Mk2 Early Series)	each	—	\$65.00	—
Lens - Brake/Tail Light (Mk2 Late Series) <b># NOTE</b>	each	—	\$49.50	—
Lens - Brake/Tail Light (Mk2 Consul 56-2/59)	each	—	\$73.50	—
Lens - Brake/Tail Light (Mk2 Consul 2/59 on)	each	—	\$45.00	—
Lens - Brake/Tail Light - Ute (Butler Type)	each	—	\$73.50	—
Lens - Brake/Tail Light - Ute (Lucas Type)	each	—	\$39.50	—
Lens – Reflector – Round Type (1956 – 2/1959) & All Utes	each	—	\$45.00	—
Lens - Interior Light	each	—	—	\$35.00
Wiring Loom Retainer - Two Prong Type – Grey OR Black	each	—	—	\$2.00
Indicator Flasher Can	each	\$20.00	\$20.00	\$20.00
Ignition Switch with Key	each	—	—	\$65.00
Headlamp Dip Switch	each	\$45.00	—	—
Brake Stop Light Switch	each	\$26.50	\$26.50	\$26.50

**# NOTE : The old metal brackets need to be used when fitting**

# Rubber Seals, Weather Strips & Body Parts

Part Description	Unit	MK1	MK2	MK3
Seal - Front Windscreen ***	each	\$185.00	—	\$235.00
Seal - Front Windscreen - Mk2 Early Series 56-2/59 <i>Seal (includes Locking Strip)</i>	each	—	\$195.00	—
Seal - Front Windscreen - Mk2 Late Series 2/59-62	each	—	\$195.00	—
Seal - Rear Windscreen ***	each	\$175.00	—	\$175.00
Seal - Rear Windscreen - Mk2 Early Series 56-2/59 <i>Seal (includes Locking Strip)</i>	each	—	\$195.00	—
Seal - Rear Windscreen - Mk2 Late Series 2/59-62 <i>Seal (includes Locking Strip)</i>	each	—	\$225.00	—
Seal - Rear Windscreen (Ute Only)	each	—	\$145.00	—
Seal - Front Door	each	\$35.00	\$65.00	\$65.00
Seal - Rear Door	each	\$35.00	\$65.00	\$65.00
Seal - Rear Door - Mk ZODIAC	each	—	—	\$85.00
Seal - Front Quarter Window	pair	—	\$280.00	\$280.00
Seal - Rear Quarter Window - Sedan	pair	—	\$250.00	—
Seal - Rear Quarter Window - Wagon	pair	—	\$250.00	—
Seal - Rear Quarter Window - Ute Mk2	pair	—	\$125.00	—
Seal - Boot	each	\$55.00	\$65.00	\$65.00
Seal Kit – Station Wagon Tail gate	kit	—	\$145.00	—
Seal - Head Light Mounting – 2 Adjuster Type	pair	\$30.00	—	\$30.00
Seal - Head Light Mounting – 3 Adjuster Type	pair	\$45.00	—	\$45.00

## \*\*\*Mk3 Zephyr

**Front Windscreen Rubber** – Has a narrow groove to take chrome moulding & moulded corners

**Rear Screen Rubber** – Has Wide channel to take chrome & moulded corners

## \*\*\*Mk3 Zodiac

**Front Windscreen Rubber** – Has a narrow groove to take chrome moulding & moulded corners

**Rear Screen Rubber** – Has Wide channel to take chrome & **NO** moulded corners as per original

Weather Strip - Front Door Outer	each	\$55.00	\$49.50	\$35.00
Weather Strip - Rear Door Outer	each	\$55.00	\$49.50	\$35.00
Weather Strip - Front Door Inner	each	\$55.00	\$49.50	\$30.00
Weather Strip - Rear Door Inner	each	\$55.00	\$49.50	\$30.00
Weather Strip Clip	each	—	—	\$3.50
Bailey Channel (Glass Runner) FRONT	each	\$45.00	\$35.00	\$35.00
Bailey Channel (Glass Runner) REAR	each	\$45.00	\$35.00	\$45.00
Pinchweld for Door Opening	each	—	—	\$45.00
Moulding Clip – Round Type (12.3mm)	each	—	\$2.00	—
Moulding Clip – Rectangular Type	each	—	\$3.50	—
Bonnet Bump Stop (Round)	pair	\$15.00	\$15.00	\$15.00
Bonnet Bump Stop Kit (Incl 2 Front + 2 Side Bump Stops)	each	—	\$50.00	—
Bonnet Bump Stop Kit (Incl 2 Front + 4 Side Bump Stops)	each	—	\$85.00	\$85.00
Door Check Rubber	each	\$8.00	\$8.00	—
Grommet – Inner Skirt – Brake Line	pair	—	—	\$30.00
Fuel Filler Grommet – # Mk2 UTE ONLY	each	\$35.00	# \$35.00	—
Front Park Lamp Boots	pair	\$30.00	\$70.00	—
Badge - Left Hand Guard - Rectangular “FORD”	each	—	—	\$85.00
Badge – Rear ¼ Panel “ZEPHYR”	each	—	\$145.00	—
Badge – Boot “ZEPHYR”	each	—	\$135.00	—
Bumperettes UTE	pair	—	\$295.00	—
Bumper Bar Bolt - Chrome	each	—	\$9.50	\$9.50
Door Mirror – Chrome – Universal <a href="#">SEE PHOTO</a> Mounting Holes - 102mm hole centre to hole centre	each	\$65.00	\$65.00	\$65.00

**Carpet Set** – Includes Front & Rear Floors set — — \$400.00

**MK3 – MANUAL – ZEPHYR / ZODIAC ONLY**

Please advise : Colour, Auto or Manual

[See HERE for Colours](#) – Please allow for difference caused by camera flash & individual device screens. Available in Plush or Loop.

# Rubber Seal Kits

<b>Zephyr Mk1</b>	<b>\$1180</b>
<b>Contents</b>	
1	Front Windscreen Seal
1	Rear Windscreen Seal
4	Door Seals
4	Door Belts - Outer
4	Door Belts - Inner
4	Bailey Channel (Glass Runner)
1	Boot Seal

Our Rubber Kits can be purchased as complete Kits, or we can customise a kit with only the parts you require.

Confused by the different rubber seals ?  
[See here for details](#)

## **Mk2 \*\*\*PLEASE ADVISE IF YOUR VEHICLE IS EARLY OR LATE SERIES**

<b>ZEP3</b>	<b>Zephyr Mk2 1956/59 Early Series SEDAN</b>	<b>or</b>	<b>\$1770</b>
<b>ZEP5</b>	<b>Zephyr Mk2 1959/62 Late Series SEDAN</b>		<b>\$1800</b>
<b>***PLEASE ADVISE IF YOUR VEHICLE IS EARLY OR LATE SERIES</b>			
<b>Contents</b>			
1	Front Windscreen Seal		
1	Rear Windscreen Seal		
2	Front 1/4 Vent Window Seals		
2	Rear 1/4 Window Seals		
4	Door Seals		
4	Door Belts - Inner		
4	Door Belts - Outer		
4	Bailey Channels (Glass Runner)		
1	Boot Seal		

**Zephyr Mk2 1956/59 Early Series WAGON or \$1665**

**Zephyr Mk2 1959/62 Late Series WAGON \$1665**

**Contents**

**\*\*\*PLEASE ADVISE IF YOUR VEHICLE IS EARLY OR LATE SERIES**

- 1 Front Windscreen Seal
- 2 Front 1/4 Vent Window Seals
- 2 Rear 1/4 Window Seals
- 4 Door Seals
- 4 Door Belts - Inner
- 4 Door Belts - Outer
- 4 Bailey Channels (Glass Runner)
- 1 Tail Gate Seal Kit

**ZEP7 Zephyr Mk2 1956/59 Early Series UTE \$1140**  
**OR 1959/62 Late Series UTE \$1140**

**\*\*\*PLEASE ADVISE IF YOUR VEHICLE IS EARLY OR LATE SERIES**

**Contents**

- 1 Front Windscreen Seal
- 1 Rear Windscreen Seal
- 2 Front 1/4 Vent Window Seals
- 2 Rear 1/4 Window Seals
- 2 Front Door Seals
- 2 Door Belts - Inner
- 2 Door Belts - Outer
- 2 Bailey Channels (Glass Runner)

*Our Rubber Kits can be purchased as complete Kits, or we can customise a kit with only the parts you require.*

*Please inquire / advise at time of ordering*

**ZEP11 Zephyr Mk3 1962/66**

**\$1615**

**Contents**

- 1 Front Windscreen Seal
- 1 Rear Windscreen Seal
- 2 Front 1/4 Vent Window Seals
- 4 Door Seals
- 4 Pinchweld
- 4 Door Belts - Inner
- 4 Door Belts - Outer
- 4 Bailey Channel (Glass Runner)
- 1 Boot Seal

**\*\*\*Mk3 Zephyr**

**Front Windscreen Rubber** – Has a narrow groove to take chrome moulding & moulded corners

**Rear Screen Rubber** – Has Wide channel to take chrome & moulded corners

*Our Rubber Kits can be purchased as complete Kits, or we can customise a kit with only the parts you require.*

*Please inquire / advise at time of ordering*

**Zodiac Mk3 1962/66**

**\$1655**

**Contents**

- 1 Front Windscreen Seal
- 1 Rear Windscreen Seal
- 2 Front 1/4 Vent Window Seals
- 4 Door Seals
- 4 Pinchweld
- 4 Door Belts - Inner
- 4 Door Belts - Outer
- 4 Bailey Channel (Glass Runner)
- 1 Boot Seal

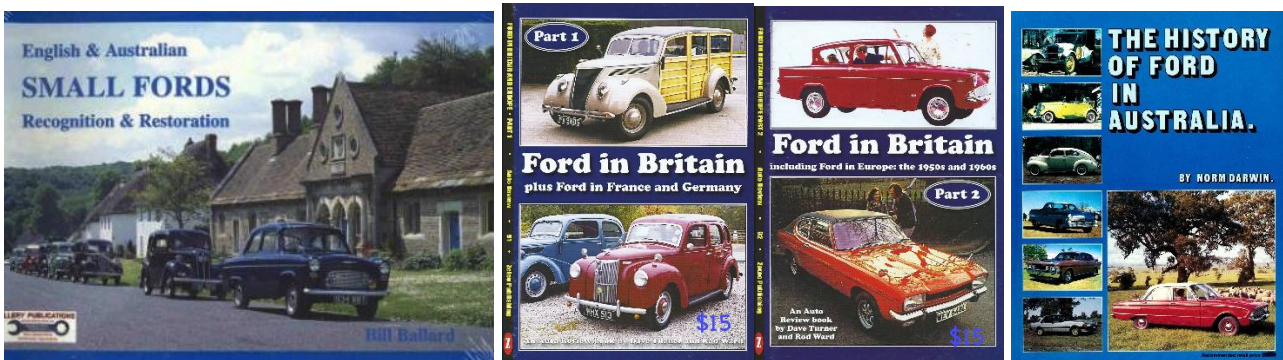
**\*\*\*Mk3 Zodiac**

**Front Windscreen Rubber** – Has a narrow groove to take chrome moulding & moulded corners

**Rear Screen Rubber** – Has Wide channel to take chrome & **NO** moulded corners as per original

# Books

Book - English & Australian Small Fords Recognition & Restoration By Bill Ballard	each	\$25.00
Book - Part 1 : Ford in Britain, : Plus Ford in France and Germany	each	\$15.00
Book - Part 2 : Ford in Britain : Including Ford in Europe in the 1950s and 1960s	each	\$15.00
Book - Part 3 : Ford in Britain : Plus Ford in Europe	each	\$15.00
Book – The History of Ford in Australia / By Norm Darwin	each	\$45.00



# Workshop Manuals

**Our stock of 2<sup>nd</sup> hand workshop manuals changes regularly. Please inquire about our current stock available**

Mk 1 Zephyr	Genuine Ford – 2 <sup>nd</sup> Hand	\$65.00
Mk 1 Zephyr	Scientific Publications – 2 <sup>nd</sup> Hand	\$35.00
Mk 1 & 2 Zephyr	Genuine Ford – 2 <sup>nd</sup> Hand	\$85.00
Mk 3 Zephyr	Genuine Ford – 2 <sup>nd</sup> Hand	\$95.00