



FORD

ESCORT Mk 1&2

New Parts Price List

YESTERFORD Pty Ltd

English Small Ford Specialist

Anglia - Capri - Cortina - Escort - Prefect - Thames - Zephyr



This catalogue supersedes all lists prior to **5 June 2026**
The most up to date version of this catalogue is on our web site

www.yesterford.com

Some parts in this catalogue are imported from overseas, and prices may change due to the fluctuating currency exchange rate and changing supplier & freight costs.

If you are emailing an inquiry, please include :

Your details : Name, Phone Number & Postcode (& Country if outside Australia) for delivery.

Vehicle details relevant to inquiry : Model, Year, Engine Size, Body Type (eg. 2 door, 4 door, Ute), Transmission, etc

1/21 Burgess Road
Bayswater North
VICTORIA 3153
AUSTRALIA
Ph: 03 9761 4714
International Ph: +61 3 9761 4714
Email: sales@yesterford.com

Opening Hours

Monday – Friday : 9am – 4pm
Saturday : By appointment
Sunday & Public Holidays : CLOSED

Model Information

Escort Mk1 1970 to 7/1975



Engine Code	Type
B	67 CID (1100 cc)
L	79 CID (1300 cc) 1V
T	79 CID (1300 cc) 2V (1300 GT)
H	95 CID (1558 cc) D.O.H.C.
Transmission	Type
V	4 speed floor shift
X	4 speed close ratio floor shift
Y	3 speed Automatic floor shift
Engine **	Cyl Bore Stroke Capacity
1100	4 3.1881" 2.098" 1098 cc
1300	4 3.1881" 2.480" 1287 cc
1558	4 3.2506" 2.867" 1558 cc
Firing Order	Spark Plugs
1100/1300	1.2.4.3 ↻ 14mm
1558 D.O.H.C.	1.3.4.2 ↻ 14mm
Fluid Capacity	
Engine - Oil	1100/1300 3.6 litre (includes filter)
	1588 D.O.H.C 3.7 litre (includes filter)
Trans - Oil	Manual 1.4 litre
	Auto 6.4 litre
Rear Axle - Oil	1.1 litre
Fuel Tank	41.0 litre
Cooling System	1100/1300 5.1 litre
	1588 D.O.H.C. 5.8 litre

****NOTE:** Many Mk1 Escorts have been retrofitted with Mk2 Escort 1600 OHV and 2 litre OHC engines. Please advise if this is the case when enquiring/ordering parts.

Escort Mk2 7/1975 - 1981



Engine Code	Type
L	1.3 litre 1V high compression
D	1.6 litre 2V high compression
E	1.6 litre 1V low compression
J	2.0 litre 2V high compression
R	2.0 litre 2V low compression
Transmission	Type
V	4 speed floor shift
Y	3 speed Automatic floor shift
Engine	Cyl Bore Stroke Capacity
1.3 litre	4 3.1881" 2.480" 1297 cc
1.6 litre	4 3.1881" 3.056" 1598 cc
2.0 litre	4 3.575" 3.03" 1993 cc
Firing Order	Spark Plugs
1.3 & 1.6 litre	1.2.4.3 ↻ 14mm
2.0 litre	1.3.4.2 ↻ 18mm
Fluid Capacity	
Engine - Oil	1.3 & 1.6 litre 3.6 litre (includes filter)
	2.0 litre 3.15 litre (includes filter)
Trans - Oil	Manual 1.4 litre
	Auto 6.5 litre
Rear Axle - Oil	1.1 litre
Fuel Tank	Side fill sedan 41.0 litre
	Rear fill sedan 53.0 litre
	Panel Van to 6/77 41.0 litre
	Panel Van from 6/77 53.0 litre
Cooling System	1.3 litre 5.1 litre
	1.6 litre 5.8 litre
	2.0 litre 7.1 litre

Engine Gaskets & Seals

Part Description	Unit	1300/1600 OHV X/Flow	2000 OHC
Gasket Set - Full Engine **	each	\$120.00	\$145.00
Gasket Set - Top Engine (VRS)	each	\$65.00	\$85.00
Gasket Set - Top Engine (VRS) – Felpro Head Gasket	each	\$115.00	\$135.00
Gasket Set - Bottom Engine **	each	\$55.00	\$65.00
Gasket - Cylinder Head	each	\$35.00	\$25.00
Gasket - Cylinder Head - Felpro	each	\$75.00	\$75.00
Gasket - Rocker Cover - Cork	each	\$15.00	\$15.00
Gasket - Rocker Cover - Rubber	each	\$22.50	\$32.00
Gasket - Rocker Cover - Cork – 2.0L Late Wide Type	each	—	\$15.00
Gasket - Rocker Cover - Rubber – 2.0L Late Wide Type	each	—	\$32.00
Gasket - Inlet Manifold	each	\$8.00	\$10.00
Gasket - Exhaust Manifold	set	\$10.00	\$10.00
Gasket - Exhaust Extractor	each	\$20.00	\$20.00
Gasket – Sump **	each	\$35.00	\$25.00
Gasket - Water Pump	each	\$3.00	\$6.00
Gasket - Thermostat Housing	each	\$4.00	\$4.00
Seal - Rubber - Thermostat Housing	each	—	\$5.50
Gasket - Front Timing Case	each	\$6.00	\$5.00
Gasket - Rear Cover	each	\$4.50	—
Gasket - Oil Pump	each	\$6.00	—
Gasket - Fuel Pump	each	\$3.00	\$3.00
Seal - Crankshaft Front	each	\$15.00	\$12.00
Seal - Crankshaft Rear	each	\$22.00	\$22.00
Seal - Camshaft	each	—	\$12.00
Seal - Aux Shaft	each	—	\$12.00
Seal - Valve Stem	set	\$15.00	\$15.00
“O” Ring - Oil Pump	each	\$3.00	—
Sump Plug Washer	each	\$2.00	\$2.00

**** Early 1300/1600 motors have 7mm cork wide sump end seals. Late have 10mm rubber.**

Twin Cam

Part Description	Unit	
Twin Cam Gasket Set - Top Engine (VRS)	each	\$145.00
Twin Cam Gasket Set - Bottom Engine <i>To Suit a ROPE Seal Block – Includes Timing Cover Gasket</i>	each	\$65.00
Twin Cam Gasket Set - Bottom Engine <i>To Suit a LIP Seal Block – Includes Timing Cover Gasket</i>	each	\$65.00
Twin Cam Gasket – Sump <i>Please advise if a ROPE Seal or LIP Seal Block</i>	each	\$25.00
Twin Cam Inlet “O” Ring Set (set of 8)	set	\$10.00
Twin Cam Gasket Set - Exhaust	each	\$20.00
Twin Cam Gasket - Cylinder Head - 82.5 mm	each	\$55.00
Twin Cam Gasket - Rocker Cover	each	\$25.00
Twin Cam Gasket - Timing Case to Block	each	\$10.00
Twin Cam Gasket - Head to Front Cover	each	\$10.00
Twin Cam Gasket - Thermostat	each	\$4.00
Twin Cam Timing Chain	each	\$35.00
Twin Cam Timing Chain Guide / Damper	each	\$65.00
Twin Cam Head Bolt Set	set	\$415.00
Twin Cam Piston Ring Set EARLY (With Ring Grooves 2, 2, 4.75mm)	set	\$150.00
Twin Cam Piston Ring Set LATE (With Ring Grooves 1.6, 2, 4.75mm)	set	\$275.00
Twin Cam Cam Bore Seal Set (set of 4)	set	\$18.50
Twin Cam Camshaft Bearing Kit <i>(for the 2 cams in the head)</i>	set	\$145.00
Twin Cam Crankshaft Sprocket	each	\$75.00
Twin Cam Camshaft Sprocket <i>(2 required per vehicle)</i>	each	\$125.00
Twin Cam Aux Shaft Sprocket	each	\$125.00
Twin Cam Crankshaft Sprocket	each	\$95.00
Twin Cam Valve – Inlet (1.530 Head Dimension)	each	\$35.00
Twin Cam Valve – Exhaust (1.325 Head Dimension)	each	\$49.50
Twin Cam Valve Guide – Inlet or Exhaust	each	\$20.00
Twin Cam Tensioner Adjusting Nut	each	\$35.00
Twin Cam Tensioner Adjusting Screw	each	\$25.00

Engine Components & Accessories

Part Description	Unit	1300/1600 OHV X/Flow	2000 OHC
Piston & Rings - Most Sizes	set	\$450.00	\$495.00
Piston Rings - 1300/1600	set	\$165.00	—
Piston Rings - 2.0L NOTE#	set	—	\$230.00
Bush - Small End	each	\$9.50	—
Bearing - Conrod	set	\$65.00	\$65.00
Bearing - Mains - All Sizes (if motor is fitted with STD back main bearings)	set	\$85.00	\$65.00
Bearing - Mains – STD, .010, .020, .030 or .040 (if motor is fitted with .015 back main bearings)	set	\$145.00	—
Bearing - Crankshaft Thrust Washers STD	set	\$25.00	\$25.00
Bearing - Crankshaft Thrust Washers OVERSIZE Please advise size: .0025 .005 .0075 or .010	set	\$65.00	—
Bearing - Crankshaft Thrust Washers .005 (2.0L)	set	—	\$35.00
Bearing - Camshaft	set	\$65.00	\$45.00
Bearing - Aux-Shaft	each	—	\$55.00
Bearing - Crankshaft Spigot	each	\$25.00	\$25.00
Engine Mount 1300/1600 - Rubber - Square Type LH SEE PHOTO WITH APPROX MEASUREMENTS	each	\$95.00	—
Engine Mount 1300/1600 - Rubber - Square Type RH SEE PHOTO WITH APPROX MEASUREMENTS	each	\$95.00	—
Engine Mount 1300/1600/2000 - Rubber - Round Type	each	\$45.00	\$45.00
Timing Chain/Belt	each	\$18.00	\$30.00
Timing Belt Guide Plate - Crankshaft	each	—	\$19.50
Timing Chain Tensioner Pad	each	\$15.00	—
Timing Chain Tensioner Pad – For Double Row Chain	each	\$35.00	—
Timing Chain/Belt Tensioner	each	\$45.00	\$75.00
Timing Chain Kit - Chain, Tensioner & Pad & Gears	each	\$145.00	—
Double Row Timing Chain & Gear Set - Adjustable	set	\$275.00	—
Timing Belt Kit - Contains Belt, Tensioner & 3 Oil Seals	each	—	\$135.00

#NOTE – Piston rings

Some 2.0L pistons have 1.6 + 2.0 compression rings, and some have 2.0 + 2.5
 Some 1300/1600 pistons have all 2.0 compression rings, and some have 1.5 + 2.0
 Please advise bore size and compression ring size you require

Part Description	Unit	1300/1600 OHV X/Flow	2000 OHC
Grommet - Cam Belt Cover	set 3	—	\$6.00
Rocker Shaft	each	\$65.00	—
Camshaft – STD – New –1600 <i>(Includes Camshaft Sprocket)</i>	each	\$450.00	—
Camshaft – Mild Road – New SEE SPECS	each	—	\$650.00
Camshaft – Fast Road – New SEE SPECS	each	—	\$650.00
Camshaft – GT – New SEE SPECS	each	\$495.00	—
Camshaft Followers	Set of 8	\$160.00	\$120.00
Camshaft Follower Retaining Spring - Standard	Set of 8	—	\$48.00
Camshaft Follower Retaining Spring - Heavy Duty	Set of 8	—	\$60.00
Camshaft Spray Bar	each	—	\$35.00
Camshaft Sprocket	each	\$45.00	—
Camshaft Sprocket Lock tab	each	\$5.00	—
Camshaft Kit STD (incl. Camshaft, Followers & Spray Bar)	each	—	\$350.00
Camshaft Retaining Plate	each	\$85.00	\$30.00
Camshaft Retaining Plate Lock Tab	each	\$5.00	—
Crankshaft Front Pulley - Heavy Duty	each	\$275.00	—
Crankshaft Front Pulley –STD – Reconditioned	each	\$95.00	—
Crankshaft Sprocket	each	\$25.00	\$125.00
Valves - Inlet	each	\$25.00	\$25.00
Valves - Exhaust	each	\$25.00	\$25.00
Valve Springs - Heavy Duty	set	\$160.00	\$120.00
Valve Springs - Standard	set	\$80.00	\$80.00
Valve Spring Retaining Caps	set	\$135.00	\$160.00
Valve Spring Retaining Cotters (3 Groove Type)	set	\$60.00	\$80.00
PCV Valve	each	\$18.00	\$18.00
PCV Valve Rubber seal	each	\$18.00	\$18.00

Part Description	Unit	1300/1600 OHV X/Flow	2000 OHC
Ring Gear - Flywheel	each	—	\$125.00
Ring Gear – Flywheel <i>**Please advise if 254 or 257 ID</i>	each	\$175.00	—
Flywheel Bolt Set (6 Bolts)	set	\$32.00	\$20.00
Alloy Rocker Cover – Black PHOTO	each	\$495.00	—
Engine Front Seal Housing	each	—	\$125.00
Cylinder Head Bolt Tool (Suits Original Head Bolts)	each	—	\$25.00
Head Bolt Set	each	—	\$75.00
Cam Belt Tensioner Tool	each	—	\$19.50
Oil Pump	each	\$125.00	\$95.00
Oil Pump - High Volume	each	\$195.00	\$185.00
Oil Pressure Switch	each	\$15.00	\$15.00
Oil Filler Cap (Plastic) – No Pipe	each	\$15.00	\$15.00
Oil Filler Cap (Plastic) – With Pipe	each	\$19.50	\$19.50
Oil Filler Cap (Alloy) – No Pipe	each	\$75.00	\$75.00
Oil Filler Cap (Alloy) – With Pipe	each	\$95.00	\$95.00
Drive Shaft - Oil Pump	each	—	\$25.00
Sump Plug (includes washer)	each	\$8.00	\$8.00
Dipstick & Tube	each	—	\$95.00
Accelerator Cable - 1300 Mk1	each	\$55.00	—
Accelerator Cable - For 2000 Conversion in Mk1	each	\$55.00	—
Accelerator Cable - 1300/1600 Mk2	each	\$45.00	—
Accelerator Cable - 2000	each	—	\$85.00
Accelerator Cable - Universal for Side Draft Carby Mk2	each	\$55.00	\$65.00
Accelerator Cable Clip	each	\$8.00	\$8.00
Accelerator Pedal Pad ** NOTE	each	\$18.00	\$18.00
Carburetor Overhaul Kit - 1300/1600	each	\$115.00	—
Carburetor Overhaul Kit - 1300/1600 GT	each	\$115.00	—
Carburetor Overhaul Kit - 2000	each	—	\$115.00

**** NOTE :** Mk1 Escort has 2 accelerator pedal lengths, 50mm (approx.) & 70mm (approx.). Please advise length required when ordering.

Part Description	Unit	Mk1	Mk2
Fuel Pump - Glass Bowl Type – New (includes gasket)	each	\$195.00	—
Fuel Pump - Glass Bowl Type (includes gasket) <i>*Reconditioned / Change Over</i>	C/O(2)	\$155.00	—
Fuel Pump - Sealed Type (includes gasket)	each	\$95.00	\$95.00
Fuel Pump Repair Kit - Glass Bowl Type <i>- Diaphragm with Slot in Stem</i>	each	\$95.00	—
Fuel Pump Repair Kit - Glass Bowl Type <i>- Diaphragm with 2 Notches in Stem</i>	each	\$95.00	—
Fuel Pump Spacer	each	\$18.00	\$18.00
Fuel Pump Blanking Plate	each	\$30.00	\$15.00
Gasket - Fuel Pump	each	\$2.00	\$2.00
Filter – Fuel - Plastic	each	\$6.00	\$6.00
Filter – Fuel - Metal	each	\$18.50	\$18.50
Fuel Cap Locking Mk2 REAR Fill Tank Only Available	each	—	\$38.50
Fuel Cap Non-Locking Mk2 REAR Fill Tank Only Available	each	—	\$25.00
Hose - Fuel Tank to Filler Neck - SIDE Fill Tank ***Does NOT fit Panel Van***	each	\$55.00	\$55.00
Hose - Fuel Tank to Filler Neck - REAR Fill Tank ***Does NOT fit Panel Van***	each	—	\$15.00

Fuel Caps – Mk1 Escort NO LONGER AVAILABLE

Chrome Rectangular Sports Air Cleaners

Part Description	Unit	Mk1	Mk2
Assembly - 1600 GT (Ghia)	each	\$65.00	—
Assembly - 2000	each	—	\$65.00
Replacement Filter Element	each	\$25.00	\$25.00

Exhaust

Exhaust	Unit	1300/1600	2000
Extractors	each	\$495.00	\$495.00
Extractor Gasket	each	\$20.00	\$20.00
Inlet Manifold/Stud Set	set	\$25.00	\$25.00
Exhaust Manifold Stud Set	set	\$35.00	\$35.00
Exhaust Manifold to Pipe Studs	pair	\$8.00	\$8.00
Exhaust Hanger Rings	each	\$5.00	\$5.00

Tune Up & Service

Part Description	Unit	1300/1600 OHV X/Flow	2000 OHC
Spark Plugs	set 4	\$24.00	\$24.00
Spark Plug Leads	set	\$45.00	\$45.00
Spark Plug Lead Separator Block	each	\$18.00	\$18.00
Contact Points - Lucas Distributor	each	\$12.00	—
Contact Points - Motorcraft/Fomoco Distributor	each	\$18.00	—
Contact Points - Bosch Distributor	each	—	\$12.00
Rotor Button - Lucas Distributor – 25D4*	each	\$12.00	—
Rotor Button - Lucas Distributor – 45D4*	each	\$16.50	—
Rotor Button - Australian Lucas Distributor	each	\$19.50	—
Rotor Button - Motorcraft/Fomoco Distributor	each	\$12.00	—
Rotor Button - Bosch Distributor	each	—	\$25.00
Condenser - Lucas Distributor	each	\$12.00	—
Condenser - Motorcraft/Fomoco Distributor	each	\$18.00	—
Condenser - Bosch Distributor	each	—	\$25.00
Distributor Cap - Australian Lucas Distributor	each	\$55.00	—
Distributor Cap - Motorcraft/Fomoco Distributor	each	\$35.00	—
Distributor Cap - Bosch Distributor	each	—	\$35.00
Distributor Cap - Bosch Distributor – Side Entry	each	—	\$55.00

Distributor - Lucas - Points Type - New	each	\$155.00	—
Distributor - Lucas - Electronic Type - New	each	\$275.00	—
Distributor - Bosch - Points Type - New	each	—	\$185.00
Distributor - Bosch - Electronic Type - New	each	—	\$275.00
Electronic Ignition Kit - Motorcraft	each	\$125.00	—
Electronic Ignition Kit - Bosch	each	—	\$125.00
Electronic Ignition Kit - Lucas	each	\$125.00	—
Ignition Coil	each	\$65.00	\$65.00
Filter - Oil - Screw On	each	\$12.00	\$15.00
Filter - Oil - Budget	each	—	\$10.00
Filter - Air (205mm OD, 145mm ID, 52 H)	each	\$15.00	—
Filter - Air (305 mm Outer Diameter)	each	\$18.00	\$18.00
Filter – Sport Air Filter – Round - 1600 <i>Suits original Carby with 59mm top</i>	each	\$35.00	—
Filter - Fuel	each	\$6.00	\$6.00
Wiper Blade Assembly - Stainless Steel	each	\$45.00	—
Wiper Blade Assembly - Black	each	\$25.00	\$25.00
Wiper Arm Cover	pair	—	\$30.00
Wiper Arm (Mk1 Only)	each	\$55.00	—

Cooling System

Part Description	Unit	1300/1600 OHV X/Flow	2000 OHC
Water Pump (includes gasket)	each	\$75.00	\$75.00
Water Pump Repair Kit – Twin Cam	each	\$120.00	—
Water Pump Impellor Seat Ring & “O” Rings – Twin Cam	each	\$65.00	—
Gasket - Water Pump	each	\$3.00	\$4.00

Thermostat	each	\$15.00	\$15.00
Thermostat Housing (includes gasket) ^^^ for 2.0L, see note below	each	\$85.00	\$135.00
Thermostat Housing with provision for thermostat Fan Switch, etc	each	\$145.00	\$145.00
Gasket - Thermostat Housing	each	\$4.00	\$4.00
Seal - Rubber - Thermostat Housing	each	—	\$5.00
Clip - Thermostat Housing	each	—	\$5.00
Thermostat Housing Kit - Gasket, Rubber Seal & Clip	each	—	\$15.00
Radiator Hose - Top	each	\$18.00	\$18.00
Radiator Hose – Top – Twin Cam (2 Piece)	each	\$30.00	—
Radiator Hose – Top – Twin Cam (1 Piece)	each	\$75.00	—
Radiator Hose – Top – English 2.0L PHOTO	each	—	\$45.00
Radiator Hose - Bottom	each	\$15.00	\$18.00
Radiator Hose – Bottom – Twin Cam	each	\$65.00	—
Radiator Cap	each	\$12.00	\$12.00
Fan Belt	each	\$12.00	\$12.00
Temp. Sender Unit	each	\$29.50	\$29.50
Water Outlet - Inlet Manifold	each	\$12.00	—
Water Pump Inlet - Heater Hose	each	\$12.00	—
Hose - Heater to Water Pump	each	20.00***	\$15.00
Hose - Heater to Inlet Manifold	each	\$15.00***	\$12.00
Engine Fan	each	\$110.00	\$110.00
Welsh Plug – Brass - Block Side & Head	each	\$4.00	\$5.00
Welsh Plug – Brass - Block Rear	each	\$5.00	\$5.00

*** Generally these only fit Mk1

^^^ For the 2.0L, we can only supply the EARLY type thermostat housing. These have NO threaded hole for pollution fitting.

Starter Motor & Alternator

Part Description	Unit	1300/1600 OHV X/Flow	2000 OHC
Starter Motor - New - High Torque	each	\$650.00	\$695.00
Starter Motor - Pinion - Manual Starter	each	\$75.00	—
Starter Solenoid - Manual	each	\$65.00	—
Alternator - New Lucas 18ACR (45 Amp)	each	\$325.00	\$325.00
Alternator Wiring Plug (<i>suits English Lucas Alternator</i>)	each	\$15.00	\$15.00
Alternator Mount - Bush Repair Kit (<i>includes Bushes & Bolts</i>)	each	—	\$55.00
Alternator Adjusting Bracket	each	—	\$25.00

Some parts in this catalogue are imported from overseas, and prices may change due to the fluctuating currency exchange rate and changing supplier & freight costs.

Some parts in this catalogue are imported from overseas, and prices may change due to the fluctuating currency exchange rate and charges from suppliers.

Some parts in this catalogue are remanufactured either in Australia or overseas. Sometimes new items become available, sometimes current items are discontinued. Whilst we endeavour to keep the catalogue up to date with any stock and price changes, sometimes we are unaware of changes until we are in communication with our suppliers.

If you are emailing an inquiry, please include :

Your details : Name, Phone Number & Postcode (& Country if outside Australia) for delivery.

Vehicle details relevant to inquiry : Model, Year, Engine Size, Body Type (eg. 2 door, 4 door, Ute), Transmission, etc

***Reconditioned / Change Over**

Items available as ***Reconditioned / Change Over** require a change over unit from the customer.

A deposit will be charged for all Change Over units when core units are not supplied at the time of purchase.

All deposits are refunded when the change over unit is received from the customer (we appreciate prompt return of change over units).

Deposit required : C/O(2) = \$30.00, C/O(3) = \$50.00, C/O(4) = \$100.00

Transmission

Part Description	Unit	Mk1 OHV X/Flow	Mk2
Gearbox Mount - Manual 70/72 *** NOTE	each	\$175.00	—
Gearbox Mount - Twin Cam to Nov 70 *** NOTE	each	\$55.00	—
Gearbox Mount - Twin Cam from Nov 70 to 72***NOTE	each	\$175.00	—
Gearbox Mount - Manual 73/81 *** NOTE	each	\$75.00	\$75.00
Gasket Set - Manual Gearbox - 4 speed	set	\$25.00	\$25.00
Gasket Set - Manual Gearbox - 5 speed	set	\$45.00	\$45.00
Gasket – Bell Housing – '73-	each	\$5.00	\$5.00
Seal - Front Input Shaft	each	\$15.00	\$15.00
Seal - Extension Housing	each	\$15.00	\$15.00
Seal - Speedo Drive	each	\$8.00	\$8.00
Speedo Gear Plug – 73/81	each	\$29.50	\$29.50
Bearing - Front - 70/72	each	\$35.00	—
Bearing - Front	each	\$35.00	\$35.00
Bearing – Main Shaft – <i>Please Advise if 4 or 5 Speed</i>	each	\$95.00	\$95.00
Bearing - Rear - 70/72	each	\$75.00	—
Bearing - Rear - 73/81	each	\$35.00	\$35.00
Extension Housing Rear Bush - 70/72	each	\$95.00	—
Extension Housing Rear Bush - 73/81	each	\$95.00	\$95.00
Synchro Rings	each	\$75.00	\$75.00
Layshaft Rollers – 73/81	set	\$70.00	\$70.00
Tailshaft Centre Bearing - 2 Piece Shaft	each	\$25.00	\$25.00
Tailshaft Centre Bearing - 2 Piece Shaft – WITH End Caps	each	\$45.00	\$45.00
Tailshaft Centre Bearing Support Rubber	each	\$45.00	\$45.00
Universal Joint - Tailshaft	each	\$35.00	\$35.00

*** NOTE Gearbox Mounts can vary, depending on any current or previous modifications made to the vehicle. [Please check size/dimensions of mounts HERE](#)

Part Description	Unit	Mk1	Mk2
Gear Lever to Selector Shaft Saddle - 73/81 - 4 Speed (Plastic)	each	\$5.00	\$5.00
Gear Lever to Selector Shaft Saddle - 73/81 - 5 Speed (Plastic)	each	\$15.00	\$15.00
Gear Lever to Selector Shaft Saddle - 73/81 - 5 Speed (Brass)	each	\$55.00	\$55.00
Gear Lever - New - Quick Shift - 73/81 - 4 Speed	each	\$125.00	\$125.00
Gear Lever - New - Quick Shift - 5 Speed	each	\$125.00	\$125.00
Gear Lever – New – 4 Speed – Original Style '73 - PHOTO	each	\$245.00	\$245.00
Gear Lever – 4 Speed * Reconditioned / Change Over	C/O(2)	\$145.00	\$145.00
Gear Lever Repair Kit – 4 Speed '73-'81 PHOTO	each	\$110.00	\$110.00
Gear Lever Pivot Ball – 4 Speed '73-'81	each	\$25.00	\$25.00
Gear Lever Knob – Original Style PHOTO . <i>Please refer to attached photo and advise which style you require</i>	each	\$65.00	\$65.00
Gear Lever Knob – After Market Type	each	\$19.50	\$19.50
Switch - Reverse Light - 12 mm Thread	each	\$75.00	—
Switch - Reverse Light - 14 mm Thread <i>**Small wiring modification is needed This switch also suits Sierra 5 speed</i>	each	\$45.00	\$45.00
Auto Pan Gasket & Filter Kit - BW 35 & C3	each	\$15.00	\$15.00
Gearbox Mount - Automatic	each	\$55.00	\$75.00
Seal - Front - BW35	each	\$15.00	—
Seal - Extension Housing - C3 Automatic	each	—	\$35.00
Seal - Front - C3 Automatic	each	—	\$45.00
Drive Plate - BW35 Automatic	each	\$55.00	—
Drive Plate - C3 Automatic * Reconditioned / Change Over	C/O(2)	—	\$250.00
Inhibitor Switch - BW35 Automatic	each	\$75.00	—
Kick Down Cable - Automatic	each	\$85.00	—



Gear Lever – New – 4 Speed – Original Style [SEE ADDITIONAL PHOTO](#)

Brake

Part Description	Unit	Mk1	Mk2
Brake Disc - STD	each	\$250.00	\$115.00
Brake Disc - Twin Cam	each	\$125.00	—
Brake Disc - Vented, Cross Drilled & Groved	each	—	\$175.00
Brake Disc Upgrade Kit - <i>Includes 2 x Calipers + 2 x Discs (Vented, Cross Drilled & Groved)</i>	kit	—	\$795.00
Brake Disc Pads (set of 4 pads)	set	\$55.00	\$55.00
Brake Disc to Hub Lock Tab	Set 4	\$20.00	\$20.00
Brake Disc Pad Fitting Kit - Shims & Retaining Pins	each	—	\$25.00
Brake Caliper Kit	each	\$25.00	\$25.00
Brake Caliper Piston	each	\$30.00	\$45.00
Brake Caliper – New (Includes Disc Pad Fitting Kit)	pair	—	\$395.00
Brake Caliper - Reconditioned (We require your existing calipers to recondition)	pair	\$395.00	\$395.00
Brake Caliper Spacer Kit - 1 kit per car (Used to fit vented discs to existing calipers)	kit	—	\$95.00
Brake Caliper Mounting Bolt Lock Tab	pair	\$10.00	\$10.00
Brake Shoes (set of 4 shoes) <i>*Reconditioned / Change Over</i>	set C/O(2)	\$55.00	\$55.00
Brake Shoe Fitting Kit <i>Suits Early model with manual adjusting brakes</i>	kit	\$35.00	—
Brake Master Cylinder Repair Kit Mk1 - PHOTO <i>**Please advise bore size. 19.05mm or 20.64mm</i>	each	\$35.00	—
Brake Master Cylinder Repair Kit -10/75-11/77 -2 Pipes	each	—	\$75.00
Brake Master Cylinder Repair Kit - 11/77 on -3 Pipes	each	—	\$25.00
Brake Booster <i>*Reconditioned / Change Over</i>	C/O(3)	\$695.00	\$695.00
Brake Booster Rod Linkage Firewall Grommet	each	\$25.00	\$25.00
Brake Wheel Cylinders - Front	each	\$45.00	—
Brake Wheel Cylinders - Rear	each	\$45.00	\$30.00
Brake Wheel Cylinder Repair Kit	each	\$20.00	\$20.00
Brake Rear Wheel Cylinder Retaining Clip Set <i>(1 set only required per car)</i>	set	\$15.00	—
Dust Boot - Rear Wheel Cylinders - Hand Brake Lever	pair	\$30.00	\$30.00

Part Description	Unit	Mk1	Mk2
Brake Drum - 8"	each	\$175.00	\$175.00
Brake Drum - 9"	each	—	\$145.00
Brake Hose - Front or Rear	each	\$45.00	\$45.00
Brake Hose - Front or Rear - Imperial to Metric Conversion	each	\$45.00	—
Rubber Pad - Brake Pedal - Manual	each	\$10.00	\$10.00
Hand Brake Cable	each	\$75.00	\$75.00
Bush - Hand Brake Rod Support on Diff	each	\$10.00	\$10.00
Bush - Brake & Clutch Pedal Pivot	set 4	\$30.00	\$30.00
Switch – Brake Light	each	\$21.50	\$21.50

*Reconditioned / Change Over

Items available as ***Reconditioned / Change Over** require a change over unit from the customer.

A deposit will be charged for all Change Over units when core units are not supplied at the time of purchase.

All deposits are refunded when the change over unit is received from the customer (we appreciate prompt return of change over units).

Deposit required : C/O(2) = \$30.00, C/O(3) = \$50.00, C/O(4) = \$100.00

Speedo Cables

Check the speedo has not ceased BEFORE fitting a new speedo cable

Part Description	Unit	Mk1	Mk2
Speedo Cable - Manual	each	\$65.00	\$65.00
Speedo Cable - Auto	each	\$65.00	\$65.00
Speedo Cable for 5 Speed Gearbox	each	\$65.00	\$65.00
Speedo Cable Circlip - Manual	each	\$2.00	\$2.00
Speedo Gear Plug	each	\$29.50	\$29.50

Some parts in this catalogue are imported from overseas, and prices may change due to the fluctuating currency exchange rate and changing supplier & freight costs.

Some parts in this catalogue are imported from overseas, and prices may change due to the fluctuating currency exchange rate and charges from suppliers.

Some parts in this catalogue are remanufactured either in Australia or overseas. Sometimes new items become available, sometimes current items are discontinued. Whilst we endeavour to keep the catalogue up to date with any stock and price changes, sometimes we are unaware of changes until we are in communication with our suppliers.

If you are emailing an inquiry, please include :

Your details : Name, Phone Number & Postcode (& Country if outside Australia) for delivery.

Vehicle details relevant to inquiry : Model, Year, Engine Size, Body Type (eg. 2 door, 4 door, Ute), Transmission, etc

Clutch

Part Description	Unit	Mk1	Mk2
Clutch Cable - 1970/72	each	\$95.00	—
Clutch Cable - 1973/75	each	\$165.00	—
Clutch Cable - 1300/1600	each	—	\$165.00
Clutch Cable - 2000	each	—	\$165.00
Clutch Cable - 2000 with Extractors	each	—	\$165.00
Clutch Cable for 2000 Conversion	each	\$165.00	—
Clutch Cable to Pedal Pin & Clip	each	—	\$25.00
Clutch Kit – 1300 – New – Early Mk1 Gearbox	each	\$295.00	—
Clutch Kit – 1300/1600 - New - 1973/81	each	\$350.00	\$350.00
Clutch Kit – 2000 – New <i>Spacer & Long Bolt are NOT required Kit includes Spigot Bearing & Alignment Tool</i>	each	—	\$295.00
Clutch Driven Plate - 1973/81	each	\$125.00	\$125.00
Clutch Driven Plate - 1970/72	each	\$110.00	—
Clutch Release Bearing - 1973/81	each	\$35.00	\$35.00
Clutch Release Bearing - 1970/72	each	\$55.00	—
Clutch Release Bearing for English 2000 Clutch	each	—	\$75.00
Clutch Slave Cylinder - New - 7/8" Bore - Twin Cam	each	\$125.00	—
Rubber Pad - Clutch Pedal	each	\$10.00	\$10.00
Bush - Clutch Cable to Bell Housing	each	\$10.00	\$10.00
Bearing - Crankshaft Spigot	each	\$25.00	\$25.00
Clutch Release Lever Pivot Spacer & Bolt (2000 Clutch) <i>Needed When Converting from 1300/1600 to 2000 Eng. Not Needed if Using English 2000 Clutch</i>	each	\$25.00	\$25.00

Suspension and Steering

Part Description	Unit	Mk1	Mk2
Strut Inserts - 70 to 2/74 - GAZ Adjustable ** 1/2" hole in strut mount	pair	\$650.00	—
Strut Inserts - STD Gas - Suit 2.0L ** Strut Housing 51mm Diameter	pair	—	\$395.00
Strut Inserts - GAZ Adjustable - Suit 2.0L ** Strut Housing 51mm Diameter	pair	—	\$650.00
Strut Inserts - 2/74 to 81 – 1300-1600 ** 5/8" hole in strut mount ** Strut Housing 48mm Diameter	pair	\$350.00	\$350.00
Strut Inserts - 2/74 to 81 - GAZ Adjustable – 1300-1600 ** 5/8" hole in strut mount ** Strut Housing 48mm Diameter	pair	\$650.00	\$650.00
Strut Inserts – GAZ Adjustable – Suit Twin Cam ** 1/2" Shaft	pair	\$650.00	—
Top Strut Mounts – STD - MK1 EARLY with 1/2" Shaft	pair	\$450.00	—
Top Strut Mounts – STD - MK1 LATE or MK2 EARLY with 5/8 Shaft. Has 110mm Strut Top Opening in Body	pair	\$450.00	\$450.00
Top Strut Mounts – Roller Bearing Type (incl Adapters & Caps) (May raise car approx 20mm) Please specify if 1/2" or 5/8" hole in the old strut mount	pair	\$350.00	—
Top Strut Mounts – Roller Bearing Type (incl Adapters & Caps) (May raise car approx 20mm) Suits models 10/1975 – 7/1977 with 110mm strut top opening in body	pair	—	\$350.00
Top Strut Mounts – Roller Bearing Type (incl Adapters) (May raise car approx 20mm) Suits models 7/1977 onwards with 85mm strut top opening in body	pair	—	\$475.00
Rear Shockers – Gas Only fit 2&4 Door Sedans 2/1974 on	pair	\$195.00	\$195.00
Rear Shockers – GAZ Adjustable Specify Early, Late or P/Van	pair	\$595.00	\$595.00
Lower Control Arm With Ball Joint & Rubber Bushes & Boot	each	\$95.00	\$95.00
Lower Control Arm With Ball Joint & Urethane Bushes & Boot Aftermarket Style	pair	\$250.00	\$250.00
Lower Control Arm With Ball Joint & Urethane Bushes & Boot Original Style	pair	\$335.00	\$335.00
Boot - Control Arm Ball Joint	pair	\$12.00	\$12.00
Bush - Control Arm Outer - Rubber (2 Bushes)	kit	\$20.00	\$20.00

** Year and date are approximate only. When ordering Mk1, please check the size of hole in the strut mount carefully AND strut Housing Diameter prior to ordering

Part Description	Unit	Mk1	Mk2
Bush - Sway Bar Front Mount - Urethane	pair	\$20.00	\$20.00
Sway Bar Nut & Washer Set	set	\$30.00	\$30.00
Sway Bar Clamp (Front)	pair	\$45.00	\$45.00
Sway Bar Clamp (Rear)	pair	\$45.00	\$45.00
Tie Rod End – Outer (Includes Boot)	each	\$25.00	\$25.00
Tie Rod End - Outer - English RS Type (Includes Boot)	each	\$45.00	—
Boot - Tie Rod End	pair	\$12.00	\$12.00
Steering Column Bush Set (Incl Upper + Lower Bush)	set	—	\$25.00
Steering Arms - Twin Cam	pair	\$145.00	—
Steering Arm Bolt Set	set	\$45.00	—
Steering Rack - Quick Rack – New - 2.4 Turns Lock to Lock (Must Use RS Tie Rod Ends on Mk1 Escorts) SEE PHOTO <i>NOTE: A Standard Rack is 3.5 Turns Lock to Lock</i>	each	\$495.00	\$495.00
Steering Rack - Quick Rack – New - 2.9 Turns Lock to Lock (Must Use RS Tie Rod Ends on Mk1 Escorts) SEE PHOTO <i>NOTE: A Standard Rack is 3.5 Turns Lock to Lock</i>	each	\$450.00	\$450.00
Steering Rack End	each	\$85.00	\$55.00
Steering Rack End Lock Nut	each	\$15.00	\$15.00
Steering Rack Boots	pair	\$45.00	\$45.00
Steering Rack Internal Bush	each	\$18.00	\$18.00
Steering Rack Mounts - Rubber	pair	\$20.00	\$20.00
Steering Rack Clamps	pair	\$45.00	\$45.00
Steering Coupling Repair Kit - Urethane	each	\$65.00	\$65.00
Steering Coupling - Group 4 (Short - Cast Type) (Approx 78mm in total length & 64mm between centre of bolt holes) PHOTO	each	\$150.00	\$150.00
Steering Coupling - Group 4 (Short - Cast Type) (Approx 100mm in total length & 75mm between centre of bolt holes) PHOTO	each	\$75.00	\$75.00
Steering Coupling - Group 4 (Long - Cast Type) (Approx 115mm in total length & 90mm between centre of bolt holes) PHOTO	each	\$195.00	\$195.00

Lowering Blocks - 1" (Kit includes U Bolts)	kit	\$115.00	\$115.00
Lowering Blocks - 1 1/2" (Kit includes U Bolts)	kit	\$125.00	\$125.00
Lowering Blocks - 2" (Kit includes U Bolts)	kit	\$135.00	\$135.00
Lowering Blocks - 2 1/2" (Kit includes U Bolts)	kit	\$145.00	\$145.00
U Bolt Set	set	\$55.00	\$55.00

Urethane Suspension Bush Kits

Front End	Kits Required Per Vehicle	Mk1	Mk2
Sway Bar Front Mount - Std. 20mm.	1	\$30.00	\$30.00
Sway Bar Front Mount - 22mm.	1	\$25.00	\$25.00
Sway Bar Front Mount - 20mm, 22mm or 24mm Double Width	1	\$42.00	\$42.00
		(set of 2) \$63.00	(set of 2) \$63.00
		(set of 3)	(set of 3)
Lower Control Arm - Inner	1	\$55.00	\$55.00
Lower Control Arm - Outer	1	\$55.00	\$55.00
Steering Rack Mount	1	\$30.00	\$30.00
Steering Rack Internal Bush	1	\$18.00	\$18.00
Steering Coupling Repair Kit – Nolathane Type	1	\$65.00	\$65.00
Rear End	Kits Required Per Vehicle	Esc-Mk1	Esc-Mk2
Rear Spring - Front Eye **	1	\$85.00	\$75.00
Rear Spring - Rear Eye **	1	\$55.00	\$55.00
Shackle to Chassis **	1	\$35.00	\$35.00
Rear Spring - Sandwich Pad	1	\$95.00	\$115.00
Rear Shocker Crossmember Bushes <i>Mk1 Sedan 1970 to 2/74 And All Panel Vans. Suits shockers with top eye type fitting</i>	1	\$55.00	\$55.00
Sway Bar - Front Eye to Chassis	1	—	\$65.00
Sway Bar Mount To Diff - 12mm.	1	—	\$28.50
Sway Bar Mount To Diff - 14mm.	1	—	\$32.00
Diff Location Arm - Front Eye - Mk1 Twin Cam	1	\$55.00	—
Diff Location Arm - Rear Eye - Mk1 Twin Cam	1	\$55.00	—
Bush - Hand Brake Rod Support on Diff	1	\$10.00	\$10.00

**** For Mk1 Escort, these are also available in Rubber. See next page.**

Rubber Suspension Bushes

Rear End

	Bushes Required Per Vehicle	Mk1	Mk2
Rear Spring - Front Eye	2	\$45.00 ea	—
Rear Spring – Rear Eye URETHANE ONLY	2	—	—
Shackle to Chassis	4	\$6.00 ea	—
Diff Location Arm - Front & Rear Eye Bush Kit – Rubber – Twin Cam (Kit does both sides of car, Front & Rear)	kit	\$110.00	—

Front and Rear Axle

Part Description	Unit	Mk1	Mk2
Bearing & Seal Kit - Front Hub (One Wheel Set)	each	\$45.00	\$45.00
Bearing & Seal Kit - Front Hub (Twin Cam - One Wheel Set)	each	\$75.00	—
Seal - Front Hub	each	\$8.00	\$8.00
Front Hub Nut & Washer Set (Does Both Sides)	set	\$30.00	\$30.00
Bearing - Rear Axle (<i>Incl. Lock Ring</i>)	each	\$75.00	\$75.00
Bearings - Diff Centre - Front Load Diff (English)	set	\$195.00	\$195.00
Seal - Diff Pinion - Front Load Diff (English)	each	\$25.00	\$25.00
Diff Pinion Flange (<i>suit STD & GT with English Diff</i>)	each	\$225.00	\$225.00
Diff Pinion Flange Nut	each	\$29.50	\$29.50
Tail Shaft to Diff Bolt Set <i>Suits models with threaded diff flange</i>	set	\$10.00	\$10.00
Collapsible Spacer - Diff Pinion (English)	each	\$45.00	\$45.00
Seal - Diff Pinion - Rear Load Diff (BW)	each	\$15.00	—
Gasket - Diff Centre to Axle Housing (English)	each	\$6.00	\$6.00
Gasket - Diff (BW)	each	\$10.00	—
Crown Wheel & Pinion (suits ENGLISH Diff Only) ^^	each	\$850.00	\$850.00
Crown Wheel Bolt Set (6 Bolts) (suits ENGLISH Diff Only)	set	\$32.00	\$32.00
Diff Rebuild Kit for ENGLISH DIFF - <i>Includes: Bearings, Collapsible Spacer, Pinion Seal, Gasket</i>	kit	\$270.00	\$270.00
ENGLISH Diff Centre - Reco (Customer Supplied Centre) (<u>New</u> Crown Wheel & Pinion) (New Flange)	each	\$1550.00	\$1550.00
Helical Limited Slip Diff Unit (Suits English Diff)	each	\$895.00	\$895.00
Wheel Nuts – STD (Set of 16)	set	\$30.00	\$30.00

Note (^^) Available in 4.4, 4.1, 3.89, 3.77, 3.54

Lighting & Electrical

Part Description		Unit	Mk1	Mk2
Head Light - Round 5 3/4" High/Low Beam (RS2000)	#	each	—	\$30.00
Head Light - Round 5 3/4" High Beam - (RS2000)	#	each	—	\$30.00
Head Light - Round 7" H4 – Flat Glass – With Park Lamp		each	\$30.00	\$30.00
Head Light - Round 7" Sealed Beam		each	\$30.00	\$30.00
Head Light Wiring Plug		each	\$10.00	\$10.00
Head Light Bowl / Bucket Assembly (<i>Round 7" Only</i>)		pair	\$90.00	—
Lens - Front Indicator		each	—	\$25.00
Lens - Front Indicator - English Housing - Amber - Plain **		each	\$25.00	—
Lens - Front Indicator - English Housing - Amber - Chrome Edge **		each	\$25.00	—
Lens - Front Indicator - Hella Australia Housing - Amber ^^		each	\$25.00	—
Lens - Front Indicator - English Housing - Clear **		each	\$32.00	—
Lens - Front Indicator - Hella Australia Housing - Clear ^^		each	\$32.00	—
Front Indicator Assembly (Includes Lens & Gasket) ##		each	\$110.00	\$110.00
Lens - Tail Light - Sedan (LH & RH)		each	\$95.00	—
Lens - Tail Light – Panel Van (LH & RH)		each	\$45.00	\$45.00
Tail Light Chrome Surrounds		pair	\$130.00	—
Lens - Tail Light (L or R) - Good Quality		each	—	\$125.00
Lens - Tail Light (L ONLY) - Budget		each	—	\$25.00
Lens – Tail Light - PANEL VAN (L or R)		each	\$45.00	\$45.00
Seal - Tail Light Lens to Tail Light Housing		pair	\$18.00	—
Seal - Tail Light (Housing to Body) Set of 2 pieces		set	\$70.00	—
Tail Light Assembly/Body (L or R) - Including Lens & Seal		each	\$360.00	\$290.00
Tail Light Body (L or R) - NO Lens, includes Seal		each	\$165.00	\$195.00
Lens - Reverse Light (Mk1 Sedan Only)		each	\$25.00	—
Lens - Reverse Light - Panel Van (<i>Suit Hella Lamps Only</i>)		each	\$20.00	\$20.00

Note: (#) Available in Sealed Beam or Semi Sealed. Supplied with globe.

***Note: (**)** English Indicator has a Metal Housing. Mounting holes on LENS are 98mm apart.

***Note: (^^)** Hella Australia Indicator has a Plastic Housing. Mounting holes on LENS are 91mm apart. The Difference Between the Two Lenses ** & ^^ is the Spacing of the Mounting Holes to the Indicator Housing.

***Note: (##)** The replacement Front Indicator Assembly is the English style, and take the ENGLISH LENS

***Please advise which Lens you require when ordering.**

Part Description	Unit	Mk1	Mk2
Number Plate Light Assy – Panel Van	each	\$25.00	\$25.00
Number Plate Light Assy – Mk2 Sedan	each	—	\$60.00
Interior Light Assembly (Includes Globe)	each	\$75.00	\$75.00
Switch - Indicator Control	each	—	\$125.00
Switch - Indicator Control (Lucas)	each	\$125.00	—
Minor modification required For Mk1			
SEE PHOTO SEE MODIFICATION& WIRING INSTRUCTIONS			
Indicator Cancelling Can	each	\$49.50	\$49.50
Switch - Brake Light	each	\$21.50	\$21.50
Switch – Door Switch /Courtesy Light	pair	\$30.00	\$30.00
<i>Requires a screw to be fitted</i> SEE PHOTO			
Switch – Door Switch /Courtesy Light - Similar to Original	pair	\$45.00	\$45.00
SEE PHOTO			
Globe - Head Light - H4	each	\$10.00	\$10.00
Globe - Stop/Tail Light	each	\$3.00	\$3.00
Globe - Indicator	each	\$2.00	\$2.00
Globe - Park Light or Number Plate Light	each	\$2.00	\$2.00
Wiring Loom Retainer - Two Prong Type - Grey OR Black	each	\$2.00	—
Wiring Loom Retainer - Loop Type	each	\$2.00	—
Indicator Flasher Can	each	\$20.00	\$35.00

Some parts in this catalogue are imported from overseas, and prices may change due to the fluctuating currency exchange rate and changing supplier & freight costs.

Some parts in this catalogue are imported from overseas, and prices may change due to the fluctuating currency exchange rate and charges from suppliers.


Some parts in this catalogue are remanufactured either in Australia or overseas. Sometimes new items become available, sometimes current items are discontinued. Whilst we endeavour to keep the catalogue up to date with any stock and price changes, sometimes we are unaware of changes until we are in communication with our suppliers.

If you are emailing an inquiry, please include :

Your details : Name, Phone Number & Postcode (& Country if outside Australia) for delivery.

Vehicle details relevant to inquiry : Model, Year, Engine Size, Body Type (eg. 2 door, 4 door, Ute), Transmission, etc

Body Parts

Part Description	Unit	Mk1	Mk2
Clip - Bonnet Stay (Please specify if SIDE Entry or TOP Entry Type is required)	each	\$5.00	\$5.00
Grommet - Bonnet Stay	each	\$5.00	\$5.00
Bonnet Release Cable Only	each	\$55.00	\$55.00
Bonnet Release Cable Handle Only	each	\$18.00	\$18.00
Boot Lock Gasket	each	\$5.00	\$5.00
Door Hinge Pins	each	\$4.00	\$4.00
Door Mirror (Suits Australian Model) (please specify LH or RH) ** SEE PHOTO	each	\$175.00	\$175.00
Door Mirror Spacer (Suits Australian Model) (please specify LH or RH) ** SEE PHOTO	each	\$55.00	\$55.00
Sports Mirror (1960's Chrome Bullet Style) SEE PHOTO	each	\$55.00	\$55.00
Interior Door Handles Surrounds - Black	each	—	\$9.00
Interior Door Handles Surrounds - Chrome	each	—	\$10.50
Window Winder Handle Insert	each	—	\$15.00
Door Locking Knob – Black	each	\$12.50	\$12.50
In-Dash Vent (Fixed Open Vent only) #	pair	\$90.00	—
Front Floor Pans	pair	\$275.00	\$275.00
Grille Clip Kit (12 pieces) (With Screws)	set	—	\$25.00
Badge - "Ford" Oval – Grille	each	—	\$55.00
Badge – "1300 XL" – Front Guard 	each	\$25.00	—

** To fit these mirrors to an Escort, spacers are required between the mirror base and door. If you do not have existing spacers, we can supply new. Please specify LH or RH, Mk1 or Mk2.

These are FIXED (will not open/close) but will physically fit all Mk1 Escorts

Part Description	Unit	Mk1	Mk2
Bumper Bar Bolt Set – Chrome - FRONT Only (Set of 4)	set	\$45.00	—
Bumper Bar Bolt Set – Chrome – 1 set does both FRONT & REAR – Includes Spacers for the Rear	set	\$97.00	—
Front Bumper Bar – Black – NEW These are a “plain” type bumper bar, and do not have, or allow provision for a rubber strip	each	—	\$250.00
Carpet Set – Includes Front & Rear Floors Please advise : Colour, Auto or Manual, 2 or 4 door See HERE for Colours – Please allow for difference caused by camera flash & individual device screens. Available in Plush or Loop.	set	\$320.00	\$320.00

Body Transfer Kits



Escort Mk2 2.0L Rally Pack - Full Kit \$195.00

Full Kit Includes :

Front Spoiler Stripe with Escort in Reverse
2 Side Stipes with ESCORT on Rear Quarters
Rear Panel Stripe with 2.0 LITRE

Kits suit both 2 Door and 4 Door Vehicles
Available in various colours - **Please advise colour**

Escort Mk2 RS2000 Full Kit	each	\$225.00
Escort Mk2 RS2000 RS2000 Logo Only - Side (Large)	each	\$40.00
Escort Mk2 RS2000 RS2000 Logo Only - Boot Lid (Small)	each	\$35.00
Escort Mk2 RS2000 Side Stripe Only	pair	\$110.00

Rubber Seals & Weather Strips

Part Description	Unit	Mk1	Mk2
Seal - Windscreen - Front	each	\$175.00	\$175.00
Seal - Windscreen - Rear	each	\$165.00	\$185.00
Seal - Windscreen - Front - RS2000 (Solid Rubber)	each	—	\$195.00
Seal - Windscreen - Rear - RS2000 (Solid Rubber)	each	—	\$195.00
Seal – Rear Door Glass/Window – Panel Van	pair	\$135.00	\$135.00
Chrome (Plastic) Locking Strip - Windscreen Seal - Front or Rear	each	\$35.00	\$35.00
Chrome Locking Strip - Straight Joiner	each	\$10.00	—
Seal - Front 1/4 Window - 4 Door – FIXED (NON-Opening)	pair	\$95.00	\$95.00
Seal - Front 1/4 Window - Panel Van	pair	\$150.00	\$150.00
Seal - Front 1/4 Window - 2 Door	pair	\$150.00	\$150.00
Seal - Rear 1/4 Window - 2 Door - FIXED rear ¼ window	pair	\$150.00	\$295.00
Seal - Rear 1/4 Window - 2 Door - OPENING rear ¼ window	pair	\$110.00	—
Seal - Rear 1/4 Window - 4 Door	pair	\$95.00	—
Seal - Door - 2 Door	each	\$55.00	\$65.00
Seal - Door - 4 Door - Front or Rear	each	\$55.00	—
Seal - Door - 4 Door - Front or Rear – With Mitered / Moulded Corners	each	—	\$65.00
Seal - Door - Panel Van Rear (Barn Door) <i>(Superior - Kit for both doors – WITH moulded corner)</i>	kit	\$160.00	\$160.00
Bailey Channel (Glass Runner) - 4 Door	each	\$45.00	\$35.00
Bailey Channel (Glass Runner) - 2 Door	each	\$35.00	\$35.00
Bailey Channel (Glass Runner) – Panel Van	each	\$35.00	\$35.00

Confused by the different
rubber seals ?

[See here for details](#)

Weather Strip - 4 Door - Front Outer (Door Belt)	each	\$35.00	\$35.00
Weather Strip - 4 Door - Front Inner (Door Belt) **NOTE	each	\$35.00	\$35.00
Weather Strip - 4 Door - Rear Outer (Door Belt)	each	\$35.00	\$35.00
Weather Strip - 4 Door - Rear Inner (Door Belt) **NOTE	each	\$35.00	\$35.00
Weather Strip - 2 Door - Outer (Door Belt)	each	\$75.00	\$35.00
Weather Strip - 2 Door - Inner (Door Belt) **NOTE	each	\$39.50	\$39.50
Weather Strip - Panel Van - Outer (Door Belt)	each	\$75.00	\$75.00
Weather Strip - Panel Van - Inner (Door Belt)	each	\$39.50	\$39.50
Weather Strip - Outer - Clips	each	\$3.00	\$2.00
Weather Strip - Inner - Clips	each	\$3.00	—
Seal - Boot Lid	each	\$55.00	\$55.00
Rear Bumper Bolt Side Plugs - RS2000 only	set 4	—	\$25.00
Rubber Cover – Rear Shock Absorber – Top (Inside Boot)	pair	—	\$25.00
Bonnet Bump Stop - Front	pair	\$15.00	\$15.00
Bonnet Bump Stop Kit - 7 Pieces *Does NOT fit Mk2 PVan	each	\$75.00	\$75.00
Bonnet Bump Stop - Side Pieces x 4 *Does NOT fit Mk2 PVan	set	\$45.00	\$45.00
Bonnet Bump Stop - Centre Rear *Does NOT fit Mk2 PVan	each	\$15.00	\$15.00
Grommet - Bonnet Stay	each	\$5.00	\$5.00
Grommet - Speedo Cable	each	\$15.00	\$15.00
Grommet - Bonnet Release Cable	each	\$18.00	\$18.00
Grommet - Wiring Loom Bulkhead	each	—	\$18.00
Grommet - Steering Column Bulkhead	each	—	\$18.00
Grommet - Oil Line / Bulkhead - RS2000 only	each	—	\$15.00

****NOTE : Mk2 Escort –**

We can only supply the **Inner Weather Strip/Door Belts** for the standard model where the inside door trim finishes a couple of inches below the window ledge.

They **DO NOT** fit the RS2000 or Ghia models, where the inside door trim goes to the window ledge & glass.

Rubber Seal Kits

Escort Mk1 - 4 Door \$1335.00

Contents

- 1 Front Windscreen Seal
- 1 Rear Windscreen Seal
- 2 Windscreen Locking Strips
- 4 Door Seals
- 4 Outer Door Belts (Weather Strip)
- 4 Inner Door Belts (Weather Strip)
- 4 Bailey Channel (Glass Runner)
- 2 Front 1/4 Window Seals
- 2 Rear 1/4 Window Seals

- 1 Boot Seal

Escort Mk1 - 2 Door

FIXED Rear 1/4 windows \$1174

OPENING Rear 1/4 windows \$1134

Contents

- 1 Front Windscreen Seal
- 1 Rear Windscreen Seal
- 2 Windscreen Locking Strips
- 2 Door Seals
- 2 Outer Door Belts (Weather Strip)
- 2 Inner Door Belts (Weather Strip)
- 2 Bailey Channel (Glass Runner)
- 2 Front 1/4 Window Seals - Fixed
- 2 Rear 1/4 Window Seals
Fixed OR Opening PLEASE ADVISE

- 1 Boot Seal

Escort Mk1 - Panel Van \$1064.00

Contents

- 1 Front Windscreen Rubber
- 1 Windscreen Locking Strip
- 2 Door Seals
- 2 Outer Door Belts (Weather Strip)
- 2 Inner Door Belts (Weather Strip)
- 2 Bailey Channel (Glass Runner)
- 2 Front 1/4 Window Seals
- 1 Rear Barn Door Seal Kit (Kit Does Both Doors) MOULDED
- 2 Rear Barn Door Window Seals

Our Rubber Kits can be purchased as complete Kits, or we can customise a kit with only the parts you require.

Please inquire / advise at time of ordering

Confused by the different rubber seals ?

[See here for details](#)

Escort Mk2 - 2 Door WITH Inner Door Belts \$1230.00
Escort Mk2 - 2 Door NO Inner Door Belts \$1155.00

Contents

- 1 Front Windscreen Seal
- 1 Rear Windscreen Seal
- 2 Windscreen Locking Strips
- 2 Door Seals
- 2 Outer Door Belts (Weather Strip)
- 2 Inner Door Belts (Weather Strip) ****NOTE**
- 2 Bailey Channel (Glass Runner)
- 2 Front ¼ Window Seals
- 2 Rear 1/4 Window Seals
- 1 Boot Seal

Escort Mk2 - 2 Door RS2000 \$1115.00

Contents

- 1 Front Windscreen Seal - Solid Rubber
- 1 Rear Windscreen Seal - Solid Rubber
- 2 Door Seals
- 2 Outer Door Belts (Weather Strip)
- N/A Inner Door Belts (Weather Strip)
- 2 Bailey Channel (Glass Runner)
- 2 Front 1/4 Window Seals
- 2 Rear 1/4 Window Seals
- 1 Boot Seal

Escort Mk2 - 4 Door WITH Inner Door Belts \$1260.00
Escort Mk2 - 4 Door NO Inner Door Belts \$1120.00

Contents

- 1 Front Windscreen Seal
- 1 Rear Windscreen Seal
- 2 Windscreen Locking Strips
- 4 Door Seals (Mitered / Moulded)
- 4 Outer Door Belts (Weather Strip)
- 4 Inner Door Belts (Weather Strip) ****NOTE**
- 4 Bailey Channel (Glass Runner)
- 2 Front ¼ Window Seals
- 1 Boot Seal

Escort Mk2 - 4 Door RS2000 \$1080

Contents

- 1 Front Windscreen Seal - Solid Rubber
- 1 Rear Windscreen Seal - Solid Rubber
- 4 Door Seals (Mitered / Moulded)
- 4 Outer Door Belts (Weather Strip)
- N/A Inner Door Belts (Weather Strip)
- 4 Bailey Channel (Glass Runner)
- 2 Front ¼ Window Seal
- 1 Boot Seal

Escort Mk2 - Panel Van \$1064.00

Contents

- 1 Front Windscreen Rubber
- 1 Windscreen Locking Strip
- 2 Door Seals
- 2 Outer Door Belts (Weather Strip)
- 2 Inner Door Belts (Weather Strip)
- 2 Bailey Channel (Glass Runner)
- 2 Front 1/4 Window Seals
- 1 Rear Barn Door Seal Kit (Kit Does Both Doors) MOULDED
- 2 Rear Barn Door Window Seals

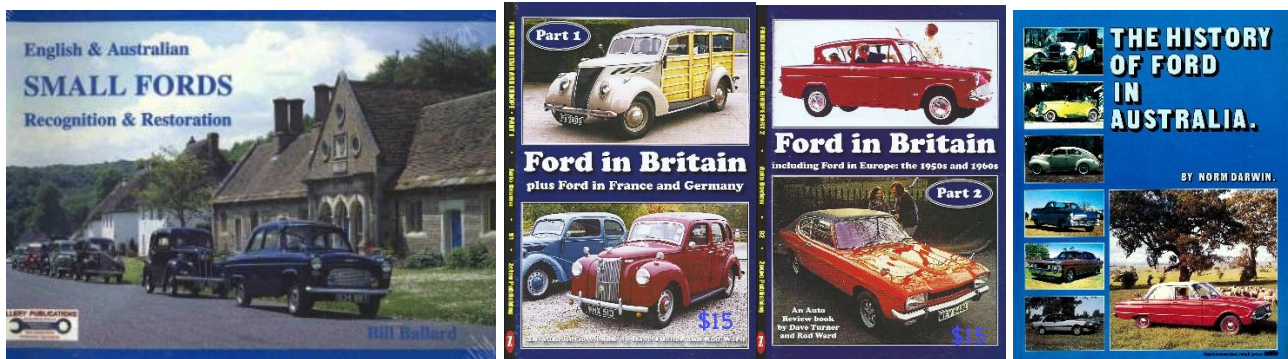
****NOTE : Mk2 Escort - The Inner Door Belts** we can supply only fit the standard model where the inside door trim finishes a couple of inches below the window ledge. They **DO NOT fit the RS2000 or Ghia models**, where the inside door trim goes to the window ledge

Our Rubber Kits can be purchased as complete Kits, or we can customise a kit with only the parts you require.

Please inquire / advise at time of ordering

Books

Book - English & Australian Small Fords Recognition & Restoration By Bill Ballard	each	\$25.00
Book – Ford Popular and the Small Side Valves / By Dave Turner	each	\$55.00
Book - Part 1 : Ford in Britain, : Plus Ford in France and Germany	each	\$15.00
Book - Part 2 : Ford in Britain : Including Ford in Europe in the 1950s and 1960s	each	\$15.00
Book - Part 3 : Ford in Britain : Plus Ford in Europe	each	\$15.00
Book – The History of Ford in Australia / By Norm Darwin	each	\$45.00



Workshop Manuals

Our stock of 2nd hand workshop manuals changes regularly. Please inquire about our current stock available

Escort Mk1	Scientific Publications - USED	\$35.00
Escort Mk1 75-76	Genuine Ford - USED	\$75.00
Escort Mk2 75-76	Scientific Publications - USED	\$35.00
Escort Mk2 77-81	Gregorys – NEW	\$110.00