

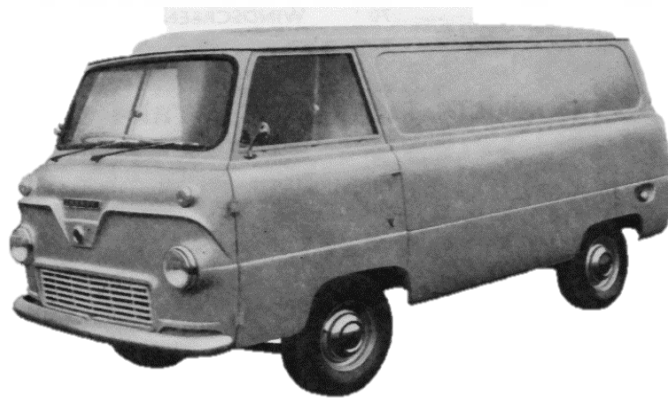
# FORD THAMES 800 (400E)

## New Parts Price List



### English Small Ford Specialist

Anglia - Capri - Cortina - Escort - Prefect - Thames - Zephyr



This catalogue supersedes all lists prior to **29 January 2026**  
*The most up to date version of this catalogue is on our web site*

**[www.yesterford.com](http://www.yesterford.com)**

*Some parts in this catalogue are imported from overseas, and prices may change due to the fluctuating currency exchange rate and changing supplier & freight costs.*

*If you are emailing an inquiry, please include :*

**Your details** : Name, Phone Number & Postcode (& Country if outside Australia) for delivery.

**Vehicle details** relevant to inquiry : Model, Year, Engine Size, Body Type (eg. 2 door, 4 door, Ute), Transmission, etc

1/21 Burgess Road  
Bayswater North  
VICTORIA 3153  
AUSTRALIA  
Ph: 03 9761 4714  
International Ph: +61 3 9761 4714  
Email: [sales@yesterford.com](mailto:sales@yesterford.com)

#### Opening Hours

Monday – Friday : 9am – 4pm

Saturday : By appointment

Sunday & Public Holidays : CLOSED

# Engine Gaskets & Seals

| Part Description              | Unit | \$       |
|-------------------------------|------|----------|
| Gasket Set - Full Engine      | each | \$220.00 |
| Gasket Set - Top Engine (VRS) | each | \$145.00 |
| Gasket Set - Bottom Engine    | each | \$75.00  |
| Gasket - Head                 | each | \$65.00  |
| Gasket - Inlet Manifold       | set  | \$5.00   |
| Gasket - Sump                 | each | \$16.00  |
| Gasket - Side Plate           | each | \$12.00  |
| Gasket - Rocker Cover         | each | \$12.00  |
| Gasket -Timing Cover          | each | \$10.00  |
| Gasket -Thermostat Housing    | each | \$4.00   |
| Gasket - Water Pump           | each | \$5.00   |
| Gasket - Fuel Pump            | each | \$3.00   |
| Seal - Rear Main Set          | each | \$30.00  |
| Seal - Front                  | each | \$15.00  |
| Seal - Valve Stem             | set  | \$30.00  |
| Welsh Plug - Brass 1 5/8"     | each | \$4.00   |
| Sump Plug Washer              | each | \$2.00   |

# Engine Components & Accessories

| Part Description  | Unit | \$       |
|---|------|----------|
| Piston & Ring Assembly - All Sizes - <i>Available in 3 or 4 Ring Type</i> | each | \$195.00 |
| Piston Rings  | set  | \$150.00 |
| Crankshaft Thrust Washers   | set  | \$35.00  |
| Bearings - Main   | set  | \$145.00 |
| Bearings – Conrod   | set  | \$150.00 |
| Bearings - Camshaft   | set  | \$70.00  |
| Bush - Small End  | each | \$15.00  |

|   |      |          |
|---|------|----------|
| Valves - Inlet - 204E Engine **                 | each | \$35.00  |
| Valves - Inlet - .015 O/S Stem - 204E Engine ** | each | \$15.00  |
| Valves - Exhaust - 204E Engine **               | each | \$35.00  |
| Valves - Inlet - 211E Engine **                 | each | \$35.00  |
| Valves - Exhaust - 211E Engine **               | each | \$35.00  |
| Valve Springs                                   | each | \$15.00  |
| Camshaft  | each | \$495.00 |
| Camshaft Sprocket                               | each | \$195.00 |
| Camshaft Followers                              | each | \$19.50  |
| Camshaft Gear Lock Tab                          | each | \$6.00   |
| Camshaft Thrust Plate Lock Tab                  | each | \$6.00   |
| Camshaft Block Plug                             | each | \$18.50  |
| Crankshaft Sprocket                             | each | \$135.00 |
| Timing Chain                                    | each | \$35.00  |
| Ring Gear – Flywheel – 204E Motor               | each | \$195.00 |
| Ring Gear – Flywheel – 211E Motor               | each | \$125.00 |
| Flywheel Lock Tab Plate                         | each | \$15.00  |
| Oil Pressure Switch                             | each | \$12.00  |
| Fuel Pump - Repair Kit                          | each | \$95.00  |
| Fuel Pump Blanking Plate                        | each | \$25.00  |
| Gasket - Fuel Pump                              | each | \$2.00   |
| Vacuum Pump - Repair Kit                        | each | \$110.00 |
| Sump Plug (includes washer)                     | each | \$18.00  |
| Engine Mount - Front                            | each | \$65.00  |
| Exhaust Manifold                                | each | \$250.00 |

**\*\* Please measure and confirm head size of valves when ordering.**

Originally, measurements are as follow:

Early models 204E Engine - Inlet Valves 36.5mm, Exhaust Valves 30mm

Late models 211E Engine - Inlet Valves 39.7mm. Exhaust Valves 34.5mm

# Tune Up & Service

| Part Description   | Unit | \$       |
|--|------|----------|
| Spark Plugs  | set  | \$24.00  |
| Contact Points   | each | \$12.00  |
| Rotor Button   | each | \$12.00  |
| Condenser  | each | \$12.00  |
| Distributor Cap  | each | \$45.00  |
| Distributor – Points Type  | each | \$145.00 |
| Electronic Ignition Kit - Positive Earth                                   | each | \$95.00  |
| Electronic Ignition Kit - Negative Earth                                   | each | \$95.00  |
| Universal Spark Plug Lead Kit **   | each | \$45.00  |
| Ignition Coil **   | each | \$65.00  |
| Filter - Oil   | each | \$19.50  |
| Filter – Oil (Z89A – Spin On Filter – Suits Kit below)                     | each | \$10.00  |
| Oil Filter Kit – to convert to a spin on Filter, includes the Z89A Filter. | each | \$245.00 |
| Filter – Fuel - Plastic  | each | \$6.00   |
| Filter – Fuel - Metal  | each | \$18.50  |
| Carburetor Overhaul Kit  | each | \$95.00  |
| Wiper Blade Assembly - Stainless Steel                                     | each | \$35.00  |
| Wiper Arm  | each | \$55.00  |

**\*\* NOTE :** Some coils have “screw in” lead type & some have “push in” lead type. Please advise when ordering coils and lead what type you require.

## Fuel Pumps

|   |        |          |
|---|--------|----------|
| Fuel & Vacuum Pump (includes gasket) *Reconditioned / Change Over | C/O(3) | \$295.00 |
| Fuel Pump - Repair Kit  | each   | \$110.00 |
| Gasket - Fuel Pump  | each   | \$3.00   |
| Vacuum Pump - Repair Kit  | each   | \$110.00 |
| Flexible Fuel Line  | each   | \$45.00  |

# Starter Motor / Generator

| Part Description                           | Unit   | \$       |
|--|--------|----------|
| Starter Motor *Reconditioned / Change Over | C/O(3) | \$295.00 |
| Starter Motor Brush Set                    | set    | \$20.00  |
| Pinion - Starter Motor                     | each   | \$65.00  |
| Starter Switch                             | each   | \$65.00  |
| Generator *Reconditioned / Change Over     | C/O(3) | \$275.00 |
| Generator - New                            | each   | \$450.00 |
| Generator Regulator - New                  | each   | \$195.00 |
| Generator Brush Set                        | set    | \$15.00  |
| Generator Rear Bush                        | each   | \$10.00  |
| Dynamator C39/C40 Negative Earth ***       | each   | \$495.00 |

\*\* The Dynamator is an alternator in the same shape as the original generator. The vehicle MUST be NEGATIVE earth. It will fit onto the original brackets. Use and fit the old generator pulley to the unit and modify the wiring as per instructions included with dynamator.

## Exhaust

| Part Description              | Unit | \$       |
|-------------------------------|------|----------|
| Exhaust Manifold              | each | \$250.00 |
| Exhaust Manifold To Pipe Ring | each | \$30.00  |

### \*Reconditioned / Change Over

Items available as \*Reconditioned / Change Over require a change over unit from the customer.

A deposit will be charged for all Change Over units when core units are not supplied at the time of purchase.

All deposits are refunded when the change over unit is received from the customer (we appreciate prompt return of change over units).

Deposit required : C/O(2) = \$30.00, C/O(3) = \$50.00, C/O(4) = \$100.00

# Cooling System

| Part Description  | Unit   | \$       |
|---|--------|----------|
| Water Pump (includes gasket) *Reconditioned / Change Over | C/O(3) | \$175.00 |
| Water Pump - Repair Kit                                   | each   | \$125.00 |
| Gasket - Water Pump                                       | each   | \$5.00   |
| Thermostat  | each   | \$15.00  |
| Gasket - Thermostat Housing                               | each   | \$2.00   |
| Radiator Hose - Top                                       | each   | \$25.00  |
| Radiator Hose - Bottom                                    | each   | \$45.00  |
| Radiator Cap  | each   | \$12.00  |
| Fan Belt  | each   | \$12.00  |
| Bypass Tube Kit   | each   | \$25.00  |

# Transmission

| Part Description                               | Unit | \$       |
|--|------|----------|
| Gearbox Small Parts Kit - 3 Speed **           | each | \$310.00 |
| Gearbox Small Parts Kit - 4 Speed **           | each | \$385.00 |
| Second Gear - 3 Speed                          | each | \$150.00 |
| <u>Bearing - Front - 3 Speed</u>               | each | \$45.00  |
| <u>Bearing - Front - 4 Speed</u>               | each | \$45.00  |
| <u>Bearing - Rear - 3 Speed</u>                | each | \$45.00  |
| <u>Bearing - Rear - 4 Speed</u>                | each | \$75.00  |
| <u>Bearing - Main Shaft Pilot - 3 Speed</u>    | each | \$30.00  |
| <u>Bearing - Main Shaft Pilot - 4 Speed</u>    | each | \$110.00 |
| <u>Layshaft - 3 Speed</u>                      | each | \$65.00  |
| <u>Layshaft - 4 Speed</u> _NOT AVAILABLE       | each | —        |
| <u>Layshaft Rollers - 3 Speed</u>              | set  | \$65.00  |
| <u>Layshaft Rollers - 4 Speed</u>              | set  | \$70.00  |
| Layshaft Thrust Washer - Front - 4 Speed       | each | \$25.00  |
| Layshaft Thrust Washer - Front - 3 Speed (set) | set  | \$75.00  |

|  |      |          |
|--|------|----------|
| <u>Gasket Kit - 3 Speed</u>  | each | \$25.00  |
| <u>Gasket Kit - 4 Speed</u>  | each | \$25.00  |
| <u>Seal - Front Input - 4 Speed</u>  | each | \$15.00  |
| <u>Seal - Ex/Housing</u>   | each | \$15.00  |
| <u>Seal - Selector Shaft</u>   | each | \$10.00  |
| Syncro Rings - 3 Speed   | each | \$42.00  |
| Syncro Rings - 4 Speed   | each | \$75.00  |
| Syncro Hub Assembly – 3 speed  | each | \$195.00 |
| Syncro Hub Blocker Bar – 3 speed   | each | \$8.00   |
| Syncro Hub Blocker Bar Spring – 3 speed  | each | \$8.00   |
| First & Reverse Sliding Gear – 3 Speed   | each | \$125.00 |
| Second Gear – 3 Speed  | each | \$145.00 |
| Cluster Gear – With Teeth = 34-28-19-14 (3 Speed Only)   | each | \$275.00 |
| Cluster Gear – With Teeth = 35-28-17-14 (3 Speed Only)<br><i>Gives a lower 1<sup>st</sup> gear ratio</i> | each | \$225.00 |
| Mount - Gearbox  | each | \$45.00  |
| Speedo Cable - 3 Speed   | each | \$65.00  |
| Speedo Cable - 4 Speed   | each | \$65.00  |
| Universal Joint -Tail Shaft  | each | \$35.00  |

**\*\* Parts underlined are included in the small parts kit**

### **\*Reconditioned / Change Over**

Items available as **\*Reconditioned / Change Over** require a change over unit from the customer.

A deposit will be charged for all Change Over units when core units are not supplied at the time of purchase.

All deposits are refunded when the change over unit is received from the customer (we appreciate prompt return of change over units).

Deposit required : C/O(2) = \$30.00, C/O(3) = \$50.00, C/O(4) = \$100.00

# Brake

| Part Description   | Unit   | \$       |
|--|--------|----------|
| Brake Shoes - Front (set of 4 shoes) <i>*Reconditioned / Change Over</i>   | C/O(2) | \$95.00  |
| Brake Shoes - Rear (Early & Late Type) (set of 4 shoes)<br><i>*Reconditioned / Change Over</i>                       | C/O(2) | \$95.00  |
| Wheel Cylinder - Front   | each   | \$75.00  |
| Wheel Cylinder - Front Repair Kit  | each   | \$15.00  |
| Wheel Cylinder - Rear - to 11/1962   | each   | \$75.00  |
| Wheel Cylinder - Rear - from 11/1962   | each   | \$145.00 |
| Wheel Cylinder - Rear Repair Kit .<br><i>Please advise if <b>Single</b> Piston Type OR <b>Twin</b> Piston Type</i>   | each   | \$19.50  |
| Dust Boot – Brake Wheel Cylinder – Hand Brake Lever<br>Pre 11/62 / EARLY Type <i>**Photo Below</i>                   | pair   | \$30.00  |
| Dust Boot – Brake Wheel Cylinder – Hand Brake Lever<br>Post 11/62 / LATE Type <i>**Photo Below</i>                   | pair   | \$40.00  |
| Dust Boot – Brake Wheel Cylinder – Hand Brake Lever RETAINING<br>PLATE - Post 11/62 / LATE Type <i>**Photo Below</i> | pair   | \$40.00  |
| Brake Master Cylinder - Repair Kit (Check Size .7 or 3/4")   | each   | \$25.00  |
| Brake / Clutch Fluid Reservoir Cap   | each   | \$20.00  |
| Brake Pedal Pad - Manual   | each   | \$10.00  |
| Brake Hose - Front   | each   | \$45.00  |
| Brake Hose - Rear  | each   | \$45.00  |
| Hand Brake Cable - Rear  | each   | \$175.00 |
| Brake Stop Light Switch  | each   | \$29.50  |

**\*\*Please refer to these photos and advise which dust boot you require:**



**Retaining Plate:**





# Clutch

| Part Description   | Unit   | \$       |
|--|--------|----------|
| Clutch Pressure Plate *Reconditioned / Change Over                                   | C/O(3) | \$195.00 |
| Clutch Driven Plate - 3 Speed *Reconditioned / Change Over                           | C/O(3) | \$275.00 |
| Clutch Driven Plate - 4 Speed  | each   | \$165.00 |
| Clutch Release Bearing   | each   | \$95.00  |
| Clutch Master Cylinder - Repair Kit (Check Size .7 or 3/4")                          | each   | \$25.00  |
| Clutch Slave Cylinder – 3 speed – to 11/1962 - NEW                                   | each   | \$175.00 |
| Clutch Slave Cylinder – 4 speed – from 11/1962 on ^^<br>*Reconditioned / Change Over | C/O(2) | \$175.00 |
| Clutch Slave Cylinder - Repair Kit (Check Size 7/8" or 1")                           | each   | \$19.50  |
| Clutch Slave Cylinder - Circlip  | each   | \$3.00   |
| Clutch Pedal Pad   | each   | \$10.00  |
| Clutch Flexible Hose   | each   | \$45.00  |
| Bearing - Crankshaft Spigot  | each   | \$12.00  |

^^ Customer is required to supply their old/existing Slave Cylinder first

## Suspension & Steering Front

| Part Description            | Unit | \$       |
|-----------------------------|------|----------|
| Bush - Idler Arm            | each | \$95.00  |
| Tie Rod End - Outer         | each | \$65.00  |
| Tie Rod End - Inner         | each | \$65.00  |
| Tie Rod End - Boot          | each | \$9.00   |
| Drag Link Ends - 3/60 on    | each | \$110.00 |
| Bush - Steering Relay Lever | kit  | \$65.00  |
| Ball Joint - Upper          | each | \$150.00 |
| Ball Joint - Lower          | each | \$125.00 |
| Steering Box Seal           | each | \$15.00  |

## Suspension Rear End

| Part Description                     | Unit | \$      |
|--------------------------------------|------|---------|
| Rear Shocker Link                    | each | \$65.00 |
| Bush - Rear Spring - Front Eye       | each | \$35.00 |
| Bush - Rear Shackle - Lower - Rubber | each | \$6.00  |
| Bush - Rear Shackle - Upper - Rubber | each | \$6.00  |

## Front & Rear Axle

| Part Description                  | Unit | \$       |
|-----------------------------------|------|----------|
| Wheel Bearings - Front - Per Side | kit  | \$75.00  |
| Wheel Bearings - Rear             | each | \$45.00  |
| Seal - Front Hub ***              | each | \$18.00  |
| Seal - Rear Hub                   | each | \$25.00  |
| Hub Nut Lock Washer - Rear        | each | \$8.00   |
| Rear Hub Nut                      | each | \$35.00  |
| Hub to Axle Gasket - Rear         | each | \$5.00   |
| Gasket - Diff Centre              | each | \$10.00  |
| Seal - Diff Pinion                | each | \$55.00  |
| Diff Bearing Set                  | set  | \$295.00 |
| Wheel Nuts – STD (Set of 5)       | set  | \$35.00  |

\*\*\* **PLEASE NOTE** : There are 3 different diameter seals used for this type of vehicle.  
Please advise what size seal you require.  
Sizes are : 1.560, 1.625 or 1.750

# Miscellaneous

| Part Description  | Unit           | \$      |
|---|----------------|---------|
| Penrite Brake Fluid   | 500 ml         | \$15.00 |
| Penrite Gear Oil 80-90  | 1 litre        | \$13.00 |
| Penrite Gear Oil 80-90  | 2.5 litre      | \$25.00 |
| Penrite Shocker Oil No 1 ( for piston type shockers)  | 500 ml         | \$15.00 |
| Penrite Shocker Oil No 2 ( for lever arm type shockers)   | 500 ml         | \$15.00 |
| Penrite Steering Box Lube   | 450 G          | \$15.00 |
| Engine Oil - HPR 30   | 5 litre        | \$65.00 |
| Penrite Classic Light – 20W-60 (ideal for older cars)   | 5 litre        | \$75.00 |
| Tectaloy Radiator Treatment   | 500 ml         | \$12.00 |
| Permatex Gasket Cement  | 50 ml          | \$9.50  |
| VHT Engine Enamel - Gloss Black   | 312g<br>(11oz) | \$15.00 |
| Original Ford Green Brush On Paint  | 500ml          | \$75.00 |
| High Temperature Copper Gasket Cement Spray<br>(For Cork, paper & Metal Gaskets. Good for Head Gaskets) | 340 G          | \$18.00 |
| Book - English & Australian Small Fords Recognition & Restoration<br>By Bill Billard                    | each           | \$25.00 |
| Book – Ford Popular and the Small Side Valves / By Dave Turner  | each           | \$55.00 |
| Book - Part 1 : Ford in Britain, : Plus Ford in France and Germany                                      | each           | \$15.00 |
| Book - Part 2 : Ford in Britain : Including Ford in Europe in the 1950s and 1960s                       | each           | \$15.00 |
| Book - Part 3 : Ford in Britain : Plus Ford in Europe   | each           | \$15.00 |