

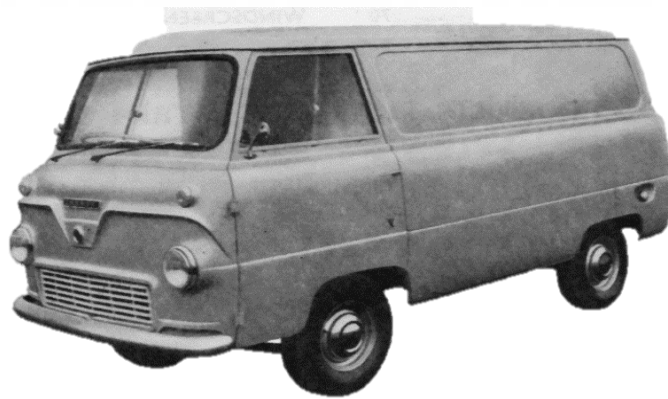
# FORD THAMES 800 (400E)

## New Parts Price List



### English Small Ford Specialist

Anglia - Capri - Cortina - Escort - Prefect - Thames - Zephyr



This catalogue supersedes all lists prior to **6 March 2023**

*The most up to date version of this catalogue is on our web site*

[www.yesterford.com](http://www.yesterford.com)

*While every effort is made to keep our price lists up to date, from time to time if availability or overseas exchange rates change, our prices may unexpectedly change*

1/21 Burgess Road  
Bayswater North  
VICTORIA 3153  
AUSTRALIA  
Ph: 03 9761 4714  
International Ph: +61 3 9761 4714  
Email: [sales@yesterford.com](mailto:sales@yesterford.com)

#### Opening Hours

Monday – Thursday : 9am – 5pm  
Friday : 9am – 4:30pm  
Saturday : By appointment  
Sunday & Public Holidays : CLOSED

# Engine Gaskets & Seals

<b>Part Description</b>	<b>Unit</b>	<b>\$</b>
Gasket Set - Full Engine	each	\$220.00
Gasket Set - Top Engine (VRS)	each	\$145.00
Gasket Set - Bottom Engine	each	\$75.00
Gasket - Head	each	\$65.00
Gasket - Inlet Manifold	set	\$5.00
Gasket - Sump	each	\$16.00
Gasket - Side Plate	each	\$12.00
Gasket - Rocker Cover	each	\$12.00
Gasket -Timing Cover	each	\$10.00
Gasket -Thermostat Housing	each	\$4.00
Gasket - Water Pump	each	\$5.00
Gasket - Fuel Pump	each	\$3.00
Seal - Rear Main Set	each	\$30.00
Seal - Front	each	\$15.00
Seal - Valve Stem	set	\$30.00
Welsh Plug - Brass 1 5/8"	each	\$3.00
Sump Plug Washer	each	\$2.00

# Engine Components & Accessories

<b>Part Description</b>	<b>Unit</b>	<b>\$</b>
Piston & Ring Assembly - All Sizes - <i>Available in 3 or 4 Ring Type</i>	each	\$160.00
Piston Rings	set	\$95.00
Crankshaft Thrust Washers	set	\$35.00
Bearings - Main	set	\$145.00
Bearings – Conrod	set	\$150.00
Bearings - Camshaft	set	\$70.00
Bush - Small End	each	\$15.00

Valves - Inlet - 204E Engine **	each	\$35.00
Valves - Inlet - .015 O/S Stem - 204E Engine **	each	\$15.00
Valves - Exhaust - 204E Engine **	each	\$35.00
Valves - Inlet - 211E Engine **	each	\$35.00
Valves - Exhaust - 211E Engine **	each	\$35.00
Valve Springs	each	\$10.00
Camshaft	each	\$495.00
Camshaft Sprocket	each	\$145.00
Camshaft Followers	each	\$19.50
Camshaft Gear Lock Tab	each	\$6.00
Camshaft Thrust Plate Lock Tab	each	\$6.00
Crankshaft Sprocket	each	\$65.00
Timing Chain	each	\$35.00
Ring Gear - Flywheel	each	\$125.00
Flywheel Lock Tab Plate	each	\$15.00
Oil Pressure Switch	each	\$12.00
Fuel Pump - Repair Kit	each	\$95.00
Fuel Pump Blanking Plate	each	\$25.00
Gasket - Fuel Pump	each	\$2.00
Vacuum Pump - Repair Kit	each	\$110.00
Sump Plug (includes washer)	each	\$15.00
Engine Mount - Front	each	\$65.00
Exhaust Manifold	each	\$250.00
Starter Motor - Reconditioned	C/O(3)	\$125.00
Pinion - Starter Motor	each	\$65.00
Starter Solenoid <a href="#">PHOTO</a>	each	\$75.00
Generator - Reconditioned	C/O(3)	\$125.00
Generator - New	each	\$195.00
Generator Regulator - Reconditioned	C/O(2)	\$125.00

**\*\* Please measure and confirm head size of valves when ordering.**

Originally, measurements are as follow:

Early models 204E Engine - Inlet Valves 36.5mm, Exhaust Valves 30mm

Late models 211E Engine - Inlet Valves 39.7mm. Exhaust Valves 34.5mm

# Tune Up & Service

Part Description	Unit	\$
Spark Plugs	set	\$24.00
Contact Points	each	\$12.00
Rotor Button	each	\$12.00
Condenser	each	\$12.00
Distributor Cap	each	\$45.00
Distributor – Points Type	each	\$145.00
Electronic Ignition Kit - Positive Earth	each	\$95.00
Electronic Ignition Kit - Negative Earth	each	\$95.00
Universal Spark Plug Lead Kit **	each	\$45.00
Ignition Coil **	each	\$55.00
Filter - Oil	each	\$19.50
Filter – Oil (Z89A – Spin On Filter – Suits Kit below)	each	\$10.00
Oil Filter Kit – to convert to a spin on Filter, includes the Z89A Filter.	each	\$175.00
Filter - Fuel	each	\$6.00
Carburetor Overhaul Kit	each	\$75.00

**\*\* NOTE :** Some coils have “screw in” lead type & some have “push in” lead type. Please advise when ordering coils and lead what type you require.

## Fuel Pumps

Fuel & Vacuum Pump - Reconditioned	C/O(3)	\$295.00
Fuel Pump - Repair Kit	each	\$110.00
Gasket - Fuel Pump	each	\$3.00
Vacuum Pump - Repair Kit	each	\$110.00
Flexible Fuel Line	each	\$45.00

## Exhaust

Part Description	Unit	\$
Exhaust Manifold	each	\$250.00
Exhaust Manifold To Pipe Ring	each	\$30.00

# Cooling System

<b>Part Description</b>	<b>Unit</b>	<b>\$</b>
Water Pump – New (includes gasket)	each	\$375.00
Water Pump – Reconditioned (includes gasket)	C/O(3)	\$175.00
Water Pump - Repair Kit	each	\$125.00
Gasket - Water Pump	each	\$5.00
Thermostat	each	\$15.00
Gasket - Thermostat Housing	each	\$2.00
Radiator Hose - Top	each	\$25.00
Radiator Hose - Bottom	each	\$45.00
Radiator Cap	each	\$12.00
Fan Belt	each	\$12.00
Bypass Tube Kit	each	\$25.00

# Transmission

<b>Part Description</b>	<b>Unit</b>	<b>\$</b>
Gearbox Small Parts Kit - 3 Speed **	each	\$310.00
Gearbox Small Parts Kit - 4 Speed **	each	\$395.00
Second Gear - 3 Speed	each	\$150.00
<u>Bearing - Front - 3 Speed</u>	each	\$45.00
<u>Bearing - Front - 4 Speed</u>	each	\$45.00
<u>Bearing - Rear - 3 Speed</u>	each	\$45.00
<u>Bearing - Rear - 4 Speed</u>	each	\$75.00
<u>Bearing - Main Shaft Pilot - 3 Speed</u>	each	\$30.00
<u>Bearing - Main Shaft Pilot - 4 Speed</u>	each	\$110.00

Syncro Rings - 3 Speed	each	\$42.00
Syncro Rings - 4 Speed	each	\$75.00
Syncro Hub Assembly – 3 speed	each	\$195.00
Syncro Hub Blocker Bar – 3 speed	each	\$8.00
Syncro Hub Blocker Bar Spring – 3 speed	each	\$8.00
First & Reverse Sliding Gear – 3 Speed	each	\$125.00
Second Gear – 3 Speed	each	\$145.00
<u>Layshaft - 3 Speed</u>	each	\$65.00
<u>Layshaft - 4 Speed</u> _NOT AVAILABLE	each	—
<u>Layshaft Rollers - 3 Speed</u>	set	\$55.00
<u>Layshaft Rollers - 4 Speed</u>	set	\$55.00
<u>Layshaft Thrust Washer - Front - 4 Speed</u>	each	\$25.00
<u>Gasket Kit - 3 Speed</u>	each	\$25.00
<u>Gasket Kit - 4 Speed</u>	each	\$25.00
<u>Seal - Front Input - 4 Speed</u>	each	\$15.00
<u>Seal - Ex/Housing</u>	each	\$15.00
<u>Seal - Selector Shaft</u>	each	\$10.00
Bush - Selector Linkage	each	\$10.00
Cluster Gear – With Teeth = 34-28-19-14 (3 Speed Only)	each	\$275.00
Cluster Gear – With Teeth = 35-28-17-14 (3 Speed Only)	each	\$225.00
<i>Gives a lower 1<sup>st</sup> gear ratio</i>		
Mount - Gearbox	each	\$45.00
Speedo Cable - 3 Speed	each	\$55.00
Speedo Cable - 4 Speed	each	\$65.00
Universal Joint -Tail Shaft	each	\$35.00

**\*\* Parts underlined are included in the small parts kit**

### **Change Over Core Deposits**

Items requiring a change over unit are displayed as C/O(2), C/O(3) or C/O(4)

A deposit will be charged for all Change Over units when core units are not supplied at the time of purchase.

All deposits are refunded when the change over unit is received from the customer (if returned within 30 days).

Deposit required :

Change Over (2) = C/O(2) = \$30.00, Change Over (3) = C/O(3) = \$50.00, Change Over (4) = C/O(4) = \$100.00

# Brake

<b>Part Description</b>	<b>Unit</b>	<b>\$</b>
Brake Shoes - Front	C/O(2)	\$75.00
Brake Shoes - Rear (Early & Late Type)	C/O(2)	\$65.00
Wheel Cylinder - Front	each	\$75.00
Wheel Cylinder - Front Repair Kit	each	\$15.00
Wheel Cylinder - Rear - to 11/1962	each	\$75.00
Wheel Cylinder - Rear - from 11/1962	each	\$145.00
Wheel Cylinder - Rear Repair Kit (Single Piston Type)	each	\$15.00
Wheel Cylinder - Rear Repair Kit (Twin Piston Type)	each	\$19.50
Brake Master Cylinder - Repair Kit (Check Size .7 or 3/4")	each	\$25.00
Brake / Clutch Fluid Reservoir Cap	each	\$20.00
Brake Pedal Pad - Manual	each	\$10.00
Brake Hose - Front	each	\$45.00
Brake Hose - Rear	each	\$45.00
Hand Brake Cable - Rear	each	\$175.00
Brake Stop Light Switch	each	\$29.50

When ordering, it is most helpful when you quote

- Vehicle Model (eg Escort MkI, Zephyr MkII)
- Vehicle Year (and even the month) of manufacture
- Engine Size
- Transmission Type (Manual or Automatic)
- Body Type (eg. 2 door, 4 door, ute, panel van)
- Any relevant modifications

Supplying all of this information will assist us to identify the correct part for your model car.

# Clutch

Part Description	Unit	\$
Clutch Pressure Plate	C/O(3)	\$195.00
Clutch Driven Plate - 3 Speed	C/O(3)	\$175.00
Clutch Driven Plate - 4 Speed	each	\$115.00
Clutch Release Bearing	each	\$55.00
Clutch Master Cylinder - Repair Kit (Check Size .7 or 3/4")	each	\$25.00
Clutch Slave Cylinder – New – 3 speed – to 11/1962	each	\$175.00
Clutch Slave Cylinder – Reconditioned – 4 speed – from 11/1962 on ^^	C/O(2)	\$175.00
Clutch Slave Cylinder - Repair Kit (Check Size 7/8" or 1")	each	\$19.50
Clutch Slave Cylinder - Circlip	each	\$3.00
Clutch Pedal Pad	each	\$10.00
Clutch Flexible Hose	each	\$45.00
Bearing - Crankshaft Spigot	each	\$12.00

^^ Customer is required to supply their old/existing Slave Cylinder first

# Starter Motor & Generator

Part Description	Unit	\$
Starter Motor - Reconditioned	C/O(3)	\$225.00
Starter Motor Brush Set	set	\$20.00
Pinion - Starter Motor	each	\$55.00
Starter Switch	each	\$65.00
Generator - Reconditioned	C/O(3)	\$175.00
Generator - New	each	\$295.00
Generator Regulator - New	each	\$125.00
Generator Brush Set	set	\$15.00
Dynamator C39/C40 Negative Earth ***	each	\$375.00

\*\* The Dynamator is an alternator in the same shape as the original generator. The vehicle MUST be NEGATIVE earth. It will fit onto the original brackets. Use and fit the old generator pulley to the unit and modify the wiring as per instructions included with dynamator.



# Suspension & Steering Front

<b>Part Description</b>	<b>Unit</b>	<b>\$</b>
Bush - Steering Pivot	each	\$45.00
Bush - Idler Arm	each	\$65.00
Tie Rod End - Outer	each	\$65.00
Tie Rod End - Inner	each	\$65.00
Tie Rod End - Boot	each	\$9.00
Drag Link Ends - 3/60 on	each	\$110.00
Bush - Steering Relay Lever	kit	\$65.00
Ball Joint - Upper	each	\$150.00
Ball Joint - Lower	each	\$125.00
Steering Box Seal	each	\$15.00

# Suspension Rear End

<b>Part Description</b>	<b>Unit</b>	<b>\$</b>
Rear Shocker Link	each	\$65.00
Bush - Rear Spring - Front Eye	each	\$35.00
Bush - Rear Shackle - Lower - Rubber	each	\$6.00
Bush - Rear Shackle - Upper - Rubber	each	\$6.00

## **Change Over Core Deposits**

Items requiring a change over unit are displayed as C/O(2), C/O(3) or C/O(4)

A deposit will be charged for all Change Over units when core units are not supplied at the time of purchase.

All deposits are refunded when the change over unit is received from the customer (if returned within 30 days).

Deposit required :

Change Over (2) = C/O(2) = \$30.00, Change Over (3) = C/O(3) = \$50.00, Change Over (4) = C/O(4) = \$100.00

# Front & Rear Axle

Part Description	Unit	\$
Wheel Bearings - Front - Per Side	kit	\$75.00
Wheel Bearings - Rear	each	\$45.00
Seal - Front Hub ***	each	\$18.00
Seal - Rear Hub	each	\$25.00
Hub Nut Lock Washer - Rear	each	\$8.00
Rear Hub Nut	each	\$35.00
Hub to Axle Gasket - Rear	each	\$5.00
Gasket - Diff Centre	each	\$10.00
Seal - Diff Pinion	each	\$55.00
Diff Bearing Set	set	\$295.00

**\*\*\* PLEASE NOTE :** There are 3 different diameter seals used for this type of vehicle.  
Please advise what size seal you require.  
Sizes are : 1.560, 1.625 or 1.750

*If you do not see the part in this website, you are still welcome to contact us. Sometimes we are able to source other parts, or we may have a vehicle that we are currently wrecking.*

*Some parts in this catalogue are imported from overseas, and prices may change due to the fluctuating currency exchange rate and charges from suppliers.*

*Some parts in this catalogue are remanufactured either in Australia or overseas. Sometimes new items become available, sometimes current items are discontinued. Whilst we endeavour to keep the catalogue up to date with any stock and price changes, sometimes we are unaware of changes until we are in communication with our suppliers.*

Please see our website for our most current prices and availability  
[www.yesterford.com.au](http://www.yesterford.com.au)

# Body Parts

Part Description	Unit	\$
Hub Caps (set of 4)	Set 4	\$280.00

# Miscellaneous

Part Description	Unit	\$
Penrite Brake Fluid	500 ml	\$15.00
Penrite Gear Oil 80-90	1 litre	\$13.00
Penrite Gear Oil 80-90	2.5 litre	\$25.00
Penrite Shocker Oil No 1 ( for piston type shockers)	500 ml	\$15.00
Penrite Shocker Oil No 2 ( for lever arm type shockers)	500 ml	\$15.00
Penrite Steering Box Lube	450 G	\$15.00
Engine Oil - HPR 30	5 litre	\$65.00
Penrite Classic Light – 20W-60 (ideal for older cars)	5 litre	\$75.00
Tectaloy Radiator Treatment	500 ml	\$12.00
Permatex Gasket Cement	50 ml	\$9.50
VHT Engine Enamel - Gloss Black	312g (11oz)	\$15.00
High Temperature Copper Gasket Cement Spray <i>(For Cork, paper &amp; Metal Gaskets. Good for Head Gaskets)</i>	340 G	\$18.00
Book - English & Australian Small Fords Recognition & Restoration By Bill Billard	each	\$25.00
Book – Ford Popular and the Small Side Valves / By Dave Turner	each	\$55.00
Book - Part 1 : Ford in Britain, : Plus Ford in France and Germany	each	\$15.00
Book - Part 2 : Ford in Britain : Including Ford in Europe in the 1950s and 1960s	each	\$15.00
Book - Part 3 : Ford in Britain : Plus Ford in Europe	each	\$15.00
Book - The Big Fords : Consul, Zephyr, Zodiac, Marks I to IV	each	\$12.00